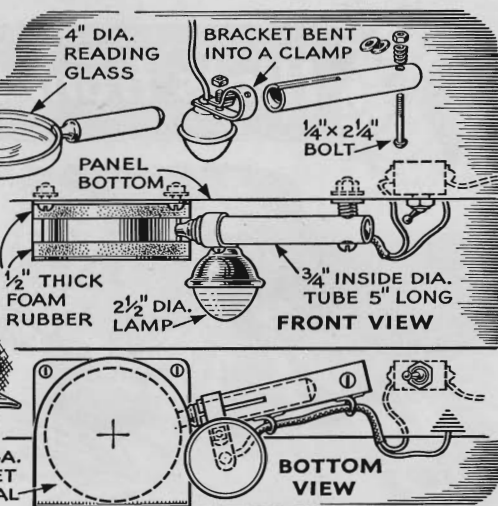
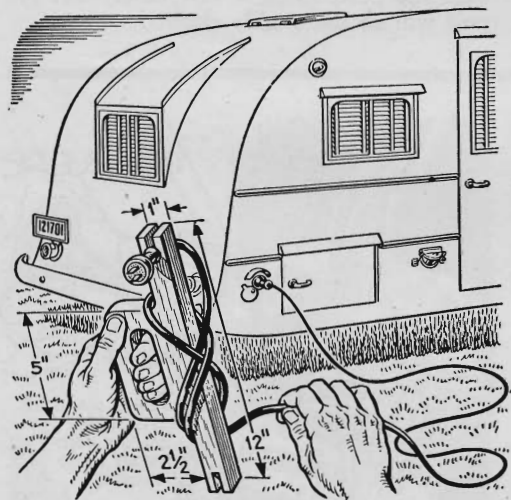


MORE Hints from the Model Garage

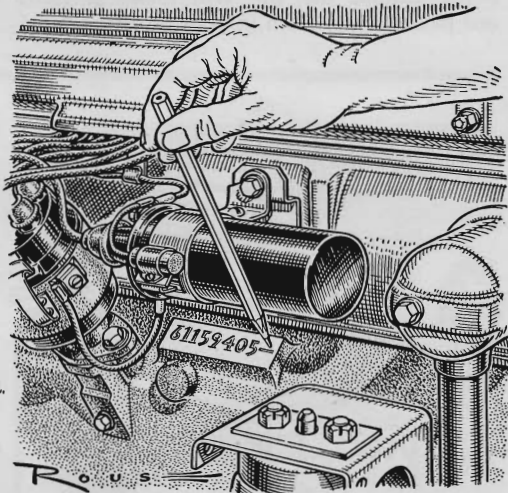


Glass Magnifies Map Details. A large reading glass mounted under the dash like this will help you see fine print on a highway map. Supported on a pivot, the glass swings into a pocket lined with foam rubber while not in use. This protects the lens

and keeps it clean. A truck clearance lamp clamped to the swinging arm throws light on the map. A lead can be run to the hot side of the ignition switch. For some cars you'll have to vary the setup to suit a different kind of instrument panel.



Reel Stores Extension Cord. House trailers are often equipped with 115-volt electric wiring circuits, but to bring current into the trailer a long and unwieldy extension cord is required. To simplify handling the cord, A. V. Malone, of Los Angeles, designed this carrier. Wind the cord as shown, each revolution forming a figure eight. The 1" slots at each end are for hooking the plugs to the carrier.



Did You Know This? A $\frac{1}{4}$ " dash stamped after an engine number means that all the cylinder bores were finished .010" oversize at the factory and are equipped with .010" oversize pistons and rings. You must take this into account in overhauling such an engine. Motor makers commonly finish all bores this much oversize if one is too large for finishing to nominal size. However, such engines are not considered special.