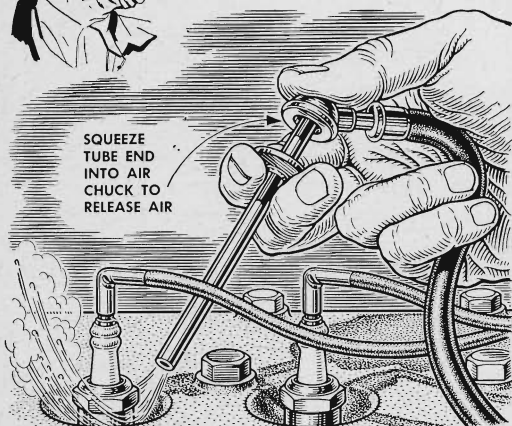
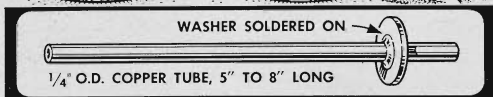




Hints from the Model Garage



SQUEEZE
TUBE END
INTO AIR
CHUCK TO
RELEASE AIR



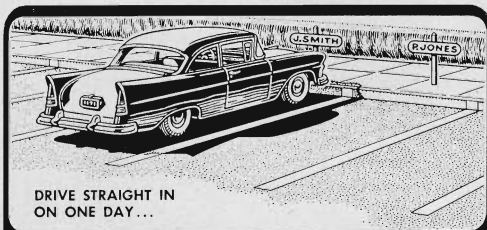
WASHER SOLDERED ON

1/4" O.D. COPPER TUBE, 5" TO 8" LONG

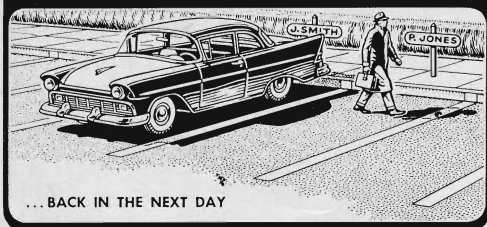
Use this blow gun to get dirt out of spark-plug recesses or to clean parts. It's inserted into a filling-station air-hose chuck, and, when pressed in, directs the blast of air where needed. A washer soldered to the tube serves as a trigger.



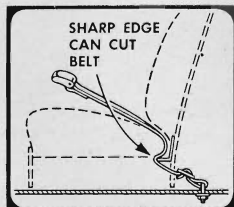
Stick reflective tape on the inside of a gas-cap cover that swings out. If you get stalled on the road at night, open the cover to warn cars approaching from the rear. If your cover doesn't open outward, stick tape on the edge of a door.



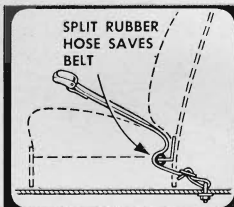
DRIVE STRAIGHT IN
ON ONE DAY...



...BACK IN THE NEXT DAY



SHARP EDGE
CAN CUT
BELT

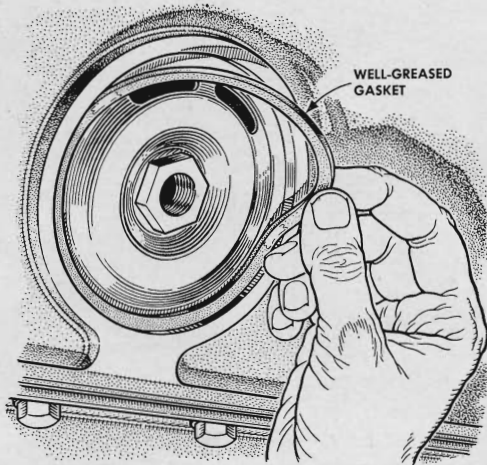


SPLIT RUBBER
HOSE SAVES
BELT



Keep the sun from fading one side of your car more than the other when you park in the same spot every day. By backing into the space every other day, you can equalize the fading, as both sides will receive the same exposure.

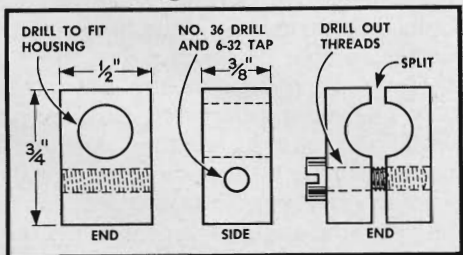
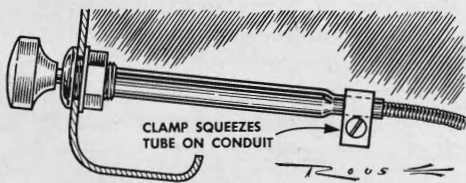
Protect safety belts from chafing on the sharp edge of a metal seat frame, or they may cut through under strain. Slit short lengths of heater hose and force them over the metal edge where the belts come through the seat.



Stick gaskets in place by applying a coat of clean grease to the side that joins the part being installed. The grease makes the gasket adhere, but does not affect the seal. This trick is especially good in places that are hard to reach.



An iron-on patch makes a neat repair over frayed upholstery. If the color can't be matched, cut a large patch from a harmonizing color to make a two-tone design. Back up the patch by stuffing crumpled newspaper into the spot.



A flexible cable that's pulled loose because of too much yanking can be repaired with a clamp made from a block of steel. Machine as shown and tighten it around the housing neck to squeeze the metal tight on the flexible section.

Do You Have an Auto Hint? Send It in and Win a Prize

HAVE you discovered or developed a money-saving short cut for making your own auto repairs? Have you found an easier way to do a difficult job? Got a tip that will make driving safer or easier? Or do you know someone who has?

POPULAR SCIENCE will pay a cash prize of \$15 for every auto-repair hint accepted for publication each month in Hints from the Model Garage.

Describe your hint as completely as you can in words. Add a pencil drawing, or shoot a photo, if you feel that this will make it more easily understood. Address your entry to Model Garage Editor, POPULAR SCIENCE MONTHLY, 353 Fourth Ave., New York 10, N. Y.