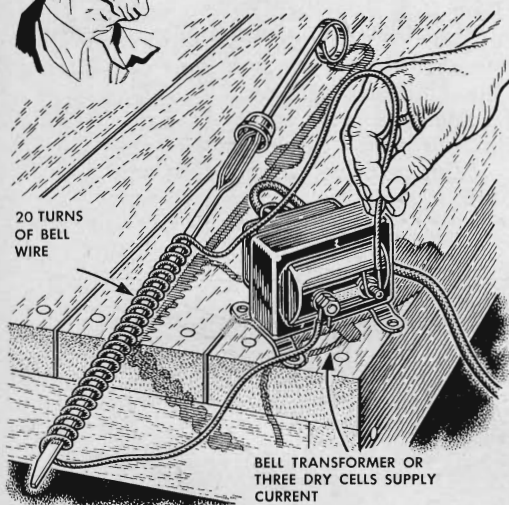




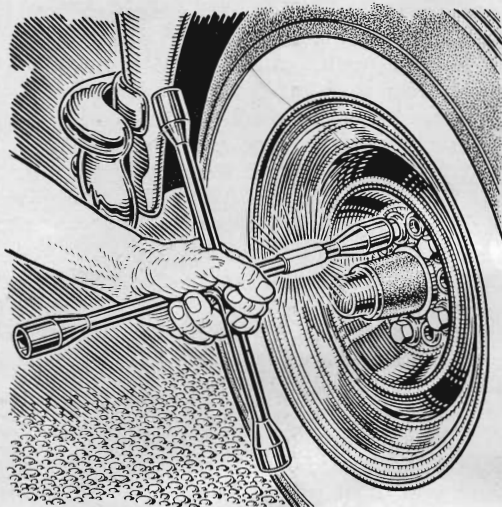
Hints from the Model Garage



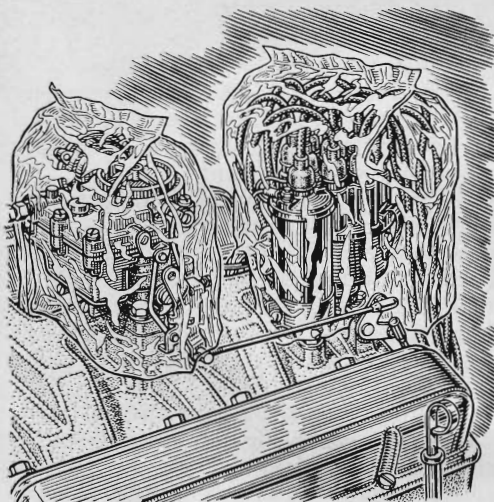
20 TURNS
OF BELL
WIRE

BELL TRANSFORMER OR
THREE DRY CELLS SUPPLY
CURRENT

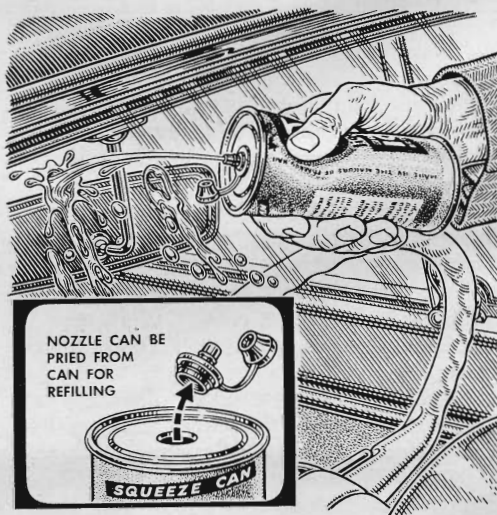
A magnetized dipstick will collect tiny iron and steel particles in a crankcase. Magnetize it with a quick pulse of current through a temporary coil. With AC you may need to repeat until you catch the current cycle at or near a peak.



A strip of reflective tape wrapped around one shank of a four-way lug wrench saves fumbling for the right socket when changing a tire. Little disks of the tape stuck on the bolt heads may keep them from being lost if you get a flat at night.

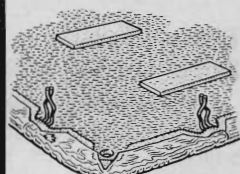
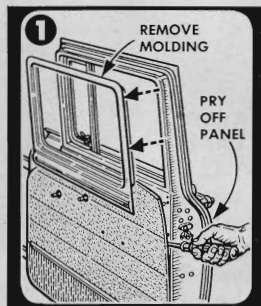
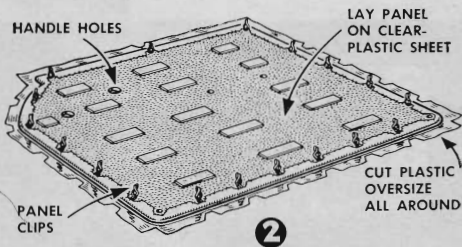
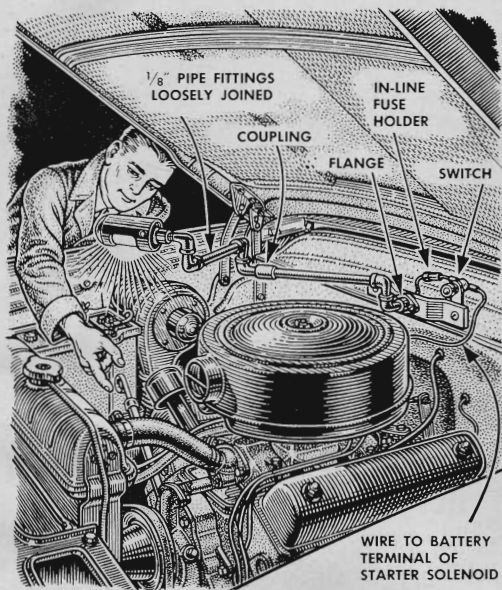


When washing or degreasing an engine, cover the carburetor, coil and distributor with plastic food-saver bags to keep them dry. After the washing, remove the covers and the engine should start easily, or at most after drying only the spark plugs.



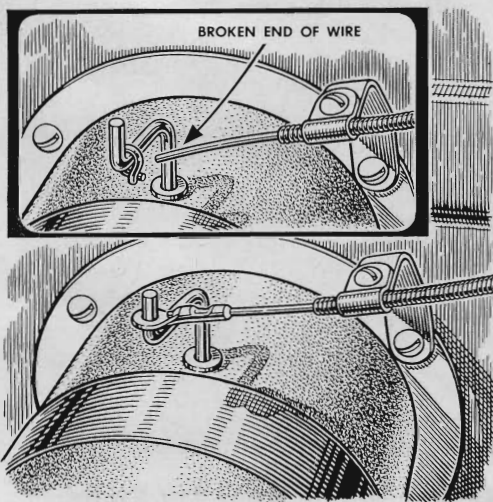
NOZZLE CAN BE
PRIED FROM
CAN FOR
REFILLING

To clear your windshield quickly of slush and muddy road spray raised by the cars ahead of you, squirt some water on the glass while operating the wipers. Store the water in one of the new squeeze cans used for liquid detergent.

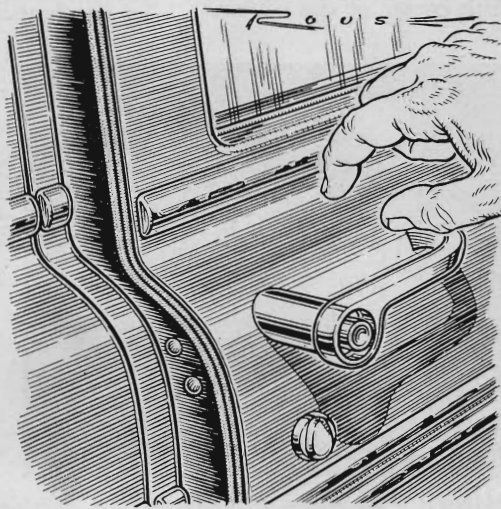


An under-hood lamp on swiveling pipe fittings puts light where you need it. Connect several feet of wire to a license-plate or map light and thread it through the fittings before loosely screwing them together. Bolt the unit to the fire wall.

Keep the new look in your car's interior by covering the cowl and door panels with sheets of clear plastic. Pry off the panels and cut the plastic to fit with an inch overlapping all around. Fold the edges over and secure them with tape.



A terminal lug makes a neat repair where the eye of a flexible control cable has broken off. Select a lug with a hole the diameter of the eye it will replace. Tin the end of the control wire or cable, slip on the lug and solder it in place.



Opening the doors slightly when you put your car in the garage after being out in the rain can add years to the life of the car's body. This hastens drying at critical areas such as door bottoms, which are usually the first to rust.