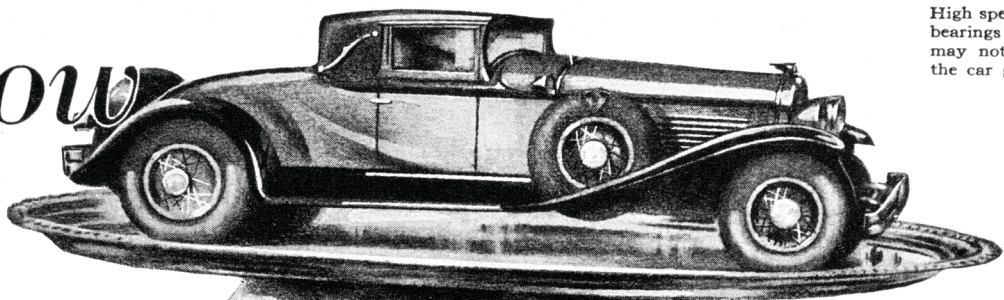
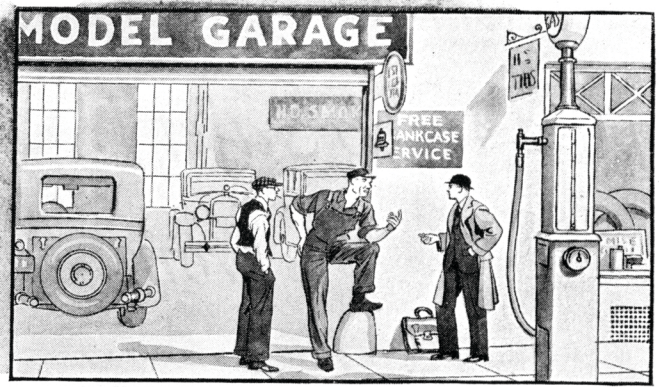


*How  
to*



High speed takes the life out of the bearings of a new car. The damage may not show itself at once, but the car grows old before its time.

# Break-In Your New Car



"Stay under twenty miles an hour for the first fifty miles," Gus said, "and don't do over twenty-five until you've gone 500 miles."

*It's a Temptation to Try Her Speed, Says Gus—  
But if You Hope to Keep Her Smooth and Quiet, Go Gently*