

## GROUP 32 - ACCESSORIES 32-1

# Group 32

## ACCESSORIES

### Contents

Title	Section	Page
Air Conditioning Compressor and Mounting, 6 Cylinder Engine	32-1	32-2
Air Conditioning Compressor and Mounting, 8 Cylinder Engine	32-2	32-2
Air Conditioning Condenser & Receiver Drier Assemblies Front Mounted Installation, 6 & 8 Cylinder Engines	32-3	32-4
Air Conditioning Condenser and Mounting - Roof Top, 6 & 8 Cylinder Engines.	32-4	32-6
Air Conditioning Evaporator Assembly - Front, 6 & 8 Cylinder Engine	32-5	32-8
Air Conditioning Evaporator Assembly - Rear	32-6	32-10
Air Conditioning Evaporator Mounting Assembly - Rear	32-7	32-12
Hoses and Tubes, Front Mounted Condenser and Evaporator, 6 Cylinder	32-8	32-14
Hoses and Tubes, Front Mounted Condenser and Evaporator, 8 Cylinder	32-9	32-14
Air Conditioning Hoses and Tubes, Dual Air Conditioning, 8 Cylinder	32-10	32-16
Air Conditioning Hoses and Tubes, Roof Top Condenser, 6 Cylinder	32-11	32-18
Air Conditioning Hoses and Tubes, Roof Top Condenser, 8 Cylinder	32-12	32-18
Dual Air Conditioning, Hoses and Tubes, Roof Top Condenser, 8 Cylinder. .	32-13	32-19
Front Evaporator Wiring	32-14	32-20
Front Evaporator With Roof Top Condenser Wiring	32-15	32-20
Dual Air Conditioning Wiring	32-16	32-22
Dual Air Conditioning With Roof Top Condenser Wiring	32-17	32-24
Radio and Antenna Installation	32-18	32-26
Radio Speaker - Rear Mounted	32-19	32-28
Antenna Assembly - Two Way Radio	32-20	32-29
Conduit - Two Way Radio	32-21	32-29
Defogger - Rear Window	32-22	32-30
Heater - Underseat Floor Mounted	32-23	32-31
Power Door Locks - Electric	32-24	32-32
Power Door Locks - Electric (Continued)	32-25	32-34
Driver's Control - Rear Door	32-26	32-36
Mirror Asm. - Outside Rearview Rectangular	32-27	32-36
Moldings - Fender & Door Side	32-28	32-36
Spotlight Assembly	32-29	32-36
Vinyl Roof	32-30	32-36

**GROUP 32 - ACCESSORIES 32-2**

A	A
11	12

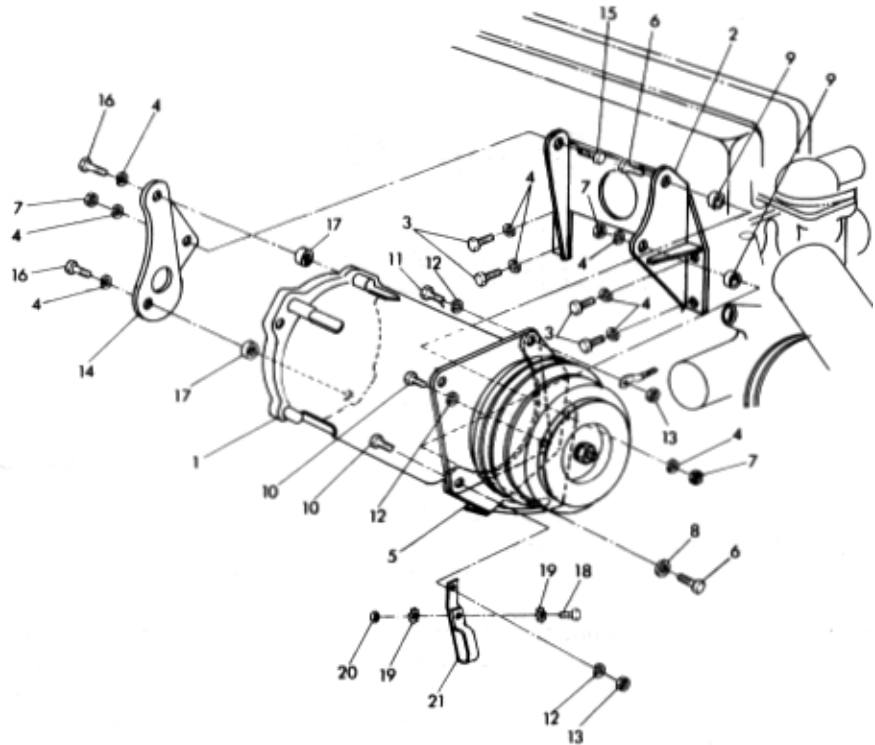


Figure 32-1 Air Conditioning Compressor and Mounting, 6 Cylinder Engine

A	A	A	A
11	11	12	12
	E		E

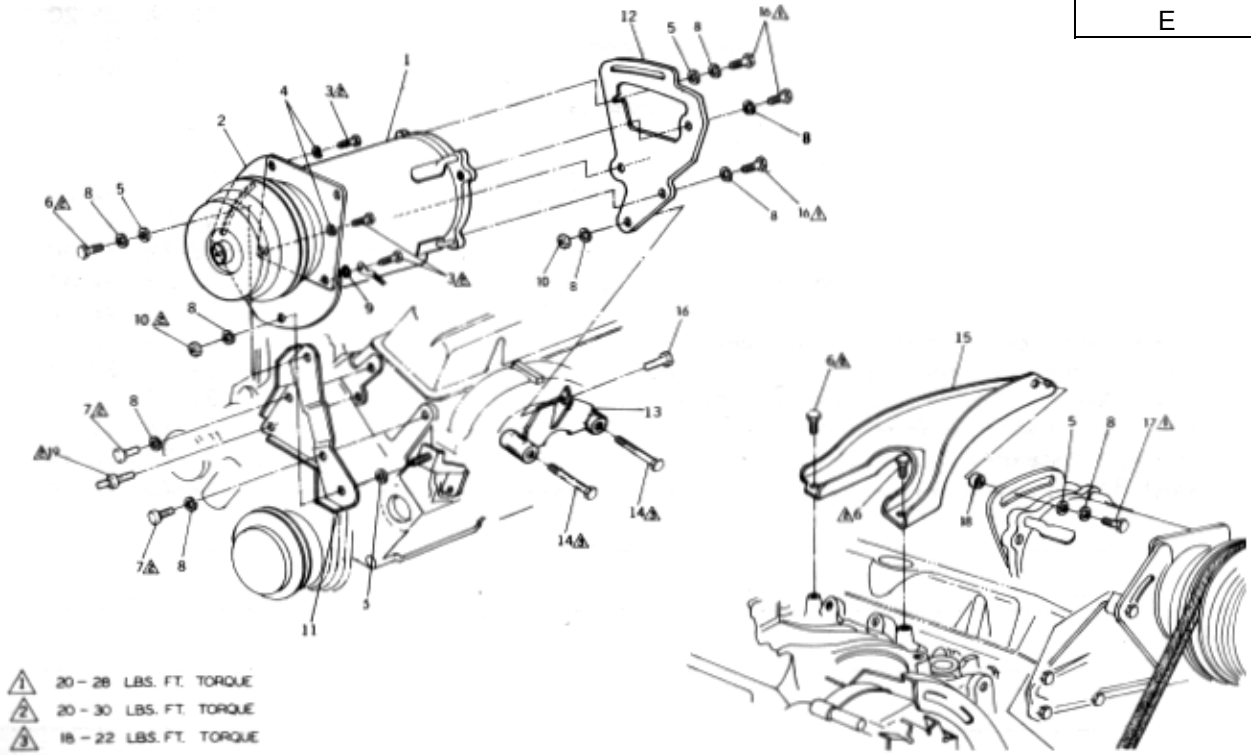


Figure 32-2 Air Conditioning Compressor and Mounting, 8 Cylinder Engine

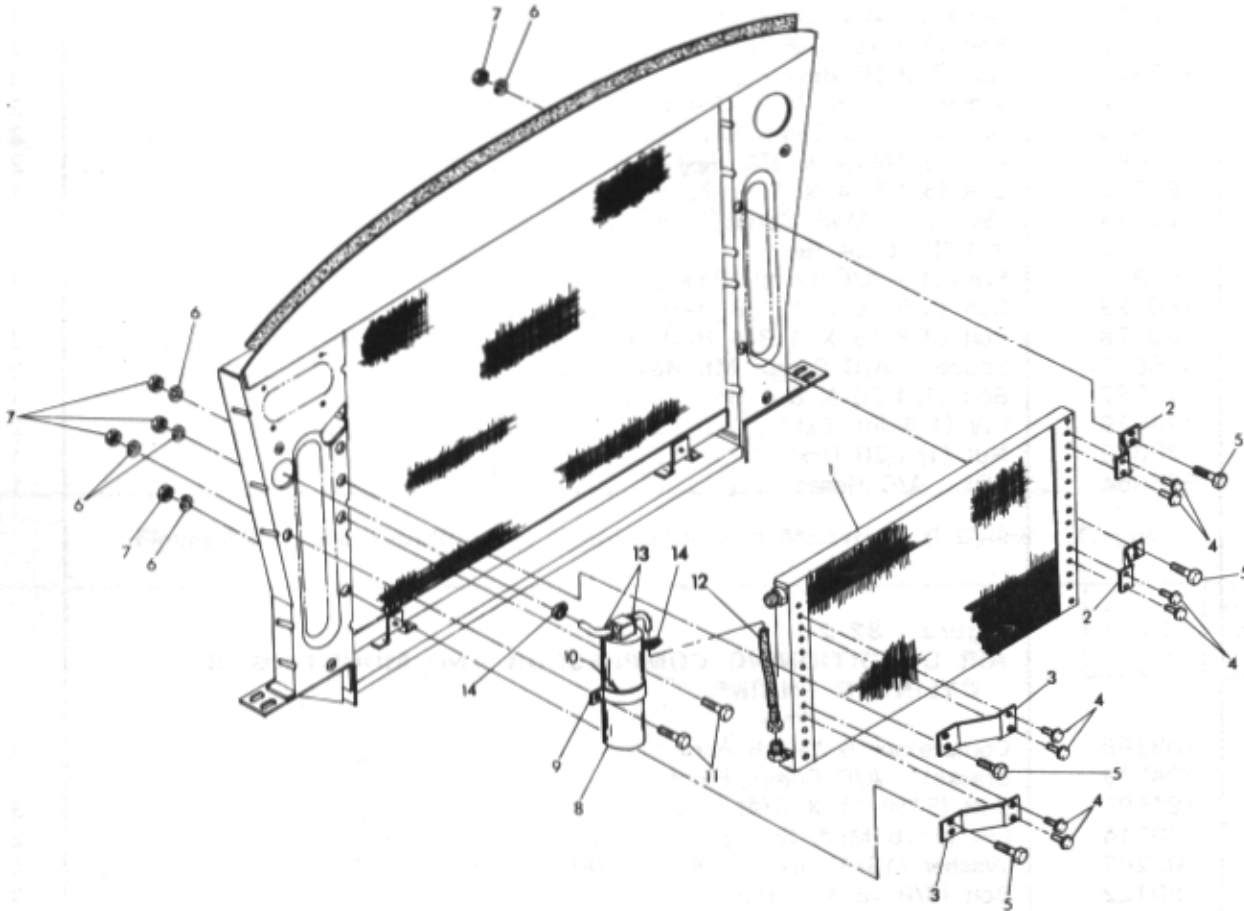
**Checker Motors Corp.**

## GROUP 32 - ACCESSORIES 32-3

Item	Part Number	Description	Qty
Figure 32-1			
AIR CONDITIONING COMPRESSOR AND MOUNTING, 6 CYLINDER ENGINE			
1	703389	Compressor & Clutch Asm. - A/C	1
2	705530	Support Asm. - A/C Comp. Mt	1
3	180121	Bolt (3/8-16 X 7/8 Hex)	4
4	120382	LW (3/8 Med. Spring)	9
5	706312	Bracket - A/C Comp. Frt	1
6	180132	Bolt (3/8-16 X 2 1/4 Hex)	2
7	120377	Nut (3/8-16 Hex)	3
8	702262	Washer (13/32 ID X 3/4 OD X 1/8)	1
9	706610	Spacer - A/C Comp. Mt. Frt	2
10	181595	Bolt (5/16-24 X 3/4 Hex)	2
11	181608	Bolt (5/16-24 X 1 Hex)	1
12	120214	LW (5/16 Med. Spring)	3
13	120368	Nut (5/16-24 Hex)	2
14	702921	Bracket - A/C Comp. Rear	1
15	180123	Bolt (3/8-16 X 1 1/8 Hex)	1
16	180128	Bolt (3/8-16 X 1 3/4 Hex)	2
17	706611	Spacer - A/C Comp. Mt. Rear	2
18	121887	Bolt (1/4-20 X 3/4 Hex)	1
19	174916	LW (1/4 Int. Ext.)	2
20	120375	Nut (1/4-20 Hex)	1
21	646664	Clip - A/C Hoses	1
Figure 32-2			
AIR CONDITIONING COMPRESSOR AND MOUNTING, 8 CYLINDER ENGINE			
1	703389	Compressor & Clutch Asm	1
2	704519	Bracket - A/C Comp. Front	1
3	181595	Bolt (5/16-24 X 3/4)	3
4	120214	LW (5/16 Med. Spring)	2
5	702262	Washer (13/32 ID X 3/4 OD 1/8)	4
6	180122	Bolt (3/8-16 X 1 Hex)	3
7	180120	Bolt (3/8-16 X 3/4 Hex)	2
8	120382	LW (3/8 Med. Spring)	9
9	138485	LW (5/16 Ext. Tooth)	1
10	120377	Nut (3/8-16 Hex)	2
11	705874	Support Asm. - A/C Comp. Bracket - Front	1
12	706668	Bracket - A/C Comp. Rear	1
13	705902	Support Asm. - A/C Comp. Rear Bracket	1
14	704236	Bolt (3/8-16 X 3 21/22 Hex)	2
15	703963	Brace Asm. - A/C Comp. - Rear	1
16	180124	Bolt (3/8-16 X 1 1/4 Hex)	4
17	180128	Bolt (3/8-16 X 1 3/4 Hex)	1
18	706956	Spacer - A/C Comp. Mt. Rear	1
19	708035	Stud - A/C Comp. Brkt. Frt. Supt	1

**GROUP 32 - ACCESSORIES 32-4**

A	A	A	A
11	11	12	12
	E		E



*Figure 32-3 Air Conditioning Condenser & Receiver Drier Assemblies Front Mounted Installation. 6 & 8 Cylinder Engines*

## GROUP 32 - ACCESSORIES 32-5

Item	Part Number	Description	Qty
		Figure 32-3 AIR CONDITIONING CONDENSER & RECEIVER DRIER ASSEMBLIES FRONT MOUNTED INSTALLATION, 6 & 8 CYLINDER ENGINES	
1	645284	Condenser Asm	1
2	646149	Bracket - LH	2
3	646150	Bracket - RH	2
4	274105	Screw (#10-24 X 3/8 Hex Wa. Hd.)	8
5	121887	Bolt (1/4-20 X 3/4 Hex)	4
6	120380	LW (1/4 Med. Spring)	6
7	120375	Nut (1/4-20 Hex)	6
8	645285	Receiver Drier	1
9	644269	Bracket	1
10	644283	Insulation - Mt. Bracket	1
11	120854	Bolt (1/4-20 X 5/8 Hex)	2
12	645297	Hose Asm	1
13	645301	Fitting (90° X 3/8)	2
14	703240	Clamp	2

**GROUP 32 - ACCESSORIES 32-6**

A	A	A	A
11	11	12	12
	E		E

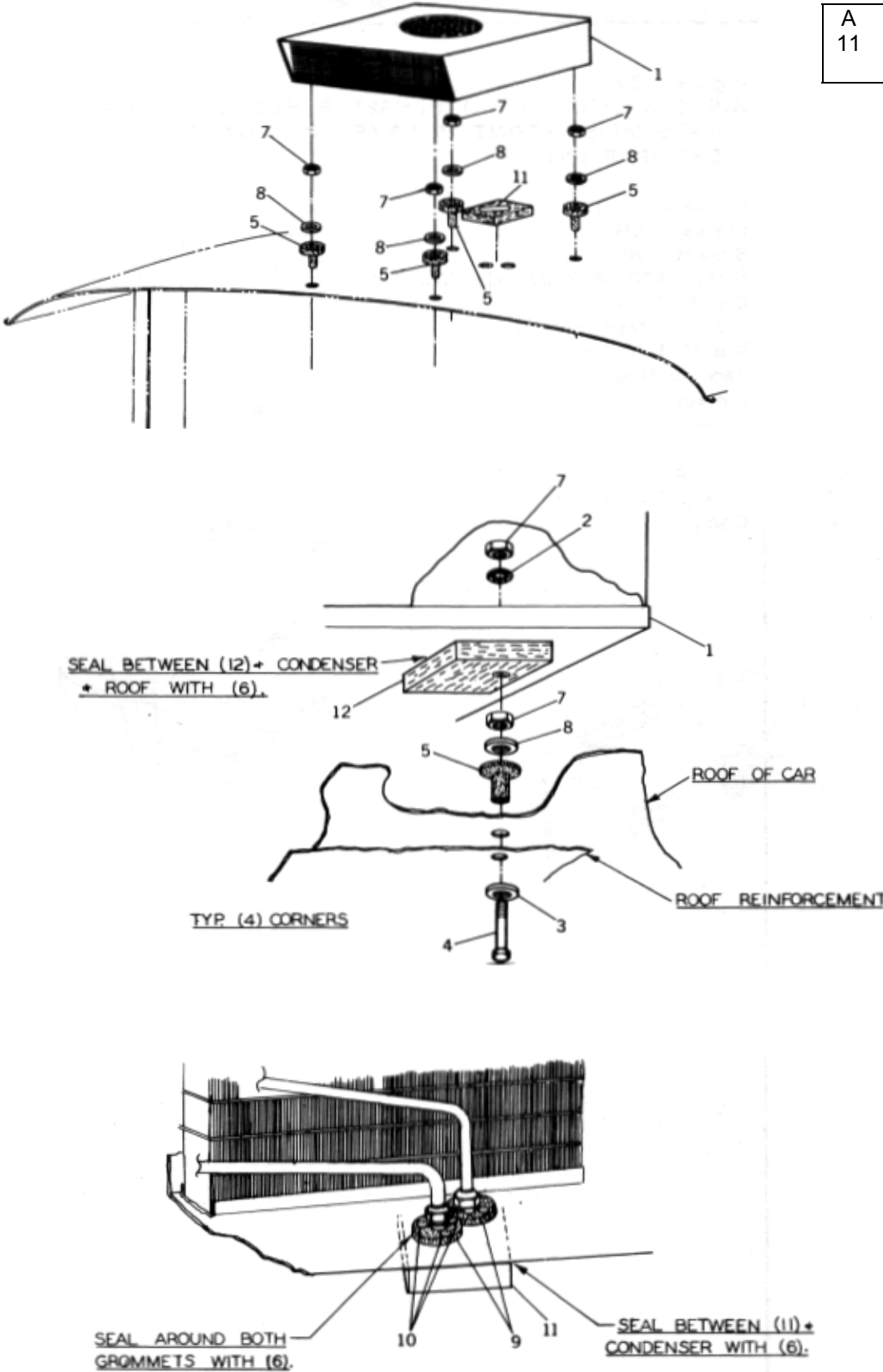


Figure 32-4 Air Conditioning Condenser and Mounting .Roof Top. 6 & 8 Cylinder Engines

## GROUP 32 - ACCESSORIES 32-7

Item	Part Number	Description	Qty
		Figure 32-4	
		AIR CONDITIONING CONDENSER AND MOUNTING - ROOF TOP. 6 & 8 CYLINDER ENGINES	
1	643685	Condenser - Roof Top	1
2	136857	LW - Condenser Mt. Lower - (7/16 Int. Tooth)	4
3	446363	Washer - Condenser Mt. Lower - (3/8 ID)	4
4	05189	Screw - Condenser Mt. - (3/8-16 X 2 1/2 Hex)	4
5	05190	Well Nut - Condenser Mt	4
6	ML-105	Sealer	A/R
7	120377	Nut - Condenser Mt. Lower - (3/8-16 Hex)	8
8	446477	Washer - Condenser Mt. Upper - (7/16 ID X 1 3/8 OD)	4
9	646272	Grommet - Condenser Tube Mt	2
10	626456	Screw & Washer Asm. - Condenser Tube Mt. (#8 X 3/4 OHCR Tap. #6 Hd.)	6
11	646266	Seal - Condenser Tube Mt	1
12	646267	Pad - Condenser Mt	4
	645965	Boot Asm. - Roof Top Cond. Hose	1

**GROUP 32 - ACCESSORIES 32-8**

A	A	A	A
11	11	12	12
	E		E

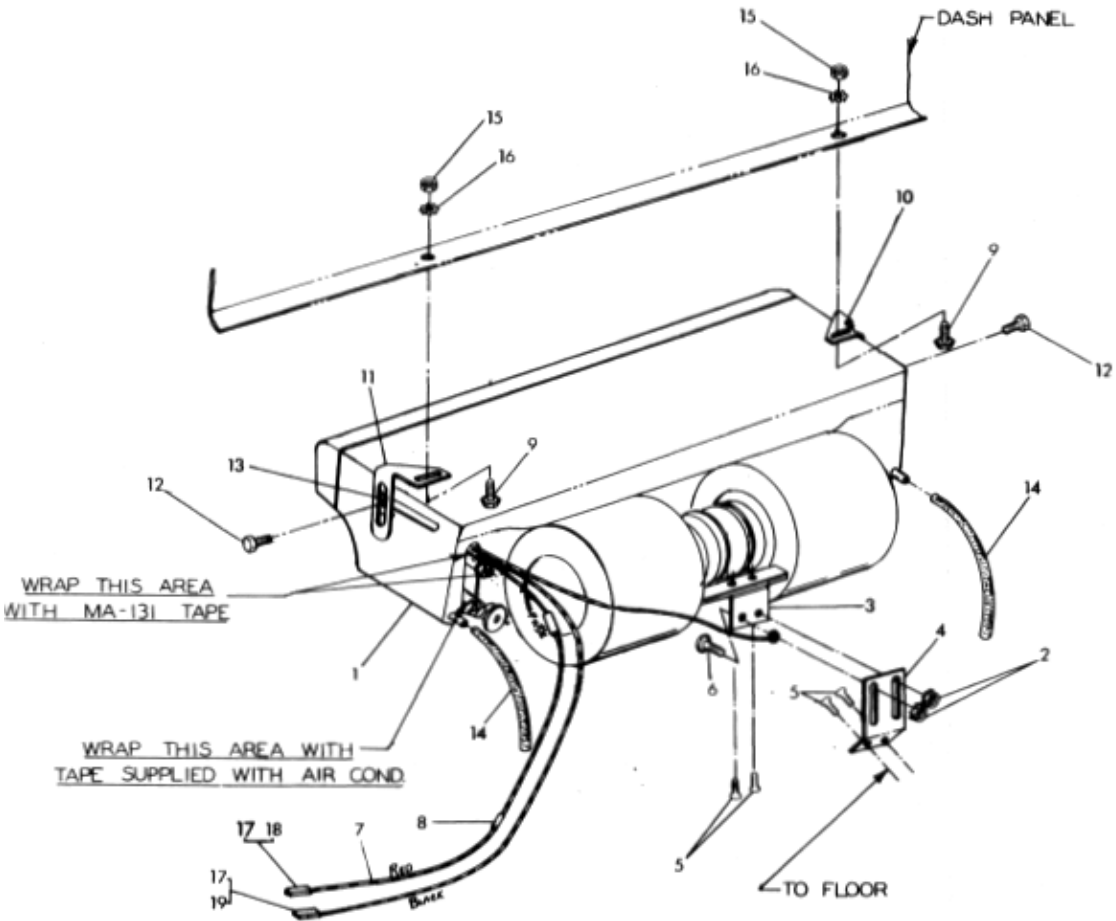


Figure 32-5 Air Conditioning Evaporator Assembly .Front. 6 & 8 Cylinder Engine



## GROUP 32 - ACCESSORIES 32-9

Item	Part Number	Description	Qty
		Figure 32-5	
		AIR CONDITIONING EVAPORATOR ASSEMBLY - FRONT, 6 & 8 CYLINDER ENGINE	
	653060	Evaporator Asm. - Complete Front Mounted Condenser	1
	653061	Evaporator Asm. - Complete One Control Circuit - Roof Top Cond	1
	653062	Evaporator Asm. - Complete Dual Air - Front Mounted Condenser	1
	653063	Evaporator Asm. - Complete Dual Air - Roof Top Condenser	1
1	653026	Evaporator - Front	1
	012300	Case - Top	1
	012301	Case - Bottom	1
	012302	Insulation - Case Top & Bottom	2
	012303	Coil Evaporator	1
	012304	Valve - Expansion	1
	012305	Clamp - Expansion Bulb	1
	012306	Tape - Valve Wrap (6")	1
	012307	Filter - Coil	1
	012308	Motor	1
	012309	Ring - Motor Insulation	1
	012310	Blower Wheel With Retainer	2
	012311	Wiring Harness - Std. Evap	1
	012312	Switch - 3 Position	1
	012313	Thermostat - W/ 18" Cap Tube	1
	012314	Wire - Jumper (6")	1
	012316	Knob - Temperature Control	1
	012317	Knob - Air Control	1
	012318	Snap - in Case Mounting	6
	012324	Louver - Side	2
	012325	Front - Evaporator	1
	012326	Louver - Front	2
	012327	Panel - Switch	1
	9420721	Screw - Motor Mounting (#8 X 3/4 PHCR)	2
	9422692	Screw - Motor Mounting (#10 X 15/16 PHCR)	2
	161895	Screw - Coil Mounting (#10 X 1/2 PHCR)	2
	9422750	Screw - Louver Mounting (#6 X 3/8 PHCR)	8
2	271172	Nut & LW Asm. (1/4-20)	2
3	646489	Support - Rear	1
4	646430	Support - Floor	1
5	161909	Screw (#10 X 1 PHCR)	4
6	189129	Screw (1/4-20 X 5/8)	2
7	MD-127	Wire (#14 Ga. Red)	1
8	626810	Splicer	1
9	9417496	Screw (#10-32 X 1/2)	2
	012322	Kit - Evap. Hanger (Furn. W/Evap)	1
10	NSS	Bracket - LH	1
11	NSS	Bracket - RH	1
12	NSS	Bolt (1/4-20 X 1/2 Hex)	2
13	NSS	Washer (7/16 ID X 3/4 OD)	2
14	012323	Hose (3/8 X 15 Drain) Furnished With Evaporator	2
15	120614	Nut (#10-32)	2
16	178378	LW (#10 Int. Ext.)	2
17	626782	Terminal	2
18	626809	Conn. Body - Black	1
19	626584	Conn. Body - White	1

# GROUP 32 - ACCESSORIES 32-10

A	A	A	A
11	11	12	12
	E		E

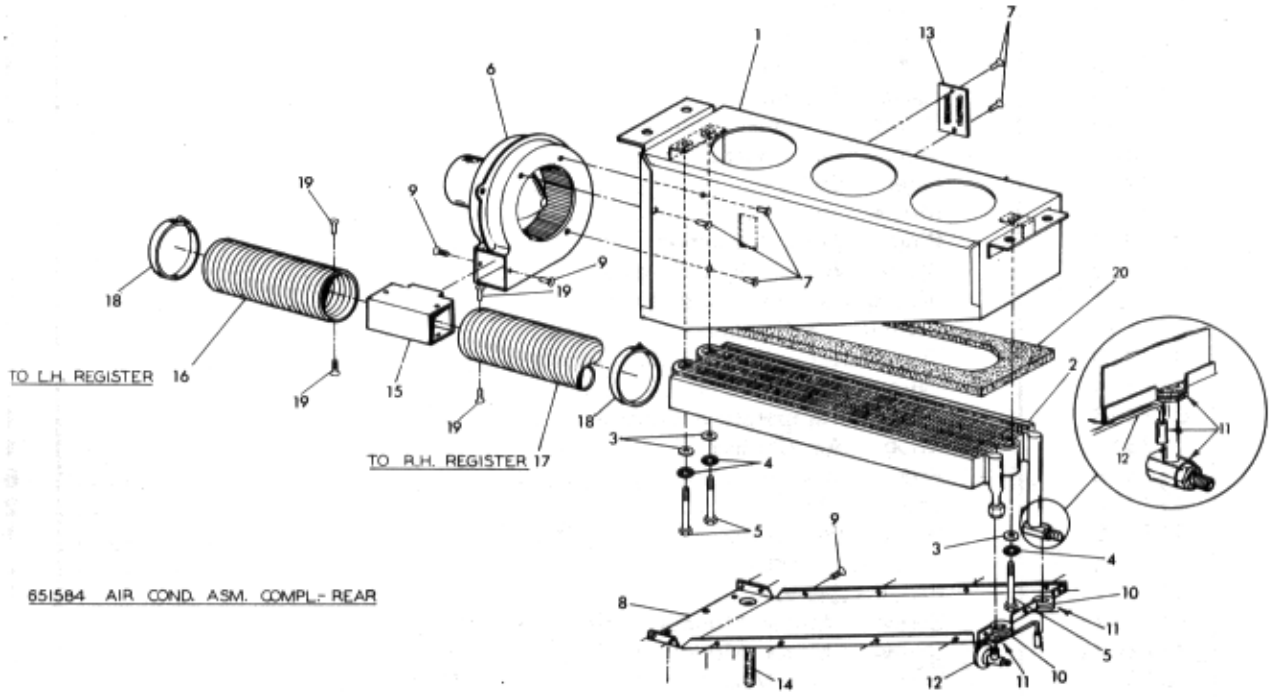


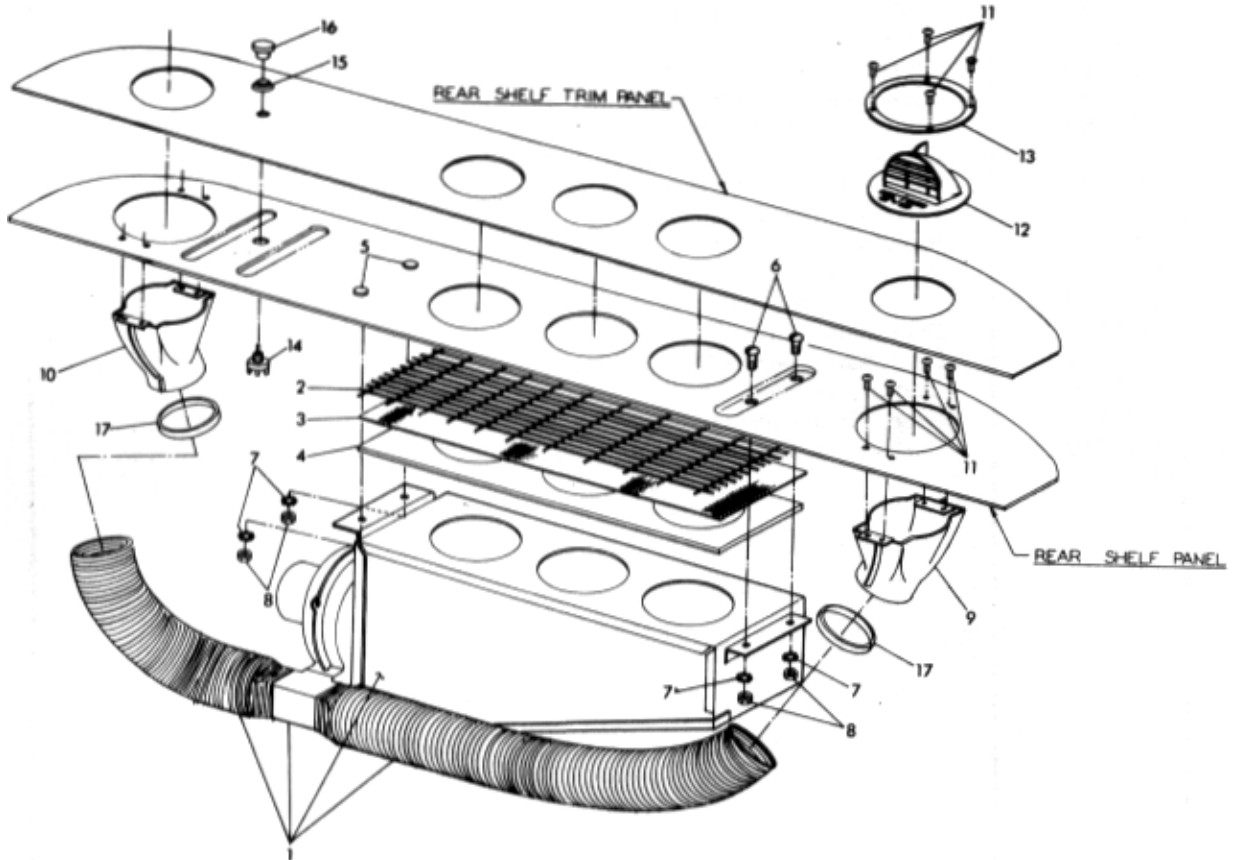
Figure 32-6 Air Conditioning Evaporator Assembly .Rear

## GROUP 32 - ACCESSORIES 32-11

Item	Part Number	Description	Qty
		Figure 32-6	
		AIR CONDITIONING EVAPORATOR ASSEMBLY - REAR	
	651584	Evaporator Asm	1
1	651585	Housing Asm	1
2	643624	Core Asm	1
3	626504	Washer (11/32 ID X 1 1/2 OD)	3
4	120423	Lockwasher (1/4 Int. Tooth)	3
5	173206	Bolt (1/4-20 X 3 1/2 Hex)	3
6	651596	Blower Asm	1
	011930	Motor Asm. - Blower	1
	05975	Fan - Single Flat	1
7	161895	Screw (#10 X 1/2 Pan Hd. C/Rec.)	5
8	651586	Cover Asm. - Rear Evaporator Housing	1
9	163158	Screw (#8 X 3/8 PHCR)	20
10	702376	Grommet 3/4 X 1 1/16 X 1 3/8 X 3/8)	2
11	MA-i 31	Tape - Refrigerant Hvy. Du	1
12	645311	Valve Asm. - Expansion	1
13	647035	Resistor Asm	1
14	636853	Hose - Drain	1
15	651589	Adapter Asm. - Rear Evaporator Blower	1
16	653112	Duct Asm. - RH	1
17	653111	Duct Asm. - LH	1
18	9422753	Clamp Asm	2
19	626456	Screw & Washer Asm. (#8 X 3/4)	4
20	646839	Gasket - A/C Housing	1

**GROUP 32 - ACCESSORIES 32-12**

A	A	A	A
11	11	12	12
	E		E

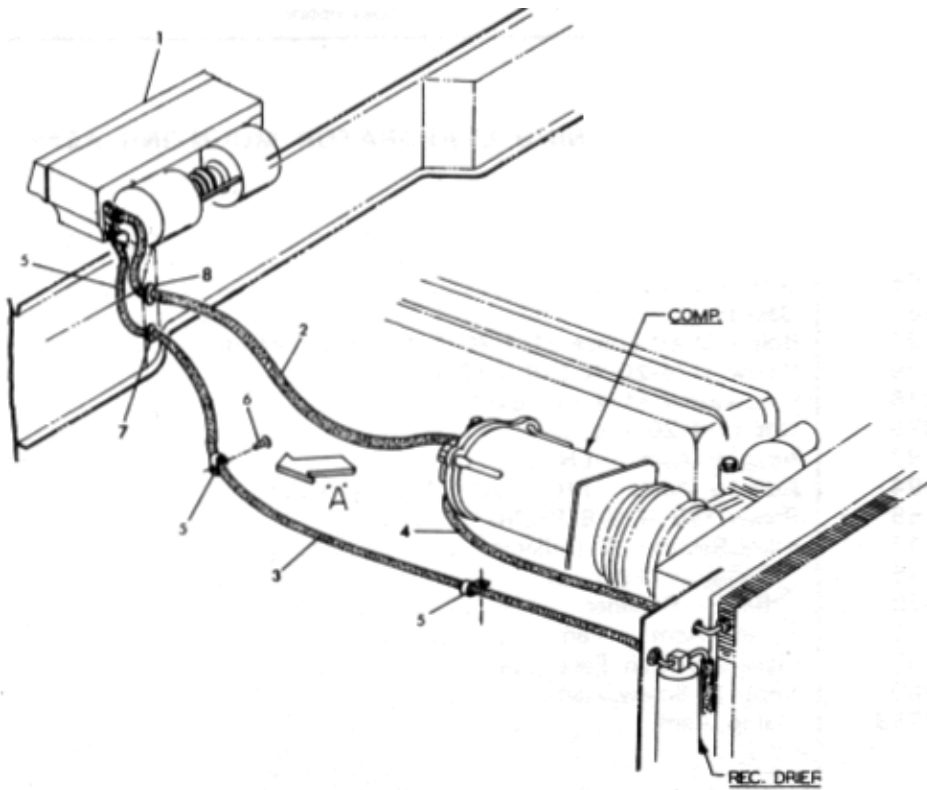


*Figure 32-7 Air Conditioning Evaporator Mounting Assembly .Rear*

## GROUP 32 - ACCESSORIES 32-13

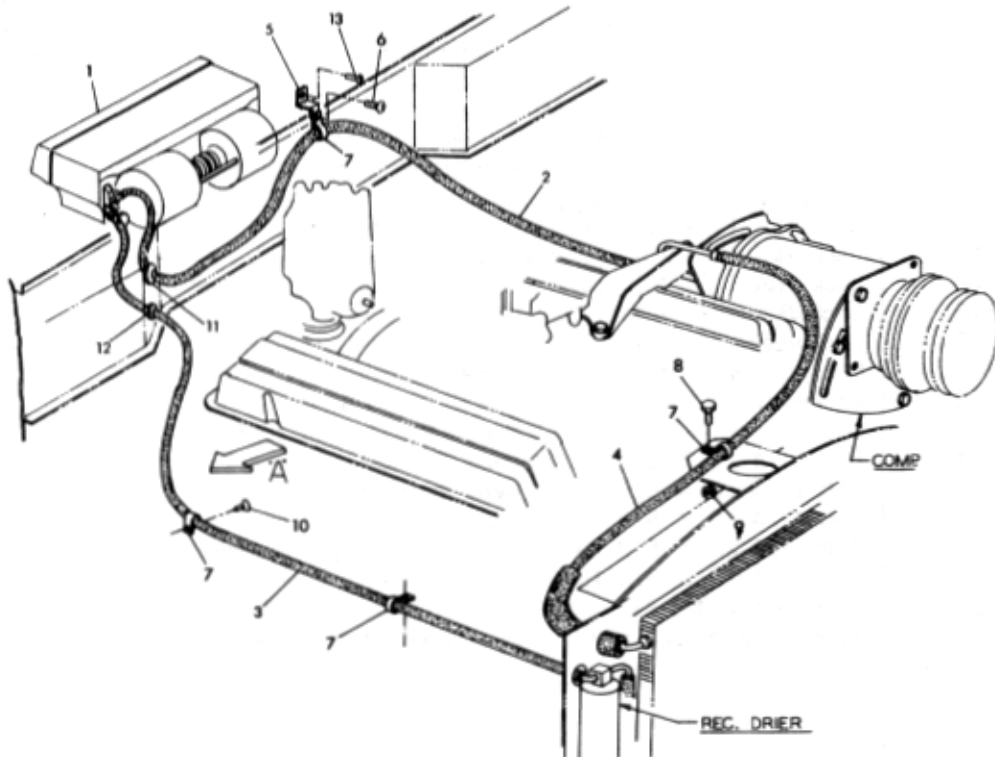
Item	Part Number	Description	Qty
Figure 32-7			
AIR CONDITIONING EVAPORATOR MOUNTING ASSEMBLY - REAR			
1	651584	Evaporator Asm	1
2	646567	Grille	1
3	646568	Screen	1
4	646569	Gasket	1
5	626292	Bolt - Used Loose (1/4-20 X 5/8 Ohio Weld)	2
6	189129	Screw (1/4-20 X 5/8 THCR)	2
7	174916	Lockwasher (1/4 tnt. Ext.)	4
8	120375	Nut (1/4-20 Hex)	4
9	651593	Adapter Asm. - LH	1
10	651594	Adapter Asm. - RH	1
11	163158	Screw (#8 X 3/8 PHCR)	16
	653117	Kit - Register & Deflector	2
12	653118	Deflector Asm	2
13	646570	Ring - Retainer	2
14	639570	Switch Asm. - Fan	1
15	627297	Plate - Switch Face	1
16	631960	Knob & Screw Asm	1
17	9422753	Clamp Asm	2
AIR CONDITIONING, REAR EVAPORATOR - GUARD INSTALLATION (NOT ILLUSTRATED)			
	646627	Panel - Rear Evaporator Guard	1
	646623	Bracket - Guard Mounting - Lower LH	1
	646624	Bracket - Guard Mounting - Lower RH	1
	646625	Bracket - Guard Mounting - Upper LH	1
	646626	Bracket - Guard Mounting - Upper RH	1
	453035	Nut (1/4-20) Guard to Mounting Brackets	4
	120375	Nut (1/4-20 Hex) LH Upper Bracket to Body	1
	271172	Nut & LW Asm. (1/4-20 Hex) Upper RH Brkt. to RH Deck Lid Hinge Support	1
	626448	Jack Nut (1/4-20) RH Lower Bracket to Floor	1
	626448	Jack Nut (1/4-20) LH Lower Bracket to Floor	1
	626448	Jack Nut (1/4-20) Lower Evaporator Support to Floor	1
	174916	Lockwasher (1/4 Int. Ext.) Lower Bracket to Floor Pan	2
	174916	Lockwasher (1/4 Int. Ext.) Lower Bracket to Guard	2
	174916	Lockwasher (1/4 Int. Ext.) Upper Bracket to Guard	2
	174916	Lockwasher (1/4 Int. Ext.) Lower Evap. Supt. to Floor Pan	1
	174916	Lockwasher (1/4 tnt. Ext.) Upper RH Bracket to Body	1
	120854	Bolt (1/4-20 X 5/8 Hex) Lower Bracket to Floor Pan	2
	120854	Bolt (1/4-20 X 5/8 Hex) Lower Bracket to Guard	2
	120854	Bolt (1/4-20 X 5/8 Hex) Upper Bracket to Guard	2
	120854	Bolt (1/4-20 X 5/8 Hex) Lower Evap. Supt. to Floor Pan	1
	120854	Bolt (1/4-20 X 5/8 Hex) Upper RH Bracket to RH Deck Lid Hinge Supt	1
	121752	Lockwasher (#8 Ext. Tooth) Lower Support to Blower	1
	163158	Screw (#8 X 3/8 PHCR) Lower Support to Blower	1

**GROUP 32 - ACCESSORIES 32-14**



A	A
11	12

*Figure 32-8 Hoses and Tubes, Front Mounted Condenser and Evaporator, 6 Cylinder*



A	A	A	A
11	11	12	12
	E		E

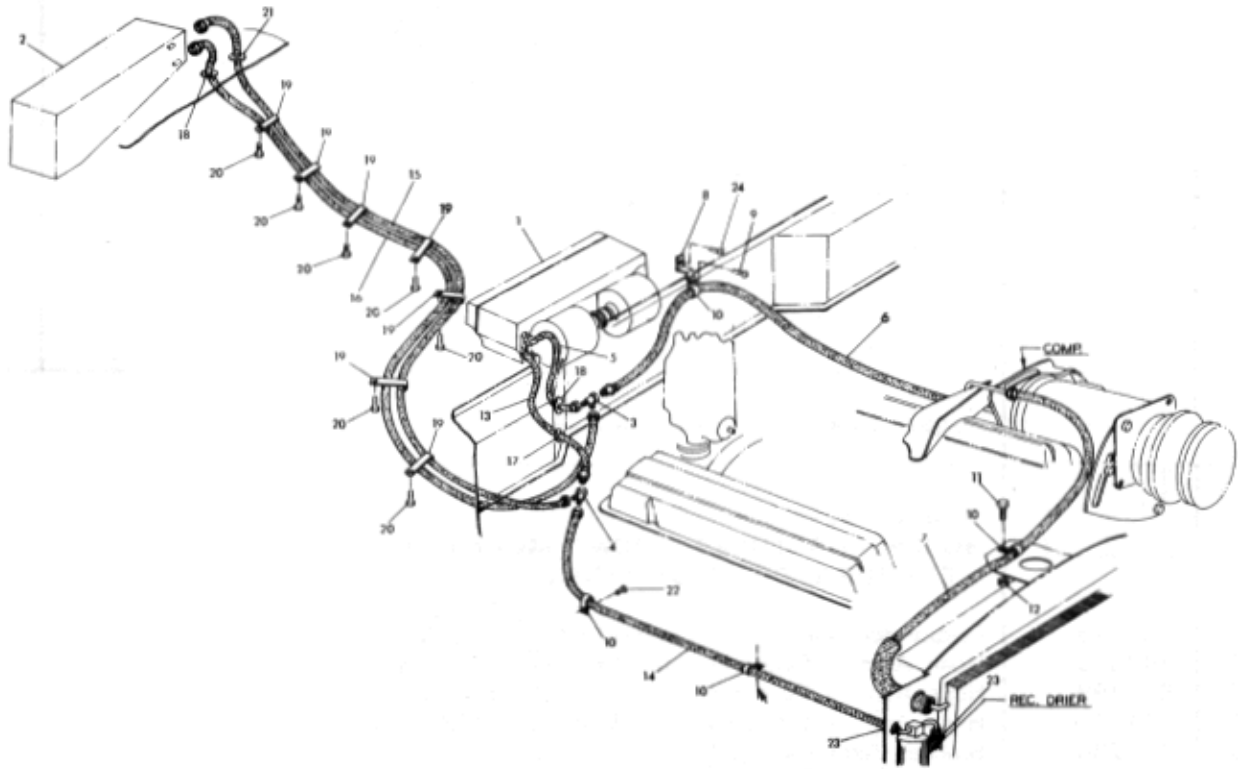
*Figure 32-9 Hoses and Tubes, Front Mounted Condenser and Evaporator, 8 Cylinder*

## GROUP 32 - ACCESSORIES 32-15

Item	Part Number	Description	Qty
Figure 32-8			
HOSES AND TUBES, FRONT MOUNTED CONDENSER AND EVAPORATOR, 6 CYLINDER			
1	653026	Evaporator Asm. - A/C Compl	1
2	653255	Hose Asm. - Evaporator to Compressor (1/2 ID - 34")	1
3	645299	Hose Asm. - Evaporator to RCVR. Drier (5/16 ID - 6")	1
4	653256	Hose Asm. - Compressor to Condenser (13/32 ID)	1
5	702221	Clamp	2
6	626456	Screw & Washer Asm. (#8 X 3/4)	1
7	702376	Grommet (3/4 X 1 1/16 X 1 3/8 X 3/8)	1
8	626556	Grommet (1 X 1 3/4)	1
Figure 32-9			
HOSES AND TUBES. FRONT MOUNTED CONDENSER AND EVAPORATOR, 8 CYLINDER			
1	653026	Evaporator Asm. - Air Conditioner	1
2	647310	Hose Asm. - Evaporator to Compressor (1/2 ID)	1
3	645299	Hose Asm. - Evaporator to RCVR. Drier (5/16 ID)	1
4	651860	Hose Asm. - Compressor to Condenser (13/32 ID)	1
5	703730	Bracket Asm	1
6	189129	Screw (1/4-20 X 5/8)	1
7	702221	Clamp	4
8	120706	Bolt (1/4-20 X 1/2 Hex)	1
9	271172	Nut & LW Asm. (1/4-20 Hex)	1
10	626456	Screw & Washer Asm. (#8 X 3/4)	1
11	626556	Grommet (1 X 1 3/4)	1
12	702376	Grommet (3/4 X 1 1/16 X 1 3/8 X 3/8)	1
13	9425830	Screw (1/4-14 X 5/8 THCR)	1

**GROUP 32 - ACCESSORIES 32-16**

<b>A</b>	<b>A</b>	<b>A</b>	<b>A</b>
11	11	12	12
	E		E



*Figure 32-10 Air Conditioning Hoses and Tubes. Dual Air Conditioning, 8 Cylinder*



## GROUP 32 - ACCESSORIES 32-17

Item	Part Number	Description	Qty
Figure 32-10			
AIR CONDITIONING HOSES AND TUBES, DUAL AIR			
CONDITIONING, 8 CYLINDER			
1	653026	Evaporator Asm. - Complete Front	1
2	651584	Evaporator Asm. - Rear	1
3	635609	Tee Asm. (5/8 Hose)	1
4	635610	Tee Asm. (3/8 Hose)	1
5	701266	Hose Asm. - Evaporator to Tee (1/2 ID)	1
6	647365	Hose Asm. - Compressor to Tee (1/2 ID)	1
7	651860	Hose Asm. - Compressor to Condenser (13/32 ID)	1
8	703730	Bracket Asm. - Hose	1
9	189129	Screw (1/4-20 X 5/8)	1
10	702221	Clamp - Hose	4
11	120706	Bolt (1/4-20 X 1/2 Hex)	1
12	271172	Nut & LW Asm. (1/4-20 Hex)	1
13	701268	Hose Asm. - Evaporator to Tee (5/16 ID)	1
14	645300	Hose Asm. - Receiver Drier to Tee (5/16 ID)	1
15	645782	Hose Asm. - Dual Rear Evaporator Inlet	1
16	645783	Hose Asm. - Dual Rear Evaporator Outlet	1
17	702376	Grommet (3/4 X 1 1/16 X 1 3/8 X 3/8)	1
18	626556	Grommet (1 X 1 3/4)	2
19	626532	Clip (15/16 Double)	7
20	448655	Screw (1/4-28 X 1/2 Hex)	7
21	626514	Grommet (1 3/16 Dia. Hole)	1
22	626456	Screw & Washer Asm. (#8 X 3/4)	1
23	703240	Clamp Asm. - Hose	2
24	9425830	Screw (1/4-14 X 5/8 THCR)	1

**GROUP 32 - ACCESSORIES 32-18**

A	<b>A</b>
11	12

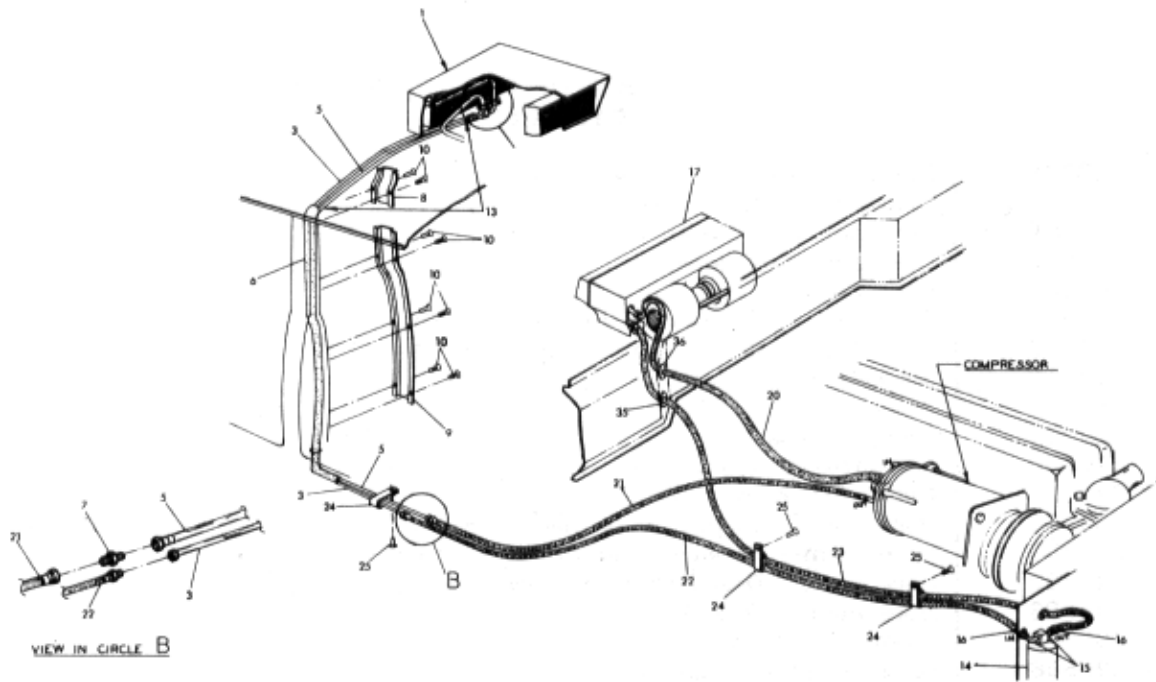


Figure 32-11 Air Conditioning Hoses and Tubes. Roof Top Condenser. 6 Cylinder

A	A	A	A
11	11	12	12
	E		E

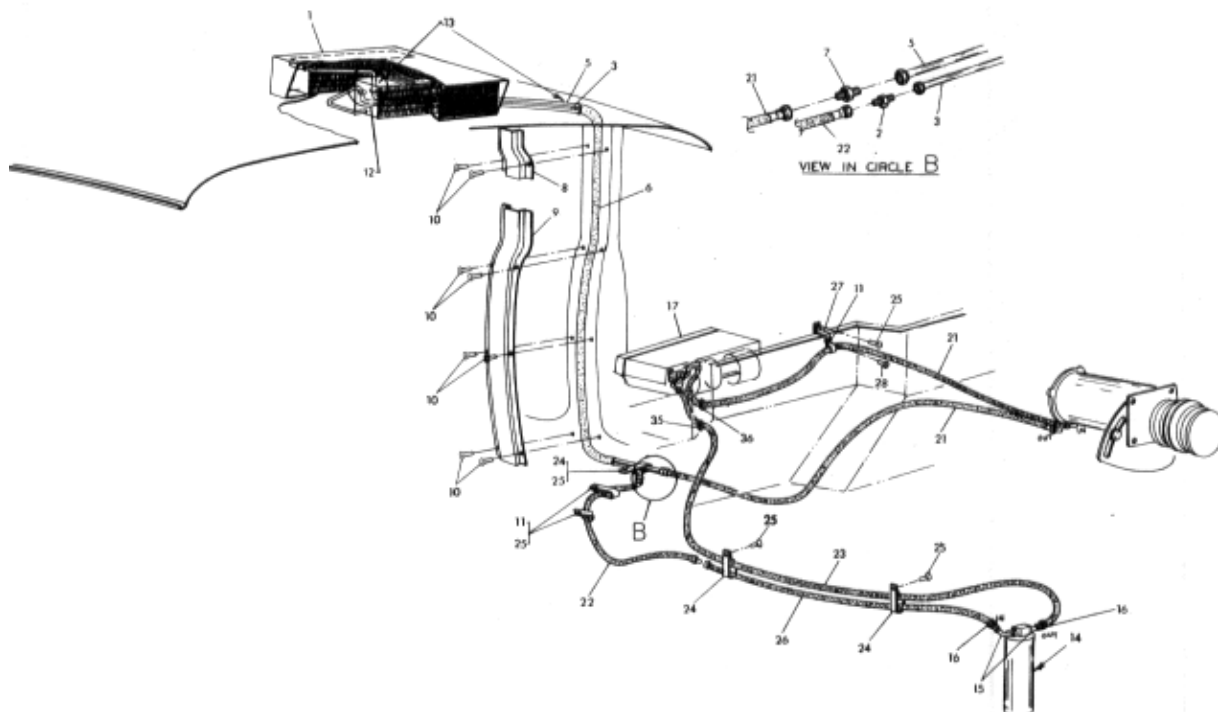
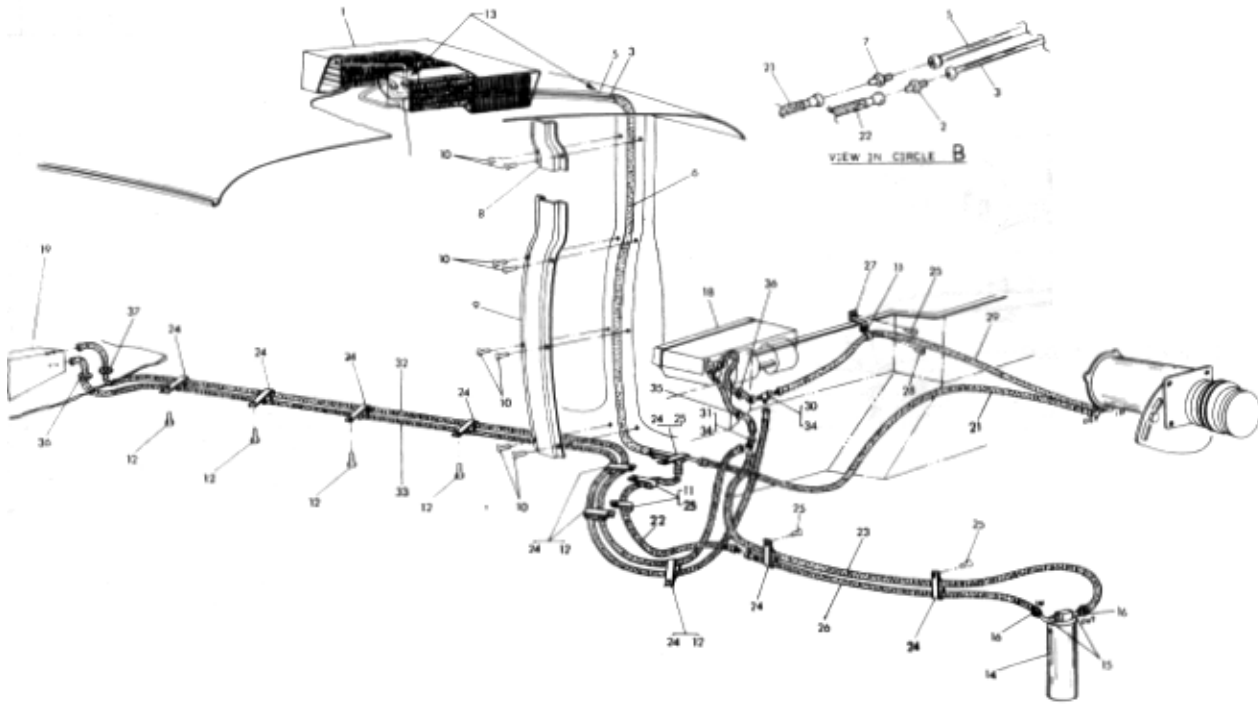


Figure 32-12 Air Conditioning Hoses and Tubes, Roof Top Condenser, 8 Cylinder  
**Checker Motors Corp.**

## GROUP 32 - ACCESSORIES 32-19

A	A	A	A
11	11	12	12
	E		E



*Figure 32-13 Dual Air Conditioning, Hoses and Tubes. Roof Top Condenser. 8 Cylinder*

Item	Part Number	Description	Qty
Figure 32-13 DUAL AIR CONDITIONING. HOSES AND TUBES, ROOF TOP CONDENSER, 8 CYLINDER			
1	647505	Condenser Asm. - Roof Top	1
2	118802	Union (3/8 Tube 45° Flare)	1
3	645976	Tube Asm. (3/8 R/T Cond. Outlet)	1
4	626842	Union (1/2 Tube 45° Flare)	1
5	645977	Tube Asm. (1/2 R/T Cond. Inlet)	1
6	MC-107	Loom - Woven (7/8 ID X 1 OD) (6')	1
7	626885	Union Reducer (5/8 to 1/2 Tube)	1
8	646706	Cover - Upper	1
9	646707	Cover - Lower	1
10	626456	Screw & Washer Asm. (#8 X 3/4 OHCR)	8
11	702221	Clamp (15/16 Closed)	1
12	448655	Screw (1/4-28 X 1/2)	1
13	645965	Boot Asm	1
14	645333	Receiver Drier	1
15	645301	Fitting (90° - 3/8 Fern.)	2
16	703240	Clamp Asm. - Adj. Hose	2
17	653061	Evaporator Asm. - W/R/T Cond	1
18	653063	Evaporator Asm. - W/Dual Air and R/T Cond	1
19	651584	Air Conditioner Asm	1
20	653255	Hose Asm	1
21	647310	Hose Asm	1
22	643688	Hose Asm	1
23	645299	Hose Asm	1
24	626532	Clip (15/16 Double Closed)	1

## GROUP 32 - ACCESSORIES 32-20

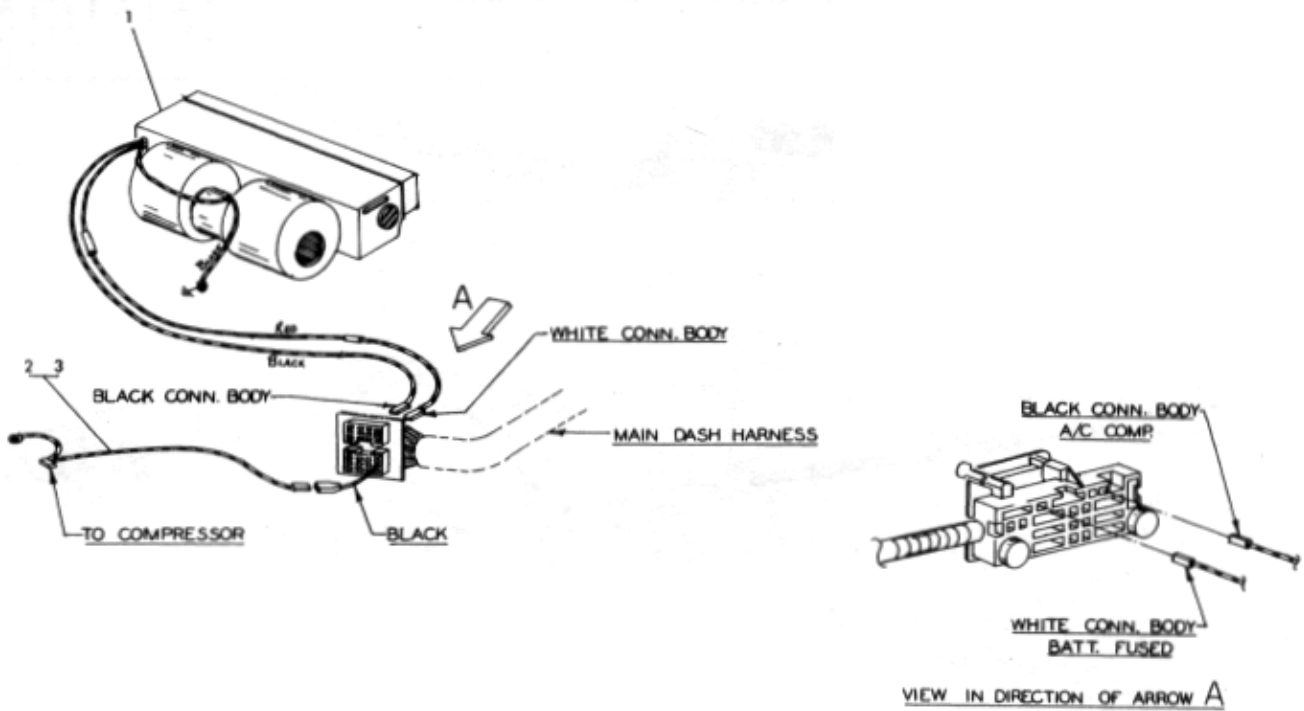


Figure 32-14 Front Evaporator Wiring

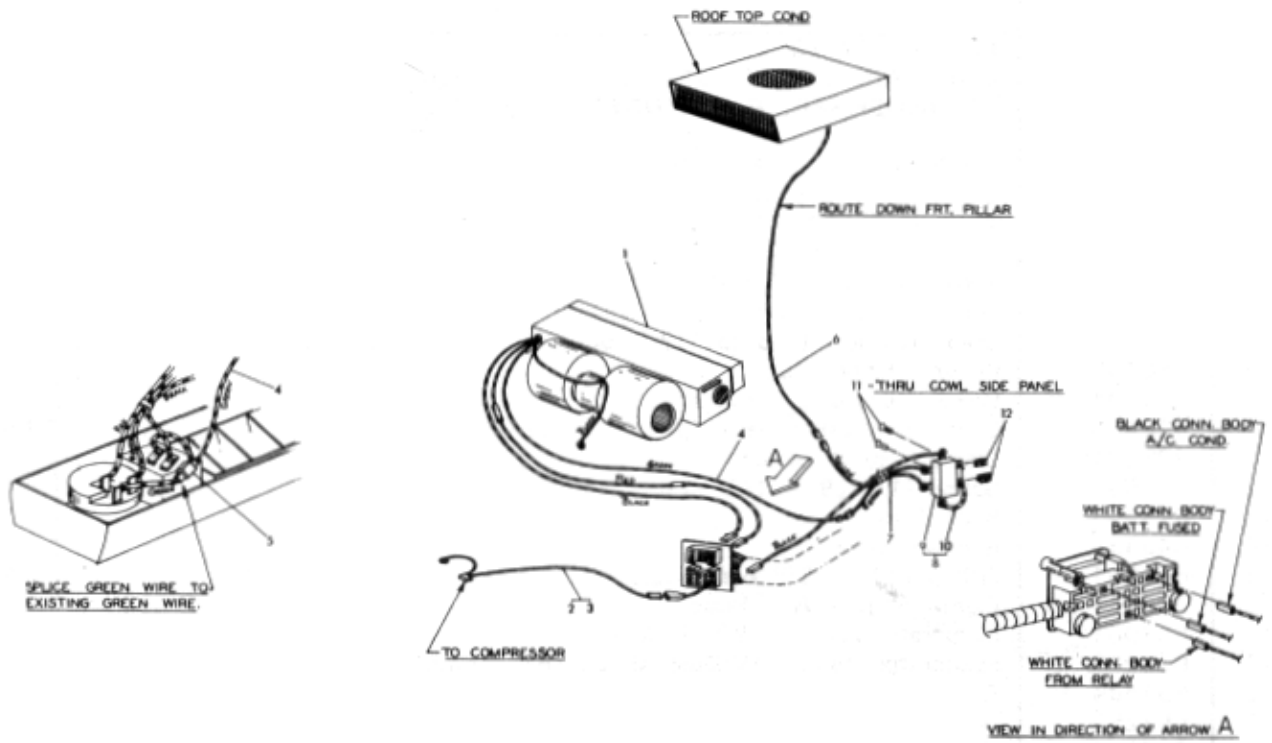


Figure 32-15 Front Evaporator With Roof Top Condenser Wiring

## GROUP 32 - ACCESSORIES 32-21

Item	Part Number	Description	Qty
Figure 32-13			
DUAL AIR CONDITIONING. HOSES AND TUBES, ROOF TOP CONDENSER, 8 CYLINDER (Cont'd)			
25	9425830	Screw (1/4-14 X 5/8 THCR) 1	
26	645300	Hose Asm	1
27	703730	Bracket Acm	1
28	189129	Screw (1/4-20 X 5/8 THCR)	1
29	647365	Hose Asm	1
30	635609	Tee Asm. (5/8)	1
31	635610	Tee Asm. (3/8)	1
32	645782	Hose Asm	1
33	645783	Hose Asm	1
34	MA-131	Tape	1
35	702376	Grommet (3/4 X 1 1/16 X 1 3/8 X 3/8)	1
36	626556	Grommet (1 X 3/4)	1
37	626514	Grommet (1 3/16 Dia. Hole)	1
Figure 32-14			
FRONT EVAPORATOR WIRING			
1	653026	Evaporator	1
2	703595	Wire - Complete 8 Cylinder	1
3	703596	Wire - Complete 6 Cylinder	1
Figure 32-15			
FRONT EVAPORATOR WITH ROOF TOP CONDENSER WIRING			
1	653061	Evaporator	1
2	703595	Wire - Compressor - 8 Cyl	1
3	703596	Wire - Compressor - 6 Cyl	1
4	647900	Wire Asm	1
5	626886	Connector	1
6		Make from Wire in Kit	
	653070	Harness & Relay Asm	1
7	653071	Harness Asm. - AIT Cond. Relay	1
8	651848	Relay & Lead Asm. - A/C	1
9	651837	Relay Asm	1
10	635279	Lead Asm. Relay Cluster	1
11	626898	Screw (#8 X 3/4)	2
12	626894	Nut (Tinnerman)	2

**GROUP 32 - ACCESSORIES 32-22**

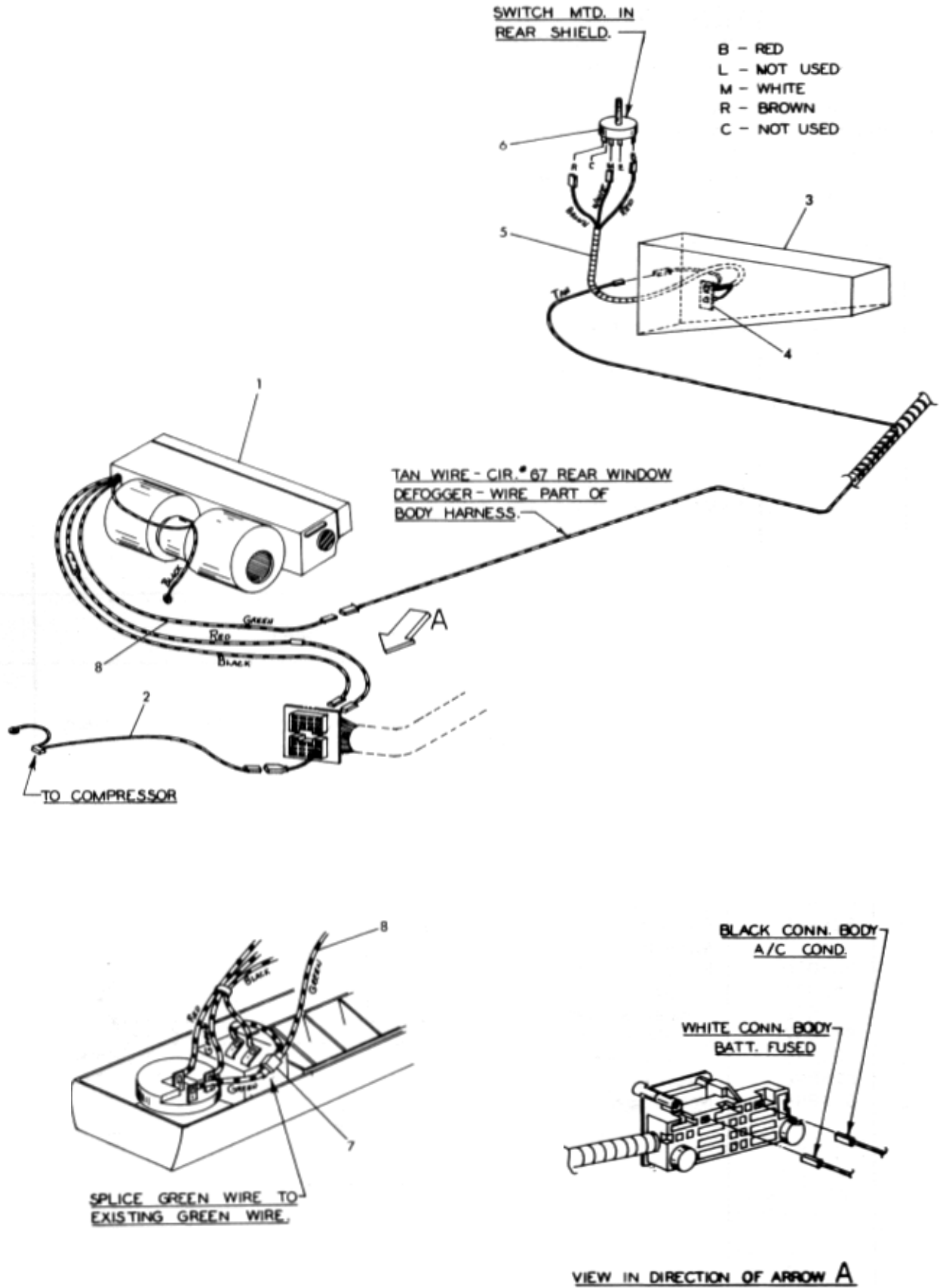


Figure 32-16 Dual Air Conditioning Wiring

**Checker Motors Corp.**

## GROUP 32 - ACCESSORIES 32-23

Item	Part Number	Description	Qty
		Figure 32-16 DUAL AIR CONDITIONING WIRING	
1	653062	Evaporator	1
2	703595	Wire Asm. - Compressor 8 Cyl	1
3	651584	Air Conditioner Asm. - Rear	1
4	647035	Resistor	1
5	651595	Harness Asm. - Rear Evaporator	1
6	639570	Switch	1
7	626886	Connector	1
8	647901	Wire Asm. - Rear Evaporator	1

# GROUP 32 - ACCESSORIES 32-24

A	A	A	A
11	11	12	12
	E		E

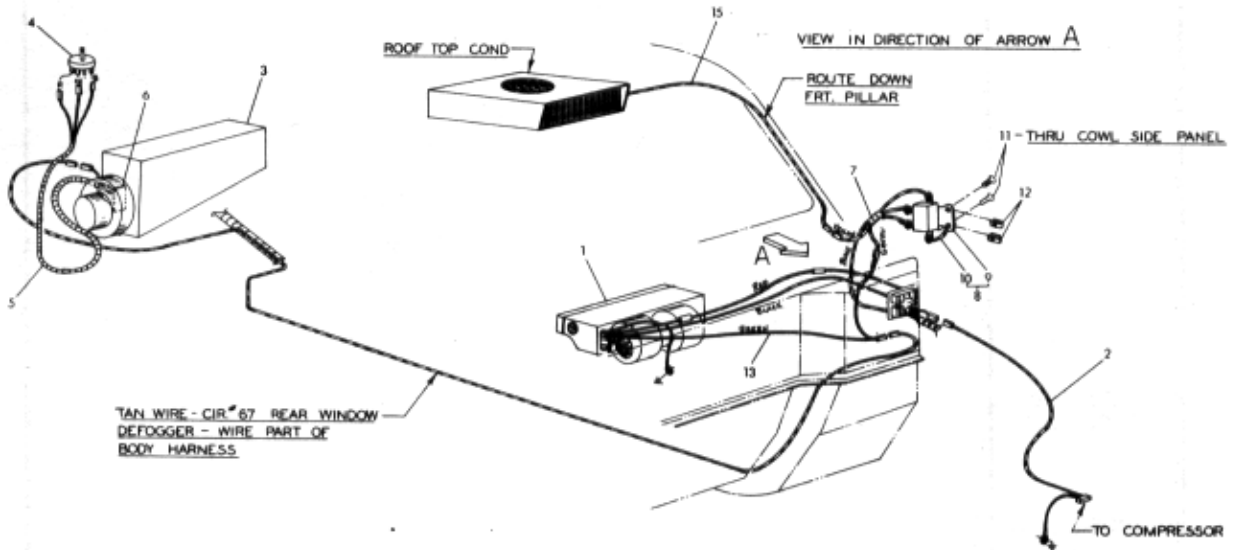
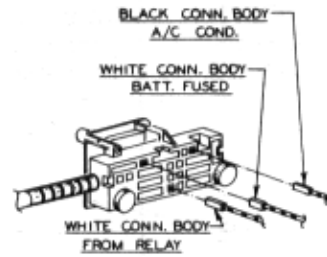
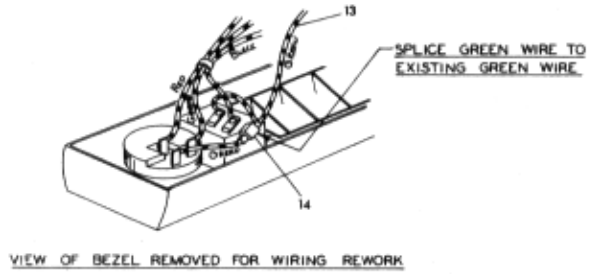


Figure 32-17 Dual Air Conditioning With Roof Top Condenser Wiring

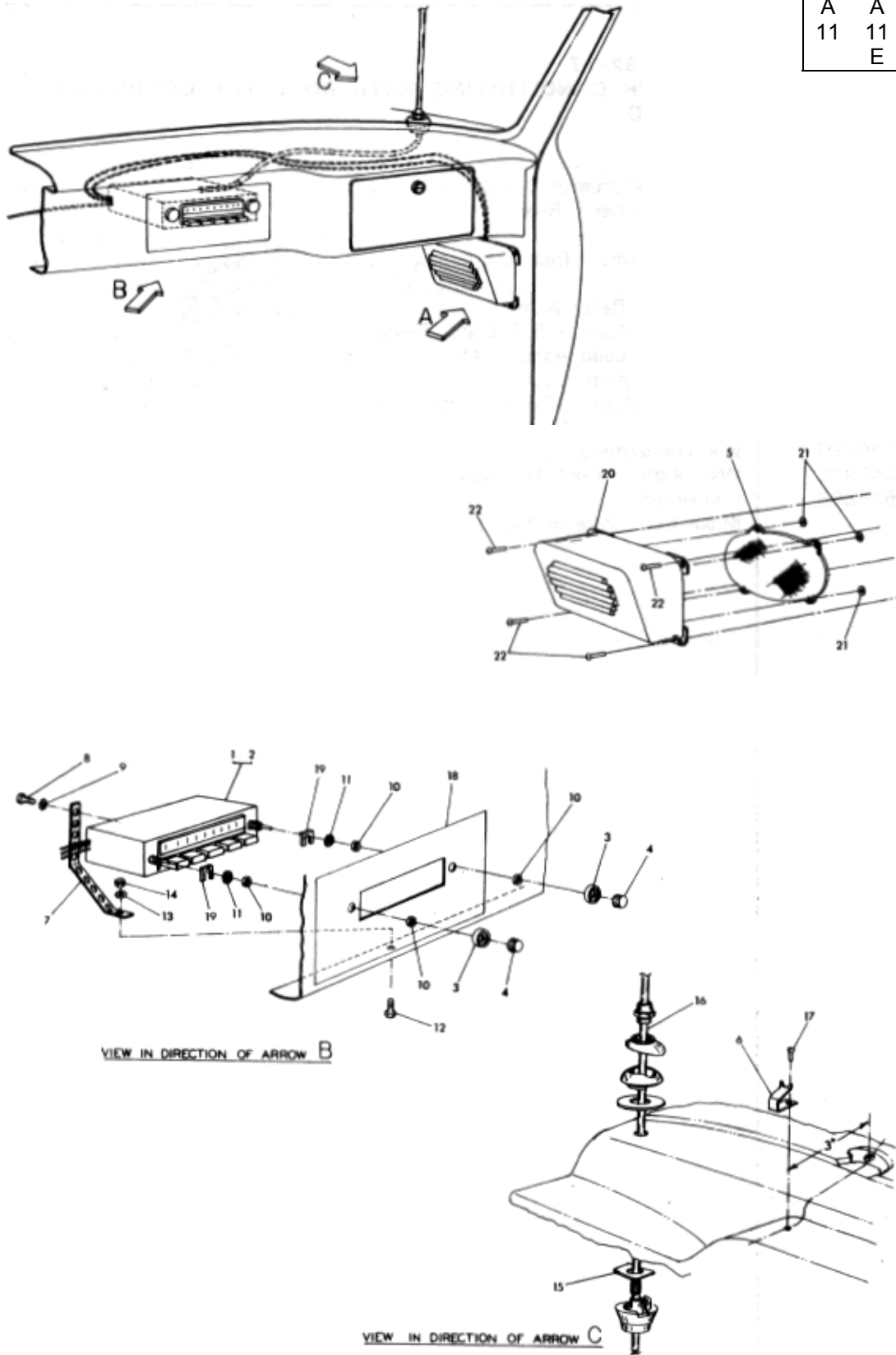


## GROUP 32 - ACCESSORIES 32-25

Item	Part Number	Description	Qty
		Figure 32-17 DUAL AIR CONDITIONING WITH ROOF TOP CONDENSER WIRING	
1	653063	Evaporator	1
2	703595	Wire - Compressor 8 Cyl	1
3	651584	Air Conditioner - Rear	1
4	639570	Switch	1
5	651595	Harness Asm. - Rear Evaporator	1
6	647035	Resistor	1
	653070	Harness & Relay Asm	1
7	653071	Harness Asm. - R/T Cond. Relay	1
8	651848	Relay & Lead Asm. - A/C	1
9	651837	Relay Asm	1
10	635279	Lead Asm. - Relay Cluster	1
11	626898	Screw (#8 X 3/4)	2
12	626894	Nut (Tinnerman)	2
13	647902	Wire Asm. - Roof Top Condenser Fan Control - Dual	1
14	626886	Connector	1
15		Make from Wire in Kit	1

**GROUP 32 - ACCESSORIES 32-26**

A	A	A	A
11	11	12	12
	E		E



*Figure 32-18 Radio and Antenna Installation*

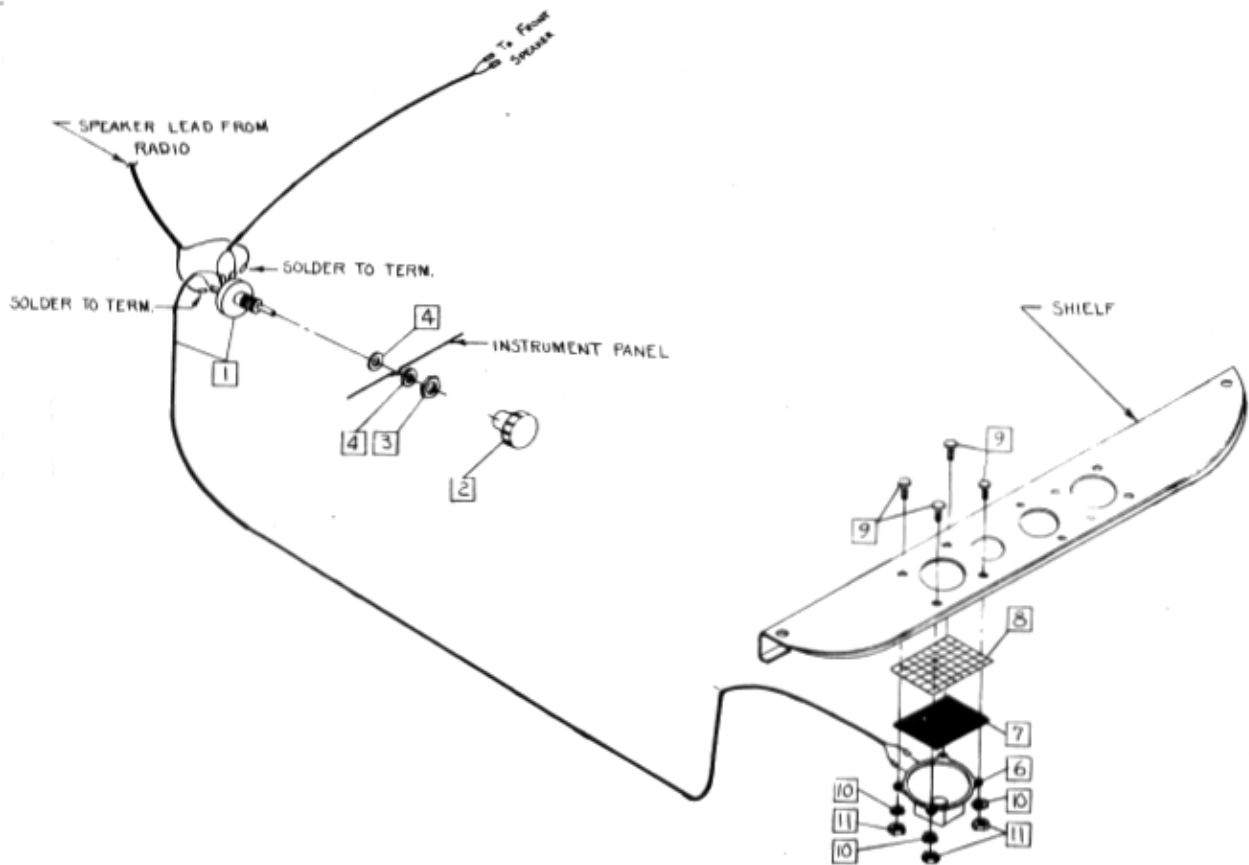
**Checker Motors Corp.**

## GROUP 32 - ACCESSORIES 32-27

Item	Part Number	Description	Qty
		Figure 32-18 RADIO AND ANTENNA INSTALLATION	
	653141	Kit - Radio - AM	1
	653144	Kit - Radio - AM/FM	1
1	653142	Radio - AM	1
2	653145	Radio - AM/FM	1
3	646934	Knob - Local/Distant - Tone	2
4	646935	Knob - Manual Tone - Volume	2
5	653143	Speaker - 4 Ohm	4
6	634952	Clip - Ground - Hood to Cowl	1
7	646938	Strap - Radio Mounting	1
	04967	Kit - Mounting Hardware	1
8	NSS	Bolt (M5 X .8 X 3/8 Hex Metric)	1
9	NSS	Lockwasher	1
10	NSS	Nut (M9 X .75 Hex Metric)	4
11	NSS	Washer - Flat	4
12	NSS	Bolt (3/4 Lg. Hex)	1
13	NSS	Lockwasher	1
14	NSS	Nut-Hex	1
15	634699	Reinforcement - Cowl Mt. Antenna	1
16	651966	Antenna	1
17	626612	Screw (#8 X 5/8 OHCR)	1
18	646932	Panel - Radio Mounting	1
19	636340	Spacer (3/16 Thk)	2
20	646398	Housing - Speaker	1
21	626409	Nut (3/16 Push On)	4
22	161909	Screw (#10 X 1 RHCR)	4

**GROUP 32 - ACCESSORIES 32-28**

A	A	A	A
11	11	12	12
	E		E



*Figure 32-19 Radio Speaker - Rear Mounted*

## GROUP 32 - ACCESSORIES 32-29

Item	Part Number	Description	Qty
		Figure 32-19	
		RADIO SPEAKER - REAR MOUNTED	
	645515	Kit - Speaker Control & Cable Asm	1
1	NSS	Cont. & Cable Asm. - Rear Speaker	1
2	NSS	Knob - Rear Speaker Control	1
3	NSS	Nut - Rear Speaker Control Mt	1
4	NSS	Washer - Rear Speaker Control Mounting	2
6	653143	Speaker Asm	1
7	642025	Screen - Shelf Panel	1
8	646603	Grille - Rear Seat Speaker	1
9	626537	Screw (#10-32 X 5/8)	4
10	138479	Lockwasher (#10 Ext. Tooth)	4
11	120614	Nut (#10-32 Hex)	4
	646516	Label - Speaker Control	1
		Section 32-20	
		ANTENNA ASSEMBLY - TWO WAY RADIO	
	645475	Antenna & Lead Asm	1
	92903	Lead - Coaxial Cable	1
		Section 32-21	
		CONDUIT - TWO WAY RADIO	
	95383	Hose Asm. - Gray Conduit - 120" WB	1
	701299	Hose Asm. - Gray Conduit - 129" WB	1
	95384	Fitting - Straight	1
	95385	Fitting - Elbow	1
	94854	Clamp - Hose Mounting	3
	178434	Screw - Hose Clamp Mounting (1/4-14 X1/2)	3

GROUP 32 - ACCESSORIES 32-30

A	A	A	A
11	11	12	12
	E		E

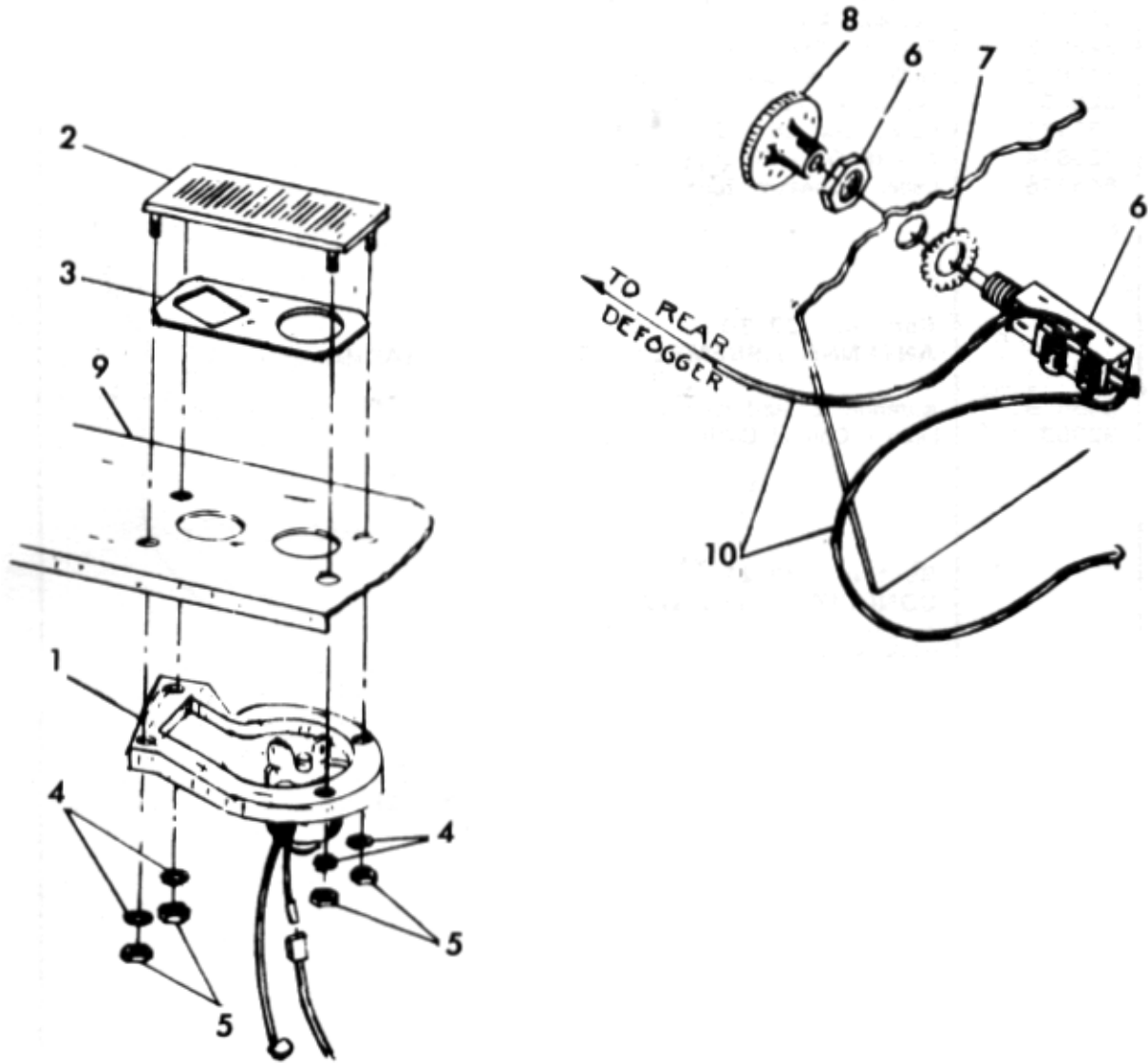


Figure 32-22 Defogger - Rear Window

## GROUP 32 - ACCESSORIES 32-31

Item	Part Number	Description	Qty
Figure 32-22			
DEFOGGER - REAR WINDOW			
1	647510	Blower Asm. - Rear Window Defogger	1
2	647509	Grille Asm. - Air Outlet	1
3	646281	Cover - Hole Trim	1
4	121752	Lockwasher (#8 Ext. Tooth)	4
5	120622	Nut (#8-32 Hex)	4
6	635534	Switch & Nut Asm. - Rear Window Defogger	1
7	136857	Lockwasher (7/16 Ext. Tooth)	1
8	631960	Knob & Screw Asm. - Switch	1
	646515	Label - Defogger	1
9		Panel - Shelf Trim - Group 29 Page 10	1
10	647978	Harness Asm. - Rear Defogger Switch to Body Harness & Circuit Breaker	
		Holder Asm. Accessory Fused Terminal	1
	80361	Clip - Harness to Shelf Panel	1
	626456	Screw & Lockwasher Asm. Clip Mounting & Blower Ground Wire Mounting	1
Section 32-23			
HEATER - UNDERSEAT FLOOR MOUNTED			
	641279	Heater & Deflector Asm	1
	637188	Heater Asm	1
	03791	Cover - Top	1
	03792	Cover - Bottom	1
	03793	Screw - Cover Mounting	2
	03795	Core Asm	1
	03790	Motor	1
	03799	Pad	4
	03798	Fan Asm. - Motor	1
	03794	Set Screw - Motor Fan	1
	636797	Deflector	4
	640034	Retainer - Deflector	4
	636794	Gasket - Floor Mounted Heater	4
	121743	Nut - Heater Asm. Mounting (#12-24 Hex)	2
	125751	Lockwasher - Heater Asm. Mounting (#12 Ext. Tooth)	2
	635534	Switch Asm. - Floor Mounted Heater	1
	05292	Nut - Auxiliary Heater Switch Mt	1
	631960	Knob & Screw Asm. - Heater Switch	1
	646514	Label - Auxiliary Heater	1
	651653	Wire Asm. - Feeder - U/S Htr. Sw	1
	639048	Cable Asm. - Floor Mt. Htr. - Frt	1

**GROUP 32 - ACCESSORIES 32-32**

A	A	A	A
11	11	12	12
	E		E

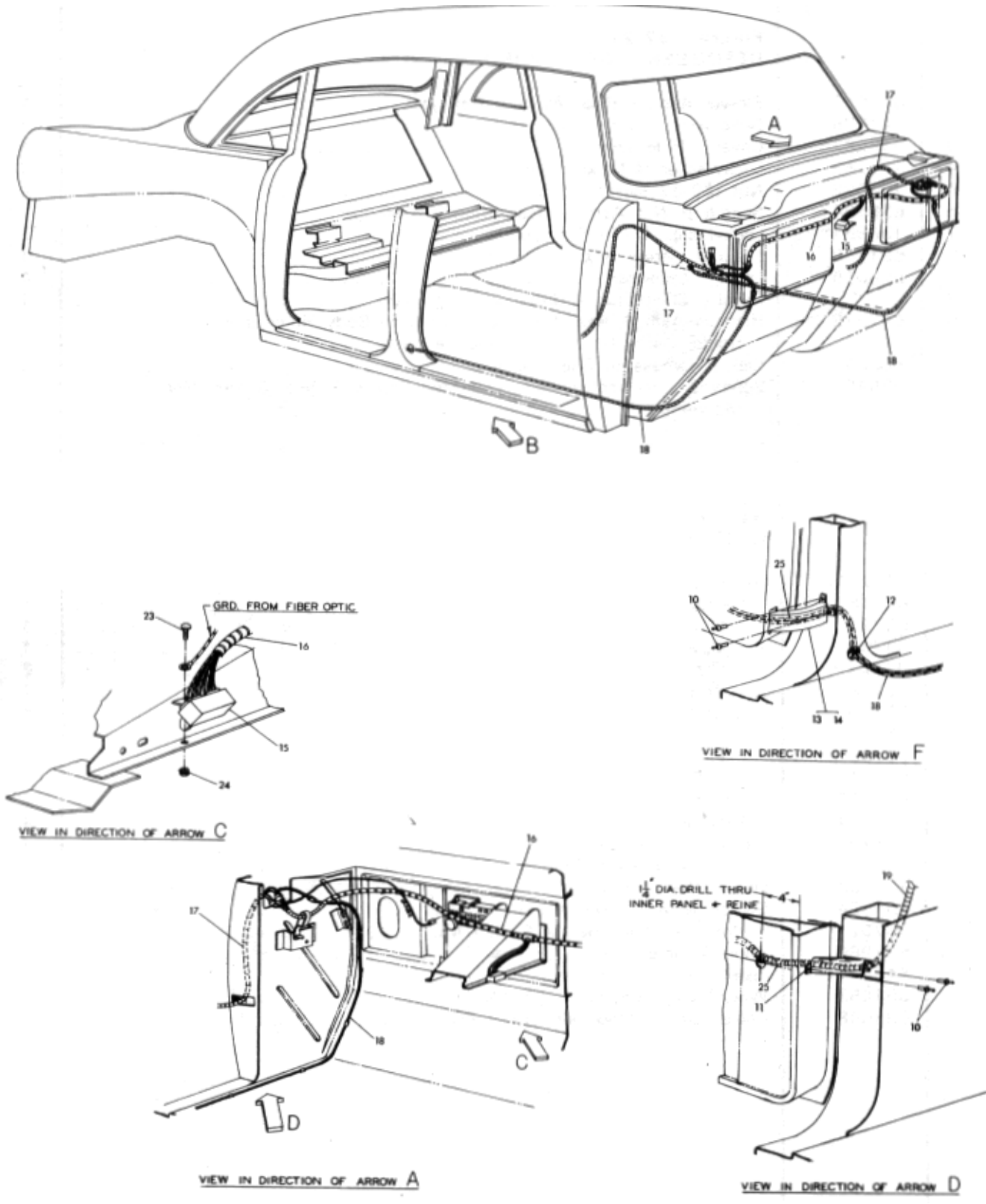


Figure 32-24 Power Door Locks .Electric

**Checker Motors Corp.**



## GROUP 32 - ACCESSORIES 32-33

Item	Part Number	Description	Qty
Figure 32-24			
POWER DOOR LOCKS - ELECTRIC			
1	653137	Actuator & Bracket Asm. - LH	2
2	653138	Actuator & Bracket Asm. - RH	2
3	653139	Actuator Asm. - LH	2
4	653140	Actuator Asm. - RH	2
5	646930	Bracket - Actuator Mounting	4
6	626923	Rivet (1/4 Blind)	A/A
7	646931	Rod - Actuator to Lock	4
8	131015	Washer (3/16 ID X 7/16 00)	A/R
9	626485	Nut (5-32 Self Thrd.)	A/R
10	626642	Rivet (3/16 Dia. Pop)	A/R
11	640052	Conduit - Front Door	2
12	626807	Bushing - Heyco	2
13	640053	Conduit - Center Pillar - LH	1
14	640054	Conduit - Center Pillar - RH	1
15	653179	Relay Asm. - Elec. Door Lock	1
16	653180	Harness Asm. - Electric Door Lock Center	1
17	653181	Harness Asm. - Electric Door Lock Switch	1
18	653182	Harness Asm. - Electric Door Lock Motor	1
19	653351	Switch Asm. - Electric Door Lock	1
20	648212	Reinforcement - Front Door Electric Lock Switch	1
21	653208	Ext. Asm. - Actuator Harness	1
22	626485	Nut (5/32 Self Thrd.)	1
23	273513	Screw & Lockwasher Asm. (10-24 X 1/2)	1
24	120361	Nut (10-24 Hex)	1
25	646972	Flexible Guard Convoluted Conduit	3

**GROUP 32 - ACCESSORIES 32-34**

A	A	A	A
11	11	12	12
	E		E

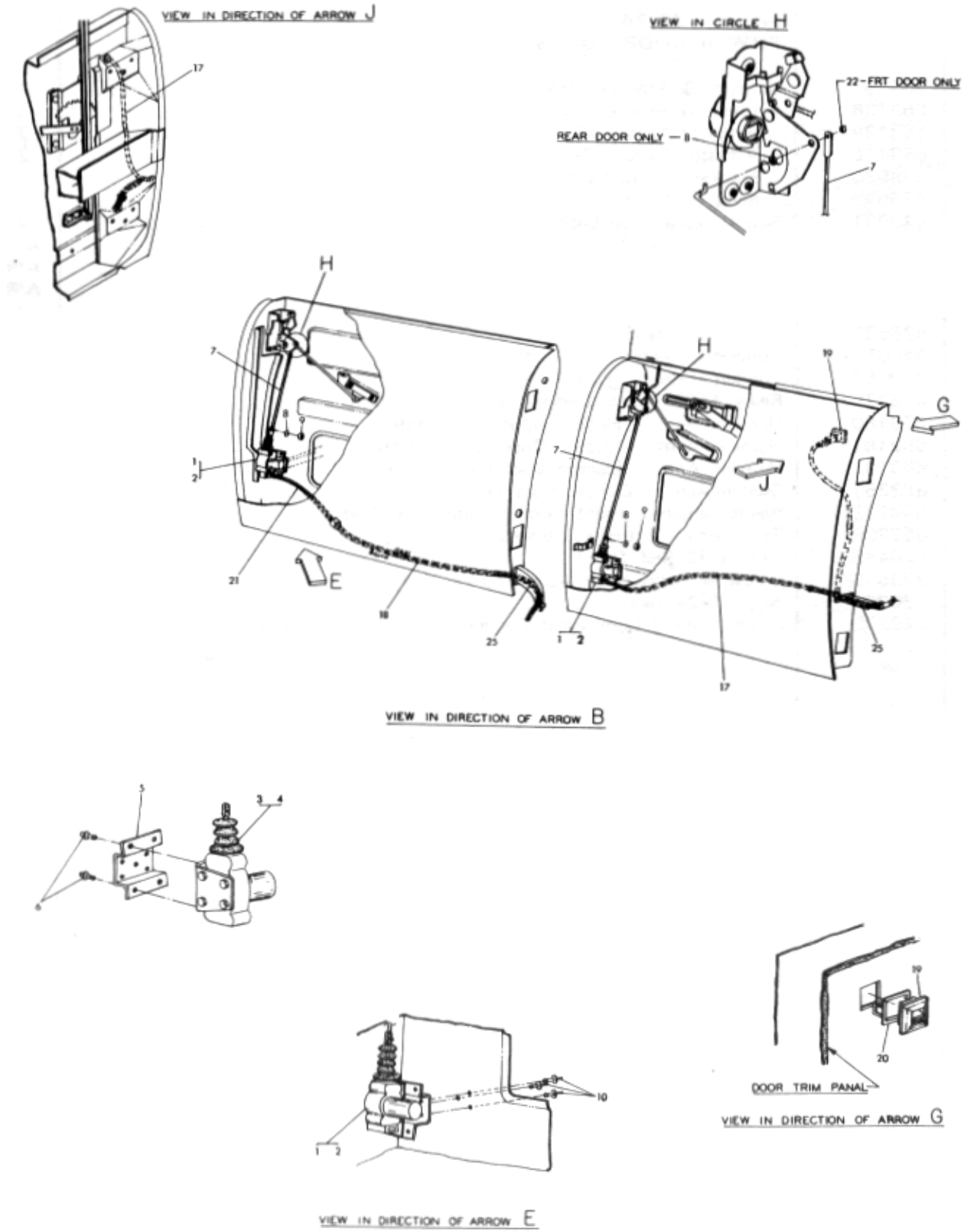


Figure 32-25 Power Door Locks Electric (Continued)

## GROUP 32 - ACCESSORIES 32-35

Item	Part Number	Description	Qty
Figure 32-25			
POWER DOOR LOCKS - ELECTRIC (Continued)			
1	653137	Actuator & Bracket Asm. - LH	2
2	653138	Actuator & Bracket Asm. - RH	2
3	653139	Actuator Asm. - LH	2
4	653140	Actuator Asm. - RH	2
5	646930	Bracket - Actuator Mounting	4
6	626923	Rivet (1/4 Blind)	A/R
7	646931	Rod - Actuator to Lock	4
8	131015	Washer (3/16 ID X 7/16 OD)	A/R
9	626485	Nut (5/32 Self Thrd.)	A/R
10	626642	Rivet (3/16 Dia. Pop)	A/R
11	640052	Conduit - Front Door	2
12	626807	Bushing - Heyco	2
13	640053	Conduit - Center Pillar - LH	1
14	640054	Conduit - Center Pillar - RH	1
15	653179	Relay Asm. - Elec. Door Lock	1
16	653180	Harness Asm. - Electric Door Lock Center	1
17	653181	Harness Asm. - Electric Door Lock Switch	1
18	653182	Harness Asm. - Electric Door Lock Motor	1
19	653351	Switch Asm. - Elec. Door Lock	1
20	648212	Reinforcement - Front Door Electric Lock Switch	1
21	653208	Ext. Asm. - Actuator Harness	1
22	626485	Nut (5/32 Self Thrd.)	1
23	273513	Screw & Lockwasher Asm. (10-24 X 1/2)	1
24	120361	Nut (10-24 Hex)	1
25	646972	Flexible Guard Convolutd Conduit	3

## GROUP 32 - ACCESSORIES 32-36

Item	Part Number	Description	Qty
		Section 32-26	
		DRIVER'S CONTROL - REAR DOOR	
	639161	Control Asm. - Door Remote - LH	1
	639162	Control Asm. - Door Remote - RH	1
	187987	Screw & LW Asm. - Remote Control to Door (12-24 X 1/2 RHCR)	4
	640031	Rod - Rear Lock to Driver's Control - 120" WB	2
	640040	Tubing - Control Rod Insulator - 120" WB	2
	642230	Rod - Rear Lock to Driver's Control - 129" WB	2
	642219	Tubing - Control Rod Insulator - 129" WB	2
	626485	Nut - Rod to Remote & Lock (5/32)	2
	639234	Handle Asm. - Rear Door Driver's Control	2
	640130	Clip - Handle Retaining	2
	640170	Washer - Inside Door Handle - Nylon	2
	640096	Spring - Inside Door Handle - Tension	2
	642809	Seal - Door Regulator & Remote Control	2
		Section 32-27	
		MIRROR ASM. - OUTSIDE REARVIEW RECTANGULAR	
	651668	Mirror Asm. - Outside Rearview	1
	05219	Head & Glass Asm	1
		Section 32-28	
		MOLDINGS - FENDER & DOOR SIDE	
	646665	Molding - Front Fender 2	
	646666	Molding - Front Door Side	2
	646667	Molding - Rear Door - 120" WB	2
	646668	Molding - Rear Fender	2
	646669	Molding - Rear Door - 129" WB	2
		Section 32-29	
		SPOTLIGHT ASSEMBLY	
	631950	Spotlight - Side Mounting	1
	4435	Sealed Beam - Spotlight	1
		Section 32-30	
		VINYL ROOF	
	645917	Cover Asm- 120" WB	1
	645918	Cover Asm- 129" WB - Standard On A12E	1
	647963	Cover Asm- 120" WB - Without Quarter Window	1
	647964	Cover Asm- 129" WB - Without Quarter Window	1
	MA-i 37	Cement	A/R
	ML-105	Sealant - RTV Silicone Rubber	A/R