

GROUP 26 - FRONT EXTERIOR - 26-1

Group 26

FRONT EXTERIOR

Contents

Title	Section	Page
Front Splash Panel Installation	26-1	26-2
Grille Panel Installation	26-2	26-2
Hood Lock, Safety Latch and Hood Release Installation	26-3	26-2
License Plate Bracket Installation	26-4	26-3
Hood, Hood Hinge and Medallion Installation	26-5	26-3
Windshield and Weatherseal Installation	26-6	26-3
Drip Molding - Front Pillar	26-7	26-3
Fender Installation - Front	26-8	26-4
Front Fender Mounting	26-9	26-6
Windshield Wiper & Washer Installation	26-10	26-8
Windshield Wiper Motor Assembly	26-11	26-10

GROUP 26 - FRONT EXTERIOR - 26-2

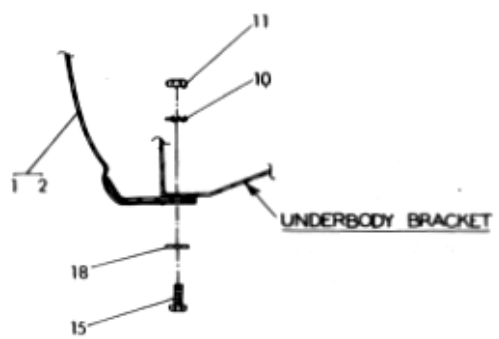
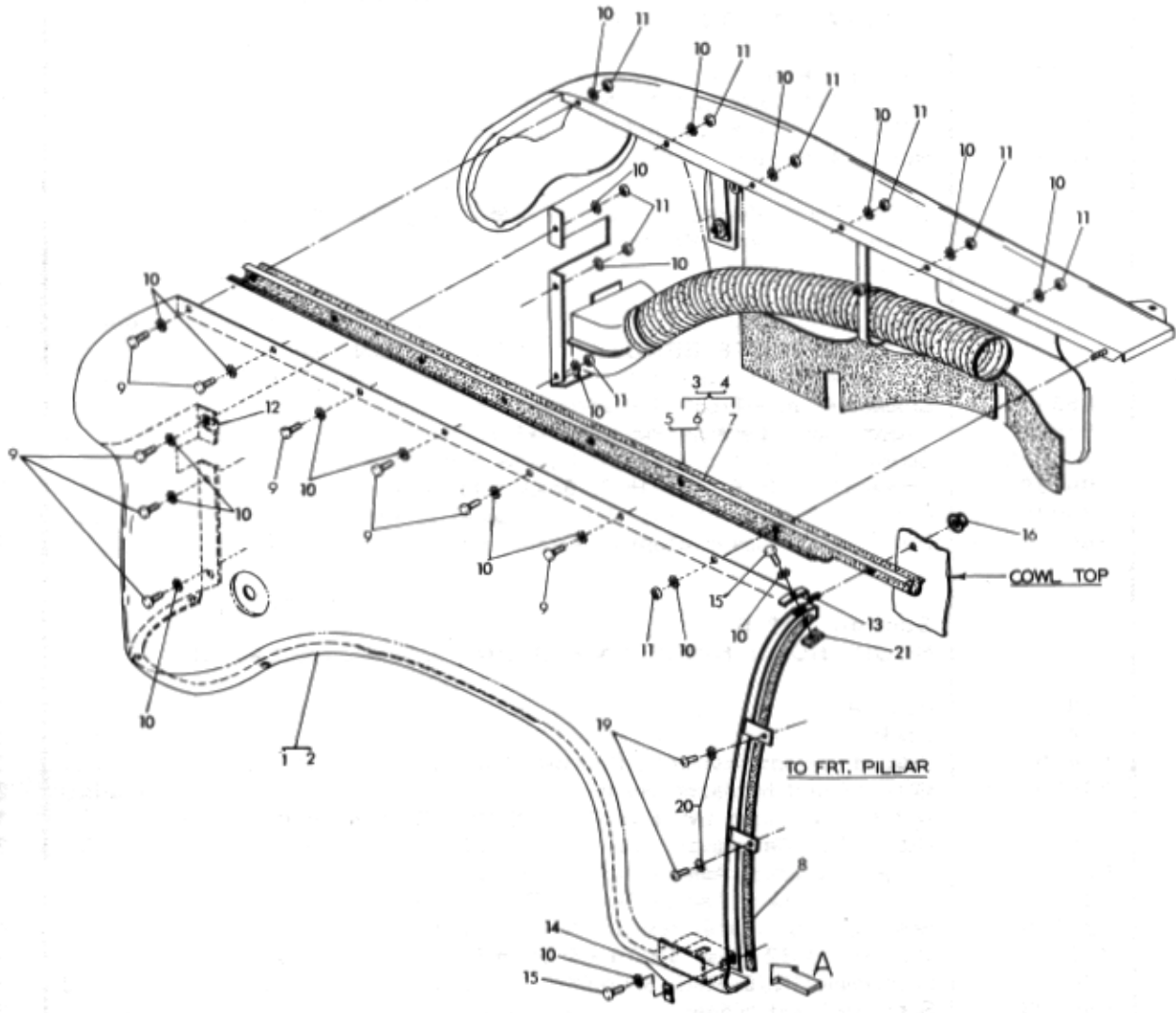
Item	Part Number	Description	Qty
		Section 26-1	
		FRONT SPLASH PANEL INSTALLATION	
	653149	Panel Asm. - Sight Shield - Front	1
	646878	Gasket - Sight Shield	1
	626642	Rivet (3/16 Dia. Pop)Sight Shield to Bumper Brackets	8
	626642	Rivet (3/16 Dia. Pop)Sight Shield to Bumper	2
	653184	Extension & Panel Asm. - Front Splash	1
	646679	Panel - Front Splash	1
	646946	Extension - Front Splash	1
	640174	Seal - Fender to Splash Panel	2
	456695	Screw & Lockwasher Asm. (5/16-18 X 3/4 Hex) Splash Panel to Inner Fender	4
	456695	Screw & Lockwasher Asm. (5/16-18 X 3/4 Hex) Outer Fender to Splash Panel	2
	273802	Nut (5/16-18 Ser. Hex) Splash Panel to Inner Fender	4
	273802	Nut (5/16-18 Ser. Hex) Outer Fender to Splash Panel	2
	274473	Screw (1/4-20 X 5/8 Ser. Hex) Splash Panel to Radiator Support	2
		Section 26-2	
		GRILLE PANEL INSTALLATION	
	646646	Grille - Painted	1
	646729	Grille - Chrome	1
	634125	Gasket - Grille Mounting Side	2
	646680	Bracket - Grille Mounting - Lower	1
	120854	Bolt (1/4-20 X 5/8 Hex) Grille Bracket to Splash Panel	1
	174916	Lockwasher (1/4 Int. Ext. Tooth) Grille Bracket to Splash Panel	1
	271172	Nut & Ext. Tooth LW (1/4-20 Hex) Grille Bracket to Splash Panel	1
	120380	Lockwasher (1/4 Med. Spring) Grille to Lower Mounting Bracket	1
	120380	Lockwasher (1/4 Med. Spring) Grille Top to Radiator Support	2
	120380	Lockwasher (1/4 Med. Spring) Grille Side to Fender	4
	120375	Nut (1/4-20 Hex) Grille to Lower Mounting Bracket	1
	120375	Nut (1/4-20 Hex) Grille Side to Fender	4
	626322	Washer (5/16 ID X 7/8 OD X .065) Grille Top to Radiator Support	2
	626322	Washer (5/16 ID X 7/8 OD X .065) Grille Side to Fender	4
	626771	Screw (1/4-20 X 1 1/2 OHCR) Grille Side to Fender	4
	121900	Bolt (1/4-20 X 1 Hex) Grille Top to Radiator Support	2
	189129	Screw (1/4-20 X 5/8 THCR) Grille to Lower Mounting Bracket	1
	625242	Bumper - Hood	4
		Section 26-3	
		HOOD LOCK, SAFETY LATCH AND HOOD RELEASE INSTALLATION	
	651616	Lock Asm. - Hood Release	1
	456695	Screw & Lockwasher Asm. (5/16-18 X 3/4 Hex) Hood Lock Mounting	3
	647667	Latch Asm. - Hood Safety	1
	446363	Washer (3/8 ID X 7/8 OD) Safety Latch to Mounting Plate	2
	273802	Nut (5/16-18 Ser. Hex) Safety Latch to Mounting Plate	2
	646417	Plate - Hood Lock Mounting	1
	273867	Screw (5/16-18 X 1/2 Hex Ser. Wa. Hd.) Hood Lock Mounting Plate to Radiator Support	2
	138485	Lockwasher (5/16 Ext. Tooth) Hood Lock Mounting Plate to Radiator Support	2
	640288	Bracket - Hood Lock Release Spring	1
	640290	Spring - Hood Lock Release	1

GROUP 26 - FRONT EXTERIOR - 26-3

Item	Part Number	Description	Qty
		Section 26-3	
		HOOD LOCK, SAFETY LATCH AND HOOD RELEASE INSTALLATION (Cont'd)	
	640287	Bumper - Hood Lock Release	1
	189129	Screw (1/4-20 X 5/8 THCR)	2
	174916	LW (1/4 Int. Ext. Tooth)*	2
	120375	Nut (1/4-20 Hex)	2
		(Above Parts Marked * Hood Lock Mounting Plate & Hood Release Bracket to Grille Mounting)	
		Section 26-4	
		LICENSE PLATE BRACKET INSTALLATION	
	705312	Bracket Asm. - Front License Plate	1
	704682	Grommet - License Plate Bracket	2
	9425830	Screw (1/4-14 X 5/8 THCR) License Plate Mounting	2
	189129	Screw (1/4-20 X 5/8 THCR) Bracket to Grille	2
	174916	Lockwasher (1/4 Int. Ext. Tooth) Bracket to Grille	2
	98446	Nut (1/4-20 Elastic Stop) Bracket to Grille	2
		Section 26-5	
		HOOD, HOOD HINGE AND MEDALLION INSTALLATION	
	653284	Hood Asm	1
	634279	Insulation	1
	644551	Bracket - Hood Insulation Retainer Wire	1
	644552	Wire - Hood Insulation Retainer	2
	271172	Nut & Ext. Tooth LW (1/4-20 Hex) Wire Retainer Bracket to Hood	1
	626797	Clip - Wire Retaining	2
	631353	Hinge & Bracket Asm. - Hood - LH	1
	631354	Hinge & Bracket Asm. - Hood - RH	1
	180120	Bolt (3/8-16 X 3/4 Hex Hd.)	4
	120394	Washer 13/32 ID X 13/16 OD Plain)	4
	120382	Lockwasher (3/8 Med. Spring)	4
	630603	Spring - Hood Hinge	2
	638083	Medallion - Hood	1
	105450	Gasket - Medallion Studs	2
	626435	Nut (#8-32 Hex) Medallion to Hood	2
		(Above Marked * Hood Hinge to Cowl Mounting)	
		Section 26-6	
		WINDSHIELD AND WEATHERSEAL INSTALLATION	
	653123	Glass - Windshield - Clear	1
	653124	Glass - Windshield - Tinted	1
	646739	Weatherseal - Windshield	1
		Section 26-7	
		DRIP MOLDING - FRONT PILLAR	
	644463	Molding - Front Pillar Drip	2

GROUP 26 - FRONT EXTERIOR - 26-4

A	A	A	A
11	11	12	12
	E		E



VIEW IN DIRECTION OF ARROW A

Figure 26-8 Fender Installation - Front

GROUP 26 - FRONT EXTERIOR - 26-5

Item	Part Number	Description	Qty
		Figure 26-8 FENDER INSTALLATION – FRONT	
1	651971	Fender - Outer - LH	1
2	651972	Fender - Outer - RH	1
3	641411	Molding & Welt - LH	1
4	641412	Molding & Welt - RH	1
5	640469	Welt - LH	1
6	640470	Welt - RH	1
7	634061	Molding - Fender Top	2
8	634223	Seal	2
	634741	Shim - Front Fender to Pillar	2
9	120854	Bolt (1/4-20 X 5/8 Hex)	18
10	174916	LW (1/4 Int. Ext. Tooth)	44
11	120375	Nut (1/4-20 Hex)	22
12	702611	Clip (5/16 Dbl)	2
13	646807	Plate - Reinforcement - Upper	2
14	646808	Plate - Reinforcement - Lower	2
15	121900	Bolt (1/4-20 X 1 Hex)	6
16	626403	Nut, Washer & Sealer Asm	2
17	274473	Screw (1/4-20 X 5/8 Ser. Hex)	2
18	626322	Washer (5/16 ID X 7/8 OD)	2
19	161895	Screw (#10 X 1/2 PHCR)	4
20	178378	LW (#10 Int. Ext. Tooth)	4
21	647099	Fender - Inner - LH	1
	647100	Fender - Inner - RH	1
22	639181	Ring & Bracket Asm	2
23	630455	Flap - Mud - LH	1
	640576	Flap - Mud - RH	1
24	631295	Duct Asm. - LH	1
	631296	Duct Asm. - RH	1
25	634076	Strap	2
26	651657	Plate Asm. - Reinforcement - LH	1
	651658	Plate Asm. - Reinforcement - RH	1
27	653109	Duct - Fresh Air	2
	640110	Brace - Front Fender	2

GROUP 26 - FRONT EXTERIOR - 26-6

A	A	A	A
11	11	12	12
	E		E

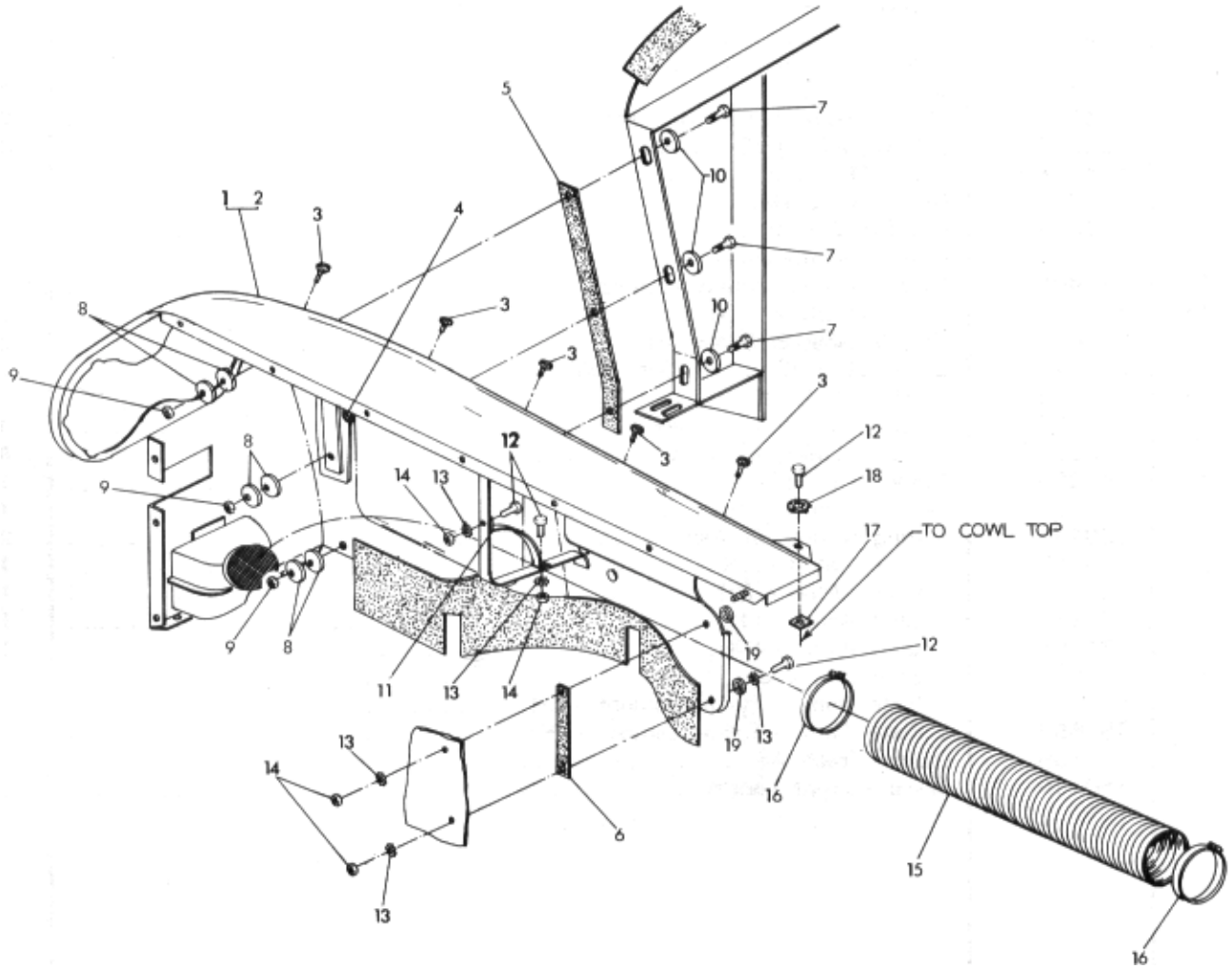


Figure 26-9 Front Fender Mounting

GROUP 26 - FRONT EXTERIOR - 26-7

Item	Part Number	Description	Qty
		Figure 26-9 FRONT FENDER MOUNTING	
1	647099	Fender - Inner - LH	1
2	647100	Fender - Inner - RH	1
3	622595	Bumper	10
4	634104	Grommet	4
5	634227	Seal	2
6	634433	Seal	2
7	181608	Bolt (5/16-24 X 1 Hex)	6
8	626504	Washer (11/32 ID X 1 1/2 CD)	12
9	626851	Nut (5/16-24 Hex Lock)	6
10	446477	Washer (7/16 ID X 1 3/8 OD)	6
11	634075	Clamp - Fresh Air Duct	2
12	121900	Bolt (1/4-20 X 1 Hex)	10
13	174916	Lockwasher(1/4 Int. Ext. Tooth)	12
14	120375	Nut (1/4-20 Hex)	8
15	653109	Duct - Fresh Air	2
16	9422753	Clamp Asm. (4.38" Hose)	4
17	626856	Washer- Sealer	2
18	94751	Lockwasher (1/4 Dome)	2
19	626322	Washer (5/16 ID X 7/8 OD)	4

GROUP 26 - FRONT EXTERIOR - 26-8

A	A	A	A
11	11	12	12
	E		E

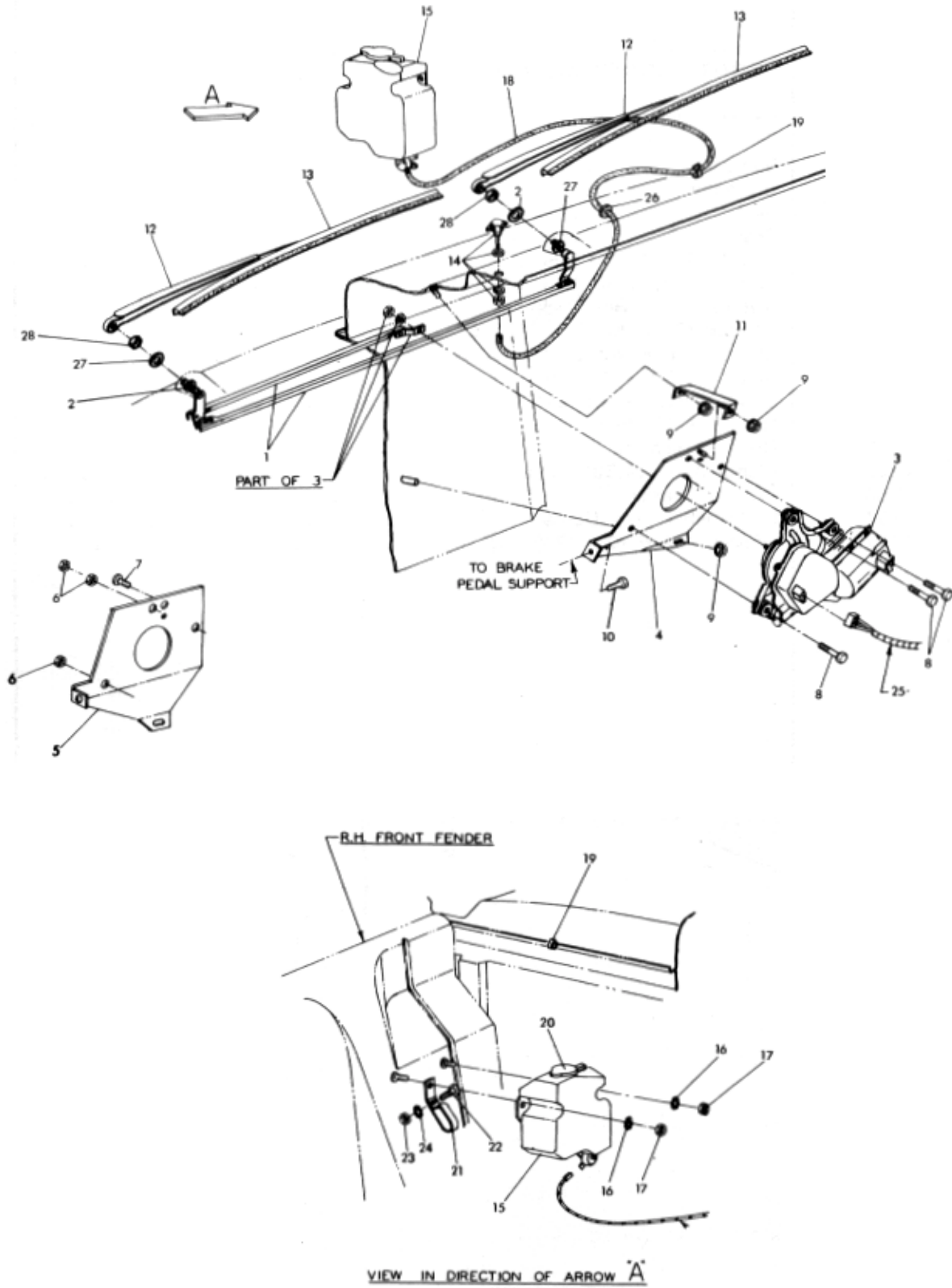


Figure 26-10 Windshield Wiper & Washer Installation

GROUP 26 - FRONT EXTERIOR - 26-9

Item	Part Number	Description	Qty
		Figure 26-10	
		WINDSHIELD WIPER & WASHER INSTALLATION	
1	653270	Transmission Asm. - W/S Wiper	1
2	646983	Gasket - W/S Wiper Transmission to Cowl Top	2
3	653288	Motor Asm. - W/S Wiper	1
4	653271	Bracket & Nut Asm. - Wiper Motor Mounting	1
5	646977	Bracket - Wiper Motor Mounting	1
6	451741	Nut (#10-24 Weld)	3
7	626292	Bolt (1/4-20 X 5/8 Ohio Weld)	1
8	272523	Screw & Lockwasher Asm. (#10-24 X 1 1/8 FHCR)	3
9	626631	Locknut (1/4-20 "Whiz")	3
10	626449	Screw & Lockwasher Asm. (1/4-20 X 1/2)	1
11	646985	Brace - Wiper Motor Mt. Bracket	1
12	653199	Arm Asm. - W/S Wiper Blade	2
13	645516	Blade Asm. - W/S Wiper	2
14	653272	Jet Asm. - Washer	1
15	651816	Reservoir & Pump Asm. W/S Washer	1
16	178378	LW (#10 Int. Ext. Tooth)	2
17	120614	Nut (#10-32 Hex)	2
18	640075	Hose (3/16 X 48)	1
19	626797	Clip - Wire & Clip	1
20	MB-105	Solution - W/S Washer	1
21	646664	Clip - A/C Hoses	1
22	121887	Bolt (1/4-20 X 3/4 Hex)*	1
23	120375	Nut (1/4-20 Hex)*	1
24	174916	LW (1/4 Int. Ext. Tooth)*	1
25	653287	Harness Asm. - W.S Wiper	1
26	634104	Grommet	1
27	646999	Washer - W/S Wiper Trans	2
28	646998	Nut - W/S Wiper Trans	2

(Parts Marked * for Heater Hoses & Battery Positive Cable - 8 Cylinder Only)

GROUP 26 - FRONT EXTERIOR - 26-10

Item	Part Number	Description	Qty
		Section 26-1 1	
		WINDSHIELD WIPER MOTOR ASSEMBLY	
	011931	Wiper Motor Assy. Service for Checker No. 653288	1
	011932	Armature Asm	1
	011933	Thrust Disc	1
	011914	Thrust Plate	1
	011935	End Cap Asm	1
	011936	Crank Arm Asm	1
	011937	Crank Arm Nut	1
	011938	Brush	1
	011939	Brush Spring	1
	011940	Spacer Seal - Bracket	1
	011941	Seal	1
	011942	Spacer & Grommet Asm	1
	011943	Transmission Service Package - LH	1
	011934	Socket Bearing Package	1
	011944	Transmission Service Package - RH	1
	011934	Socket Bearing Package	1