

GROUP 16 - ELECTRICAL CHASSIS 16-1

Group 16

ELECTRICAL CHASSIS

Contents

Title	Section	Page
Starting Motor Assembly, 6 & 8 Cylinder	16-1	16-2
Starting Motor Mounting, 6 Cylinder	16-2	16-4
Starting Motor Mounting, 8 Cylinder	16-3	16-4
Distributor Assembly, 6 Cylinder	16-4	16-6
Distributor Assembly, 8 Cylinder	16-5	16-8
Generator Assembly, 6 & 8 Cylinder	16-6	16-10
Generator Assembly Mounting, 6 Cylinder	16-7	16-12
Generator Assembly Mounting, 8 Cylinder	16-8	16-12
Wiring and Associated Parts, 6 Cylinder	16-9	16-14
Ignition Wires - Spark Plugs, 6 Cylinder	16-10	16-15
Wiring and Associated Parts, 8 Cylinder	16-11	16-16
Ignition Wires - Spark Plugs, 8 Cylinder	16-12	16-17
Battery - Front Mounted, 6 Cylinder	16-13	16-18
Battery - Front Mounted, 8 Cylinder	16-14	16-18
Battery Installation, Rear Mounted, 6 & 8 Cylinder	16-15	16-20
Split Cable Installation, Rear Mounted Battery	16-16	16-20
Shield Assembly - Rear Mounted Battery, 6 & 8 Cylinder - 120 WB	16-17	16-22
Kickdown Switch and Wiring Installation, 6 & 8 Cylinder	16-18	16-22

GROUP 16 - ELECTRICAL CHASSIS 16-2

A	A	A	A
11	11	12	12
	E		E

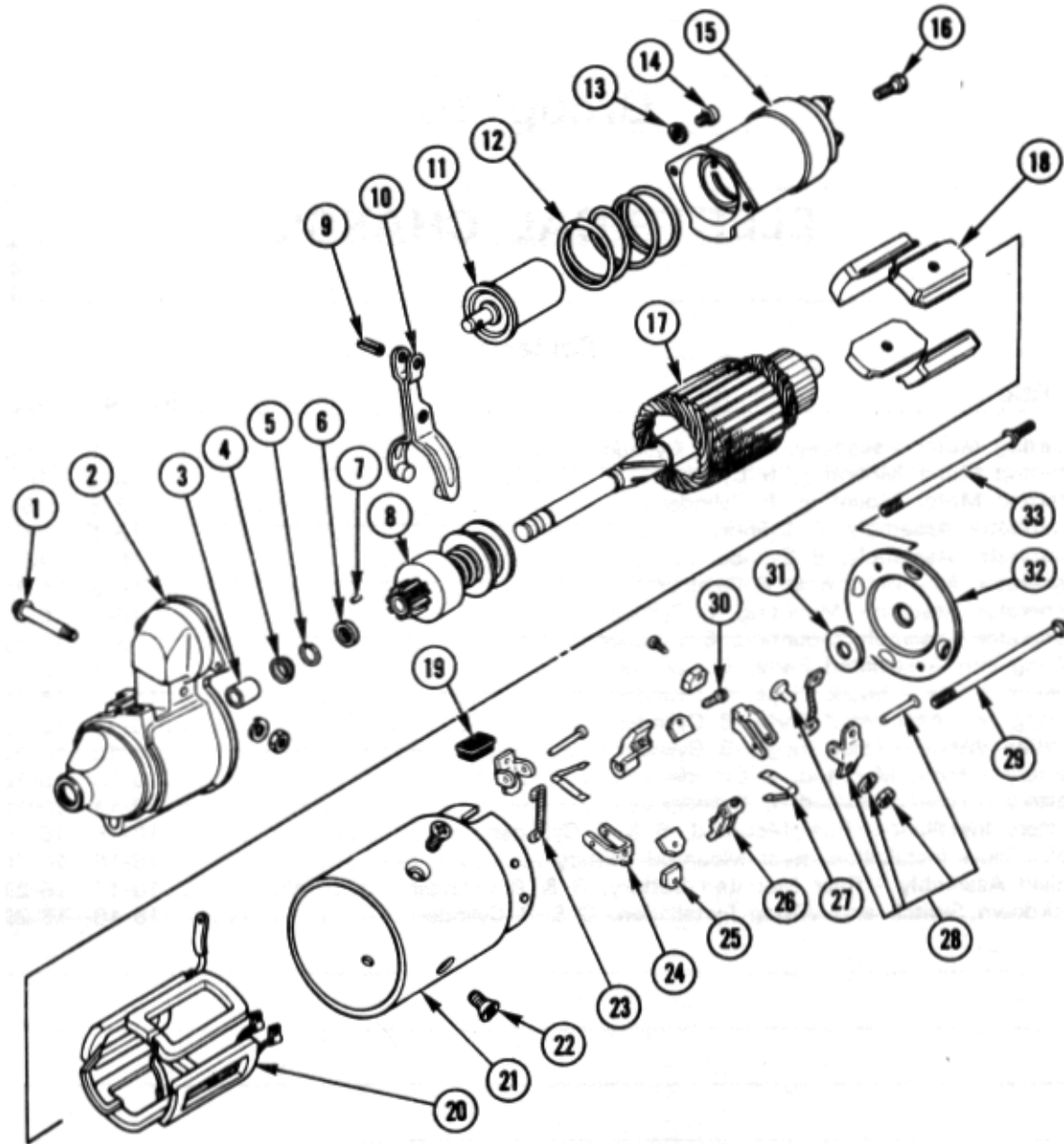


Figure 16-1 Starting Motor Assembly, 6 & 8 Cylinder

Checker Motors Corp.

GROUP 16 - ELECTRICAL CHASSIS 16-3

Item	Part Number	Description	Qty
		Figure 16-1 STARTING MOTOR ASSEMBLY, 6 & 8 CYLINDER	
	705969	MotorAsm. - Starting - 6 Cyl	1
	705970	MotorAsm. - Starting - 8 Cyl	1
1	08581	Stud - Lever	1
2	010488	Housing Asm. - Drive End	1
3	010346	Bushing - Drive End	1
4	08570	Washer	1
5	08569	Ring	1
6	08568	Collar - Thrust	1
7	04249	Pin	1
8	010499	Drive Asm	1
9	012623	Pin - Lever	1
10	010373	Lever - Shaft	1
11	08577	Plunger - W/Link	1
12	08576	Spring - Plunger	1
13	9421423	Lockwasher (1/4")	2
14	9413260	Screw (1/4-20 X 1/2)	2
15	010497	Switch Asm. - Solenoid	1
16	9427815	Screw (#10-32 X 1/2)	1
17	010308	Armature - 6 Cyl	1
	010309	Armature - 8 Cyl	1
18	08657	Shoe - Starter Pole - 6 Cyl	4
	010305	Shoe - Starter Pole - 8 Cyl	4
19	010487	Grommet - Field Frame	1
20	012622	Coil Asm. - 6 Cyl	1
	010446	Coil Asm. - 8 Cyl	1
21	NSS	Frame - Starter	1
22	010374	Screw - Pole Shoe	4
23	010371	Lead - Motor Brush Ground	2
24	08654	Holder - Ground	2
25	04261	Brush	4
26	04264	Holder - Insulated	2
27	04262	Spring - Brush	2
28	04266	Support Unit - Brush Holder	2
29	08586	Bolt - thru - 6 Cylinder	2
	08586	Bolt - thru - 8 Cylinder	1
30	443527	Screw - Ground	2
	08669	Screw - Insulated	2
31	08563	Washer - Commutator End	1
32	010498	Frame - Commutator End	1
33	08559	Bolt - thru (W/Extension) (8 Cyl. Only)	1

GROUP 16 - ELECTRICAL CHASSIS 16-4

A		A	
11		12	

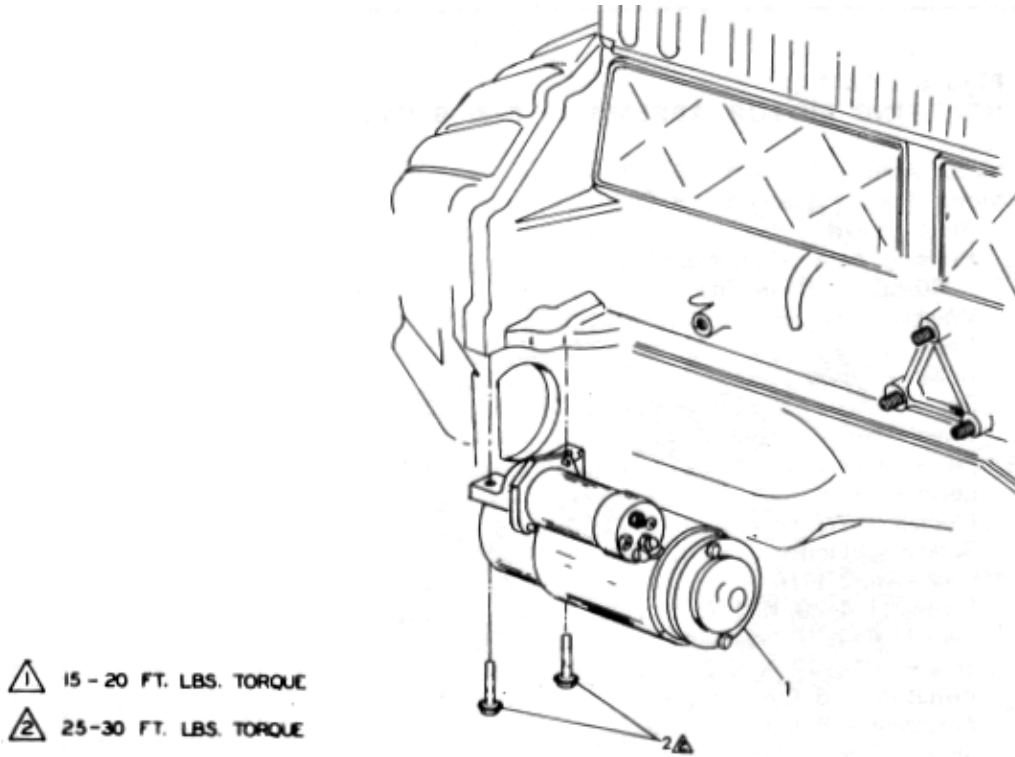


Figure 16-2 Starting Motor Mounting, 6 Cylinder

A	A	A	A
11	11	12	12
	E		E

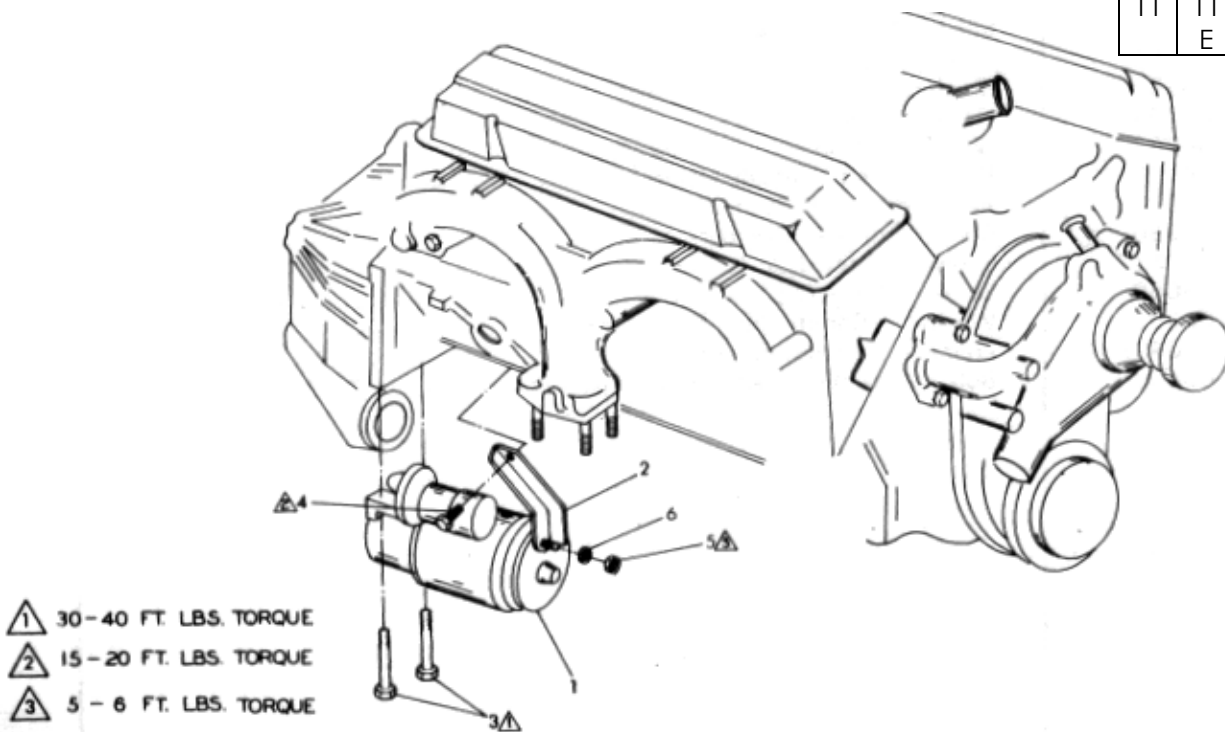


Figure 16-3 Starting Motor Mounting, 8 Cylinder

GROUP 16 - ELECTRICAL CHASSIS 16-5

Item	Part Number	Description	Qty
		Figure 16-2	
		STARTING MOTOR MOUNTING, 6 CYLINDER	
1	705969	Motor Asm. - Starting	1
2	702202	Bolt (3/8-16 X 4 21/32 Hex Wa. Hd.)	2
		Figure 16-3	
		STARTING MOTOR MOUNTING, 8 CYLINDER	
1	705970	Motor Asm. - Starting	1
2	706354	Brace - Mounting	1
3	702202	Bolt (3/8-16 X 4 21/32 Hex)	2
4	273867	Screw (5/16-18 X 1/2 Hex)	1
5	98446	Nut (1/4-20 Hex)	1
6	120392	Washer (9/32 ID X 5/8 OD)	1

GROUP 16 - ELECTRICAL CHASSIS 16-6

A		A	
11		12	

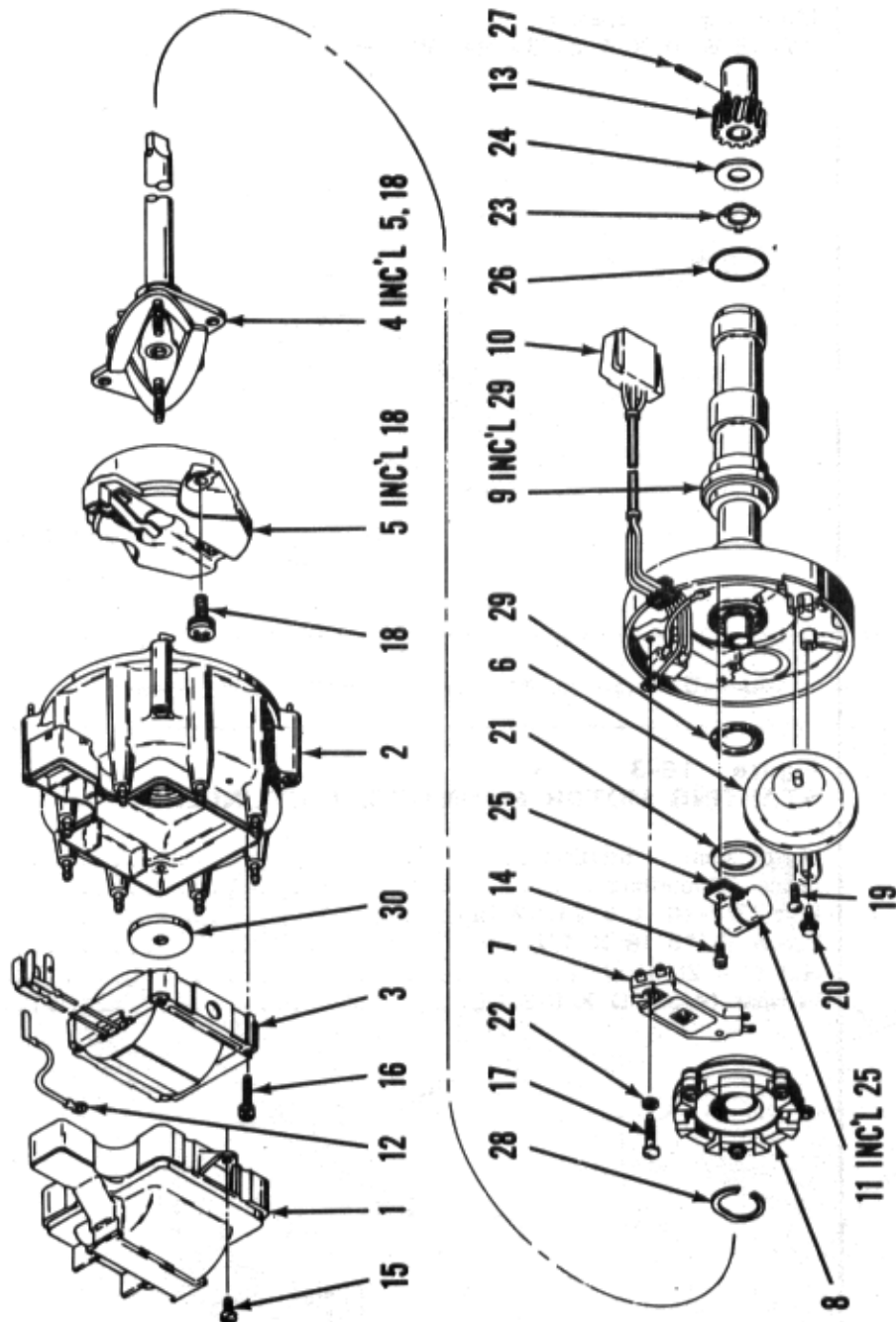


Figure 16-4 Distributor Assembly, 6 Cylinder

GROUP 16 - ELECTRICAL CHASSIS 16-7

Item	Part Number	Description	Qty
		Figure 16-4 DISTRIBUTOR ASSEMBLY. 6 CYLINDER	
	012632	Distributor Asm. - Federal - W/O A/C	1
	012633	Distributor Asm. - California	1
	012634	Distributor Asm. - Federal - W/ A/C	1
1	012635	Cover - Distributor Cap	1
2	012637	Cap - Distributor	1
	010412	Brush - Resistor in Cap	1
3	010408	Coil - Ignition	1
4	012638	Mainshaft Asm	1
5	010480	Rotor	1
6	012639	Vacuum Control W/012632	1
	012640	Vacuum Control W/012633	1
	012641	Vacuum Control W/012634	1
7	010395	Module	1
8	010401	Pole Piece & Plate Asm	1
9	012636	Housing Asm	1
10	012642	Harness - Module to Coil	1
11	010397	Capacitor	1
12	012626	Lead & Terminal Asm. - Ground	1
13	012643	Gear	1
14	010398	Screw & Lockwasher - Capacitor Bracket Attaching	1
15	010406	Screw & Lockwasher - Distributor Cap Cover Attaching	3
16	010409	Screw & Lockwasher - Ignition Coil Attaching	4
17	010396	Screw & Lockwasher - Module Attaching	2
18	010391	Screw & Lockwasher - Rotor Attaching	2
19		Not Applicable	
20	010394	Screw - Vacuum Control Attaching	2
21		Not Applicable	
22		Not Applicable	
23		Not Applicable	
24		Not Applicable	
25	08543	Bracket - Capacitor (Included W/010397 Capacitor)	1
26		Not Applicable	
27	012644	Pin - Gear Attaching	1
	012645	Pin - Lower Shaft Extension	1
28	010402	Retainer - Pole Piece & Plate	1
29	08522	Seal - Distributor Housing (Included W/012636 Housing)	1
30	010410	Seal - Under Ignition Coil	1
	012646	Shaft - Lower Extension	1

GROUP 16 - ELECTRICAL CHASSIS 16-8

A	A	A	A
11	11	12	12
	E		E

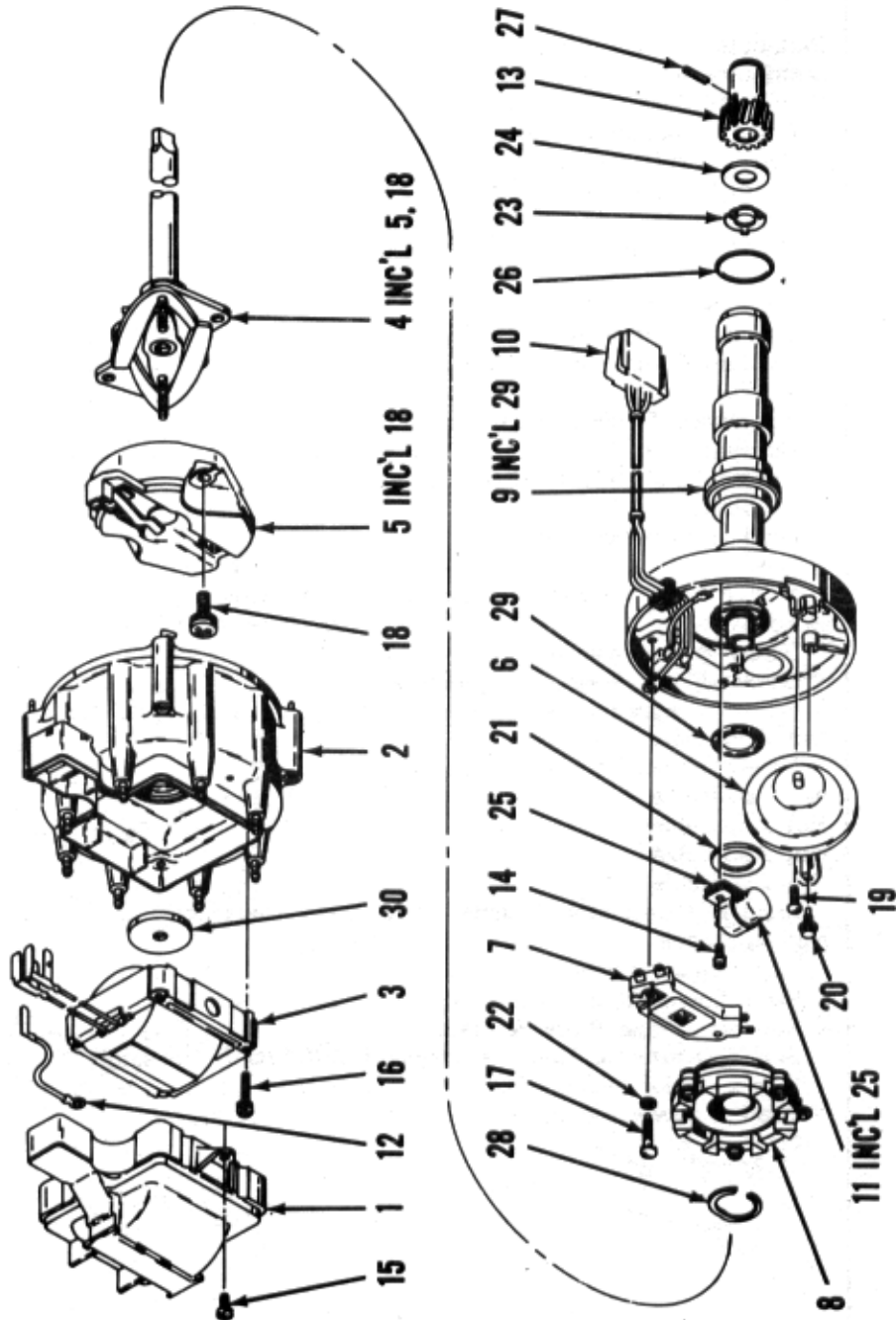


Figure 16-5 Distributor Assembly, 8 Cylinder

GROUP 16 - ELECTRICAL CHASSIS 16-9

Item	Part Number	Description	Qty
		Figure 16-5 DISTRIBUTOR ASSEMBLY. 8 CYLINDER	
	012624	Distributor Asm. - 305	1
	012625	Distributor Asm. - 350	1
1	010405	Cover - Distributor Cap	1
2	012627	Cap - Distributor	1
	010412	Brush - Resistor in Cap	1
3	010408	Coil - Ignition	1
4	012628	Mainshaft Asm. - Complete - 305	1
	012629	Mainshaft Asm. - Complete - 350	1
5	010480	Rotor	1
6	012630	Vacuum Control - 305	1
	012631	Vacuum Control - 350	1
7	010395	Module	1
8	010416	Pole Piece & Plate (Pick-Up Coil)	1
9	010417	Housing - Distributor	1
10	010415	Harness - Module to Coil	1
11	010397	Capacitor	1
12	012626	Lead & Terminal Asm. - Ground	1
13	08638	Gear	1
14	010398	Screw & Lockwasher - Capacitor Bracket Attaching	1
15	010406	Screw - Distributor Cap Cover Attaching	3
16	010409	Screw & Lockwasher - Ignition Coil Attaching	4
17	010396	Screw & Lockwasher - Module Attaching	2
18	010391	Screw & Lockwasher - Rotor Attaching (Included W/0 10480 Rotor)	2
19	010394	Screw & Lockwasher - Vacuum Control Attaching	2
20		Not Applicable	
21	08533	Washer - Felt - Under Pole Piece & Plate	1
22		Not Applicable	
23	08639	Washer - Tang Under Distributor Housing	1
24	08547	Washer - Thrust Under Distributor Housing	1
25	08543	Bracket - Capacitor (Included W/010397 Capacitor)	1
26		Not Applicable	
27	456652	Pin - Gear Attaching	1
28	010402	Retainer - Pole Piece & Plate	1
29	08522	Seal - Distributor Housing (Included W/010417 Housing)	1
30	010410	Seal - Under Ignition Coil	1

GROUP 16 - ELECTRICAL CHASSIS 16-10

A	A	A	A
11	11	12	12
E	E		E

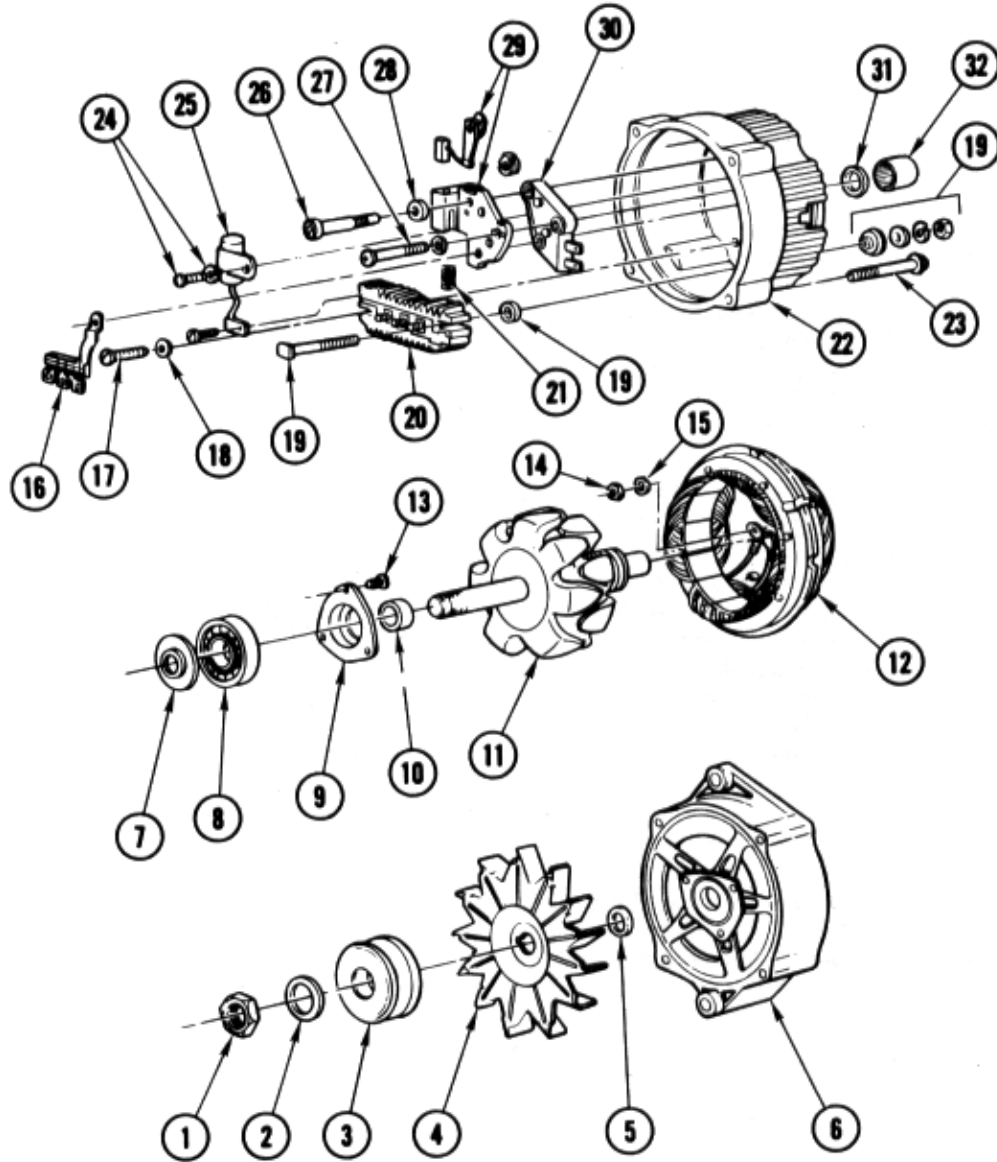


Figure 16-6 Generator Assembly. 6 & 8 Cylinder

GROUP 16 - ELECTRICAL CHASSIS 16-11

Item	Part Number	Description	Qty
		Figure 16-6 GENERATOR ASSEMBLY. 6 & 8 CYLINDER	
	705275	Generator Asm. - 63 Amp Delcotron - 6 Cylinder	1
	705566	Generator Asm. - 63 Amp Delcotron - 8 Cylinder	1
1	010437	Nut - Drive Pulley Attaching	1
2	010436	Lockwasher - Drive Pulley Attaching	1
3	010462	Pulley	1
4	010434	Fan	1
5	010222	Collar - Drive End Frame - Outside	1
6	010422	Frame - Drive End - 6 Cyl	1
	010421	Frame - Drive End - 8 Cyl	1
7	010432	Slinger - Drive End Bearing Grease	1
8	010428	Bearing - Drive End Frame	1
9	010431	Retainer - Drive End Bearing	1
10	010221	Collar - Drive End Frame - Inside	1
11	010419	Rotor Asm	1
12	010420	Stator Asm	1
	010443	Clip - Stator Lead	3
13	010438	Screw - Drive End Bearing Retainer Attaching	3
14	453434	Nut - Rectifier Bridge	3
15	010435	Lockwasher - Rectifier Bridge Nut	3
16	010424	Diode Trio	1
17	010442	Screw & Washer Rectifier Bridge Attaching	1
18	NSS	Use - 010442	1
19	010430	Terminal Package - Battery	1
20	010425	Bridge - Rectifier	1
21	010213	Spring - Brush Holder (Included W/010426)	2
22	010418	Frame - SRE	1
23	010433	Bolt - thru	1
24	010441	Screw & Lockwasher - Capacitor Bracket Attaching & Capacitor Lead to Rectifier Bridge	1
25	010429	Capacitor	1
26	010440	Screw - Brush Holder Attaching Insulated	2
27	010439	Screw - Brush Holder Attaching Ground	1
28	010435	Lockwasher -Brush Holder Attaching Screw	1
29	010426	Brush Holder Asm	1
30	010423	Regulator Asm	1
31	NSS	Use - 010427	1
32	010427	Bearing - SRE (Included in 010418 Frame)	1

GROUP 16 - ELECTRICAL CHASSIS 16-12

A		A	
11		12	

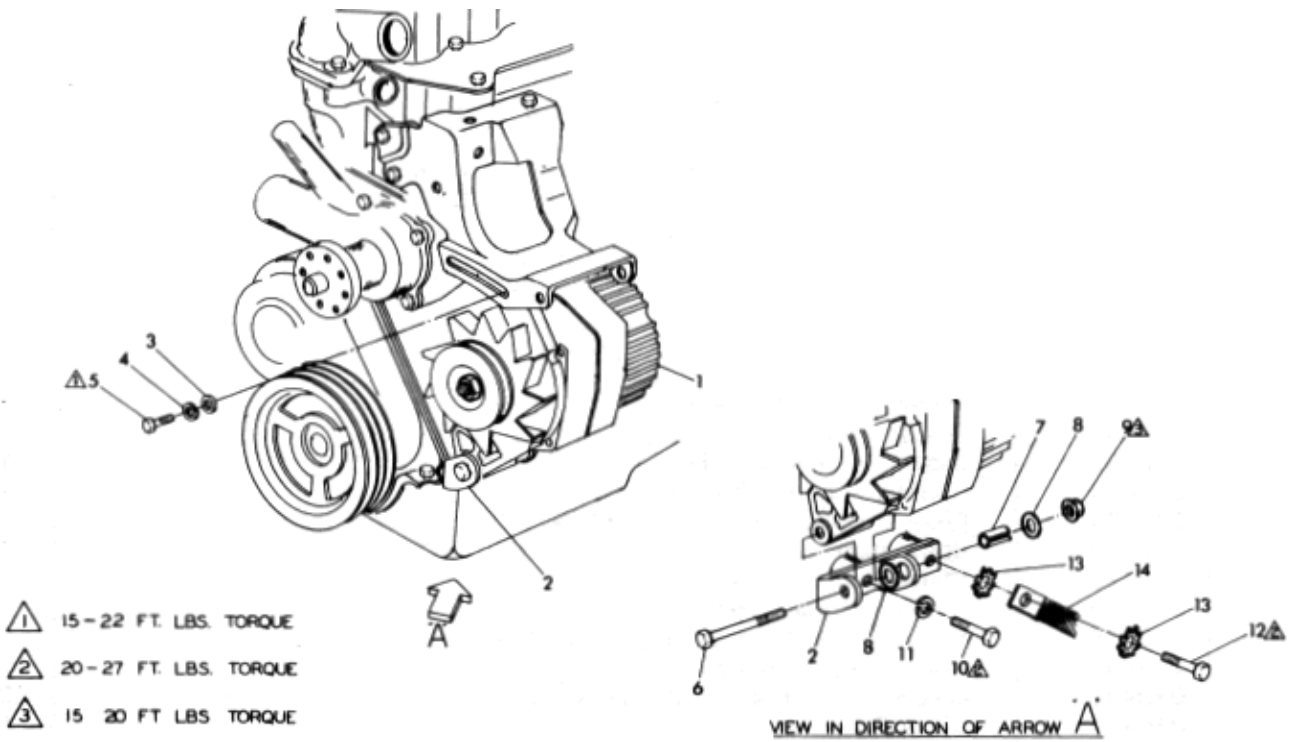


Figure 16-7 Generator Assembly Mounting, 6 Cylinder

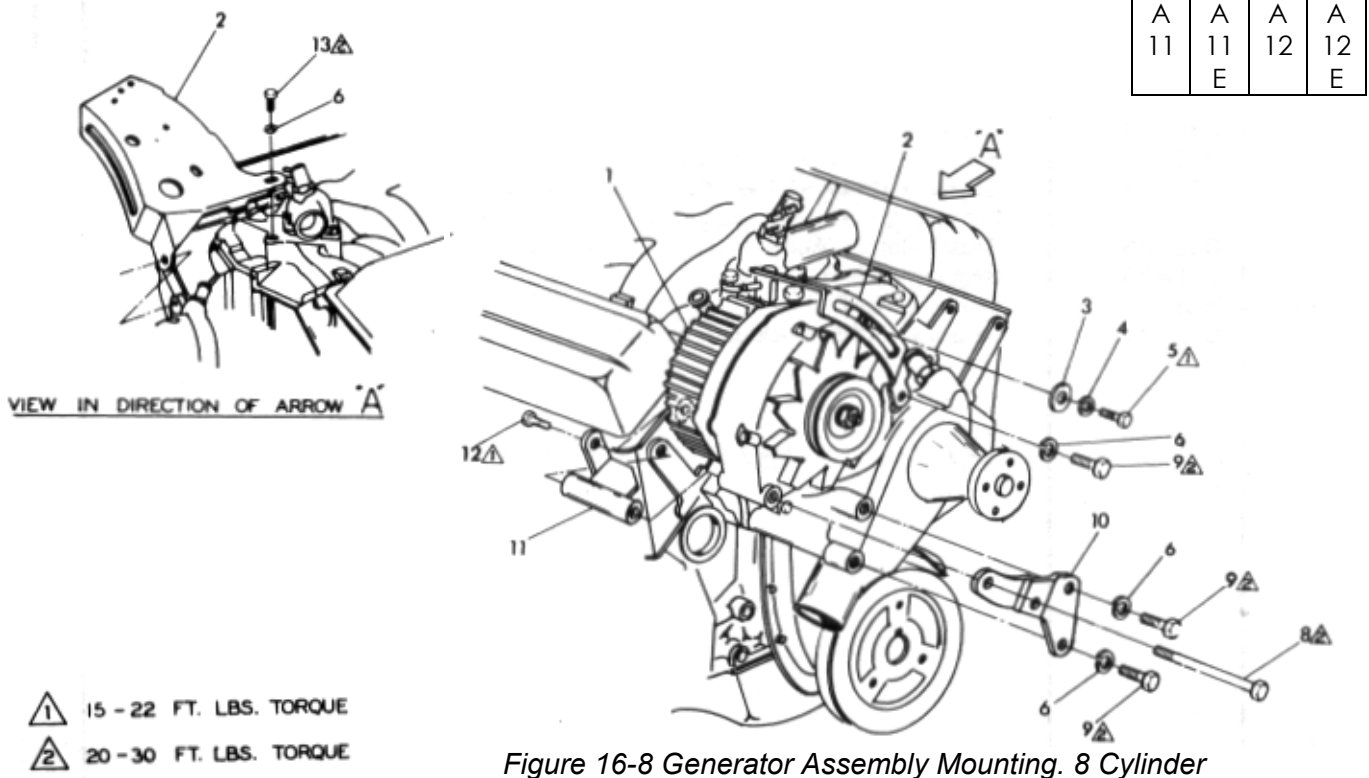


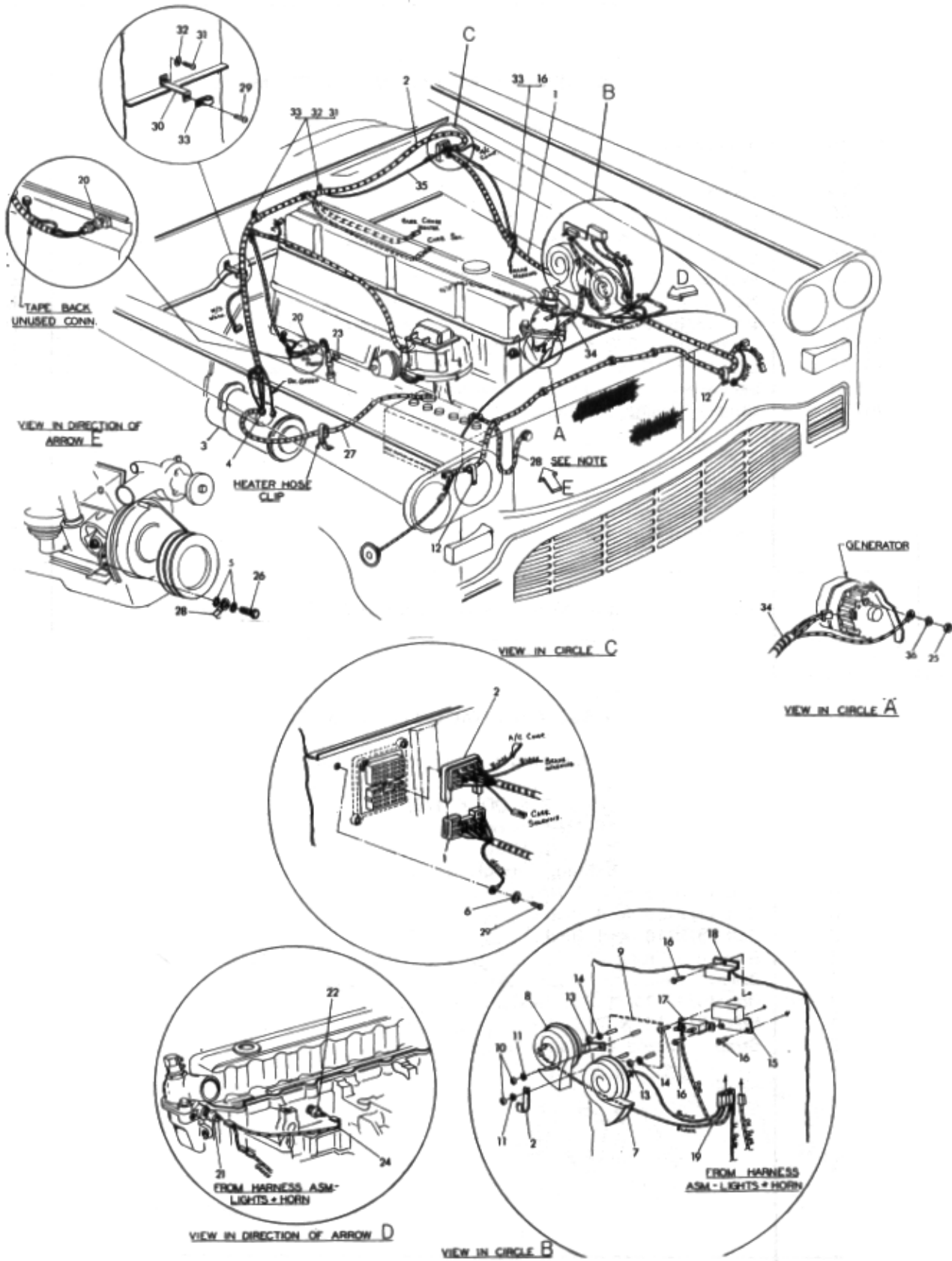
Figure 16-8 Generator Assembly Mounting, 8 Cylinder

GROUP 16 - ELECTRICAL CHASSIS 16-13

Item	Part Number	Description	Qty
Figure 16-7			
GENERATOR ASSEMBLY MOUNTING, 6 CYLINDER			
1	705275	Generator Asm. - 63 Amp Delcotrom - 6 Cylinder	1
2	705276	Bracket Asm	1
3	702262	Washer (13/32 ID X 3/4 OD X 1/8)	1
4	120214	Lockwasher (5/16 Med. Spring)	1
5	180080	Bolt (5/16-18 X 1 1/8 Hex)	1
6	456958	Bolt (3/8-16 X 4 Hex)	1
7	706360	Spacer - Mounting Bolt	1
8	120394	Washer (13/32 ID X 13/16 OD)	2
9	626779	Nut (3/8-16 Hex Special)	1
10	180122	Bolt (3/8-16 X 1 Hex)	1
11	120382	Lockwasher (3/8 Med. Spring)	1
12	180128	Bolt (3/8-16 X 1 3/4 Hex)	1
13	178551	Lockwasher (3/8 Int. Ext. Tooth)	2
14	706295	Strap - Engine to Frame Ground	1
Figure 16-8			
GENERATOR ASSEMBLY MOUNTING, 8 CYLINDER			
1	705566	Generator Asm. - 63 Amp Delcotron - 8 Cylinder	1
2	706855	Brace - Front	1
3	702262	Washer (13/32 ID X 3/4 OD X 1/8)	1
4	120214	Lockwasher (5/16 Med. Spring)	1
5	180080	Bolt (5/16-18 X 1 1/8 Hex)	1
6	120382	Lockwasher (3/8 Med. Spring)	4
7	180120	Bolt (3/8-16 X 3/4 Hex)	1
8	704550	Bolt (3/8-16 X 6 Hex)	1
9	180122	Bolt (3/8-16 X 1 Hex)	2
10	706496	Bracket - Front	1
11	706667	Brace - Rear	1
12	180077	Bolt (5/16-18 X 3/4 Hex)	1
13	180121	Bolt (3/8-16 X 7/8)	1
	706295	Strap - Engine to Frame Ground	1

GROUP 16 - ELECTRICAL CHASSIS 16-14

A		A	
11		12	



BATTERY CABLES INSTALL NOTE:
 A DISTANCE OF AT LEAST 6" MUST BE
 MAINTAINED BETWEEN CABLES AND DIST.

Figure 16-9 Wiring and Associated Parts. 6 Cylinder
 Checker Motors Corp.

GROUP 16 - ELECTRICAL CHASSIS 16-15

Item	Part Number	Description	Qty
Figure 16-9			
WIRING AND ASSOCIATED PARTS, 6 CYLINDER			
1	705732	Wiring Harness - Lights & Horn Relay	1
2	705984	Wiring Harness - Main Engine HEI	1
3	705969	Motor Asm. - Starting	1
4	706100	Nut (3/8-16 Hex Flanged)	1
5	180358	LW (3/8 Int. Ext. Tooth)	2
6	94751	LW (1/4 Dome Type Toothed)	1
7	705177	Horn & Bracket Asm. - High	1
8	705178	Horn & Bracket Asm. - Low	1
9	93962	Plate Asm. - Horn Mt	1
10	120376	Nut (5/16-18 Hex)	2
11	120214	LW (5/16 Med. Spring)	2
12	82144	Clip ("J" Type)	3
13	120377	Nut (3/8-16 Hex)	2
14	120382	LW (3/8 Med. Spring)	2
15	703557	Relay Asm. - Horn & Buzzer	1
16	161895	Screw (#10 X 1/2 PHCR)	6
17	705194	Circuit Breaker - 12V - 1 5A	1
18	706305	Guard - Horn Circuit Breaker	1
19	97574	Wiring Harness - Horn Relay	1
20	705881	Switch Asm. - Oil Pressure	1
21	705123	Switch Asm. - Eng. Temp. (in Thermo. Hsg.)	1
22	05904	Switch Asm. - Eng. Temp. (in Cyl. Head)	1
23	705709	Switch Asm. - Oil Temp. EFE	1
24	705430	Adapter Asm. - Dual Heat Sensor Wiring	1
25	121743	Nut (#12-24 Hex)	1
26	122104	Bolt (3/8-16 X 5/8 Hex)	1
27	701261	Cable Asm. - Battery to Sol	1
28	93892	Cable Asm. - Battery Ground	1
29	189129	Screw (1/4-20 X 5/8)	2
30	703730	Bracket Asm	1
31	9425830	Screw (1/4-14 X 5/8 THCR)	3
32	174916	LW (1/4 Int. Ext. Tooth)	3
33	702221	Clamp - Closed	4
34	705561	Harness Asm. - Gen	1
35	705175	Wire Asm. - Carb. Sol	1
36	120380	LW (1/4 Med. Spring)	1
	706295	Ground Strap - Engine to Frame	1
Section 16-10			
IGNITION WIRES - SPARK PLUGS, 6 CYLINDER			
	705985	Harness Asm. - HEI (Includes #3, 4, 5 & 6 Wires)	1
	705986	Cable Asm. (#1 & 2 Wires)	2
	708115	Shield - Distributor Splash	1
	05142	Spark Plug (AC R46TS)	6

GROUP 16 - ELECTRICAL CHASSIS 16-16

A	A	A	A
11	11	12	12
E	E	E	E

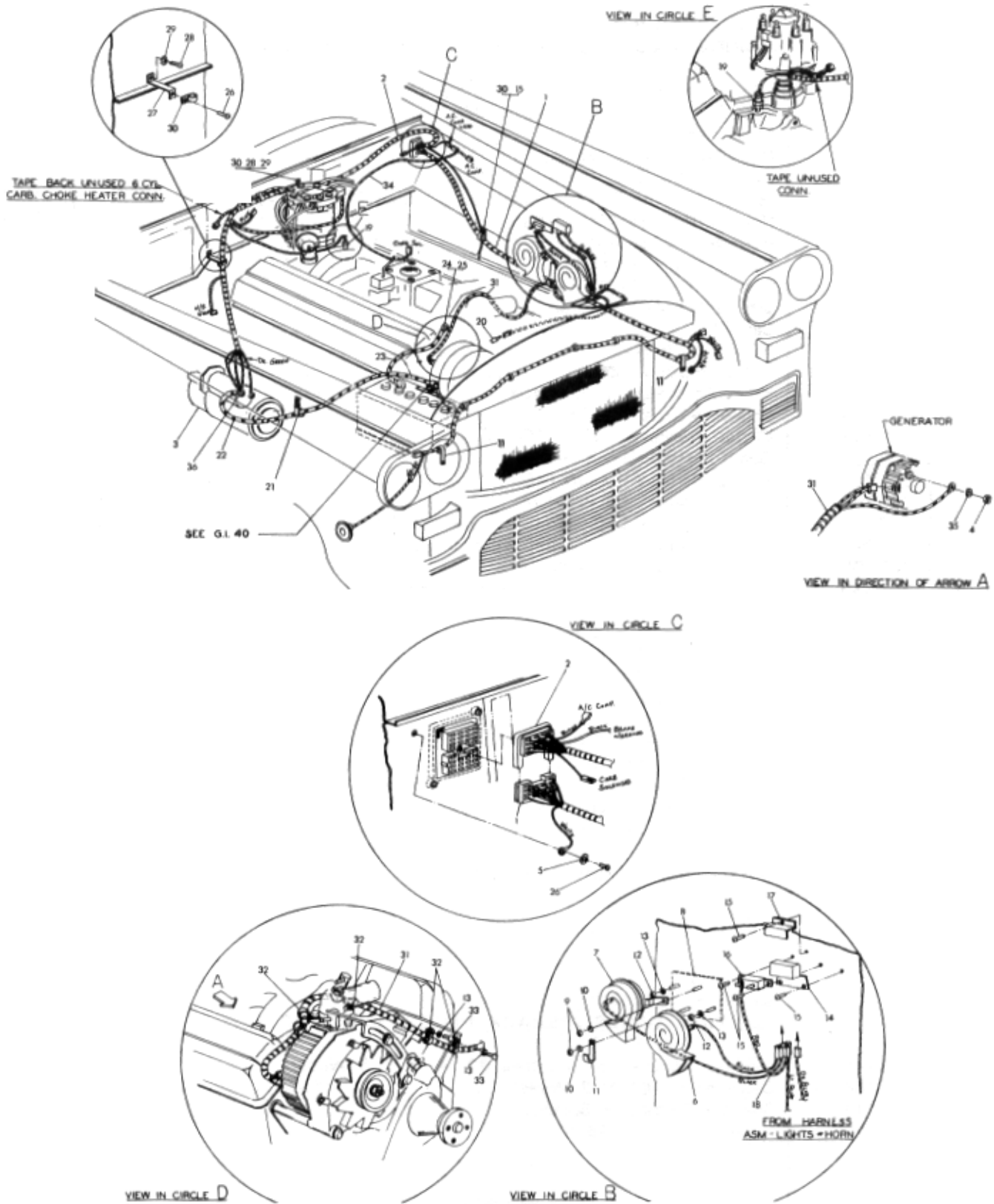


Figure 16-11 Wiring and Associated Parts, 8 Cylinder

Checker Motors Corp.

GROUP 16 - ELECTRICAL CHASSIS 16-17

Item	Part Number	Description	Qty
		Figure 1 6-1 1	
		WIRING AND ASSOCIATED PARTS. 8 CYLINDER	
1	705732	Wiring Harness - Lights & Horn Relay	1
2	705984	Wiring Harness - Main Eng. HEI	1
3	705970	Motor Asm. - Starting	1
4	121743	Nut (#12-24 Hex)	1
5	94751	LW (1/4 Dome Type Toothed)	1
6	705177	Horn & Bracket Asm. - High	1
7	705178	Horn & Bracket Asm. - Low	1
8	93962	Plate Asm. - Horn Mt	1
9	120376	Nut (5/16-18 Hex)	2
10	120214	LW (5/16 Med. Spring)	2
11	82144	Clip ("J" Type)	3
12	120377	Nut (3/8-16 Hex)	2
13	120382	LW (3/8 Med. Spring)	4
14	703557	Relay Asm. - Horn & Buzzer	1
15	161895	Screw (#10 X 1/2 PHCR)	6
16	705194	Circuit Breaker - 1 2V - 1 5A	1
17	706305	Guard - Horn Circuit Breaker	1
18	97574	Wiring Harness - Horn Relay	1
19	705572	Switch Asm. - Oil Pressure	1
20	705123	Switch Asm. - Eng. Temp	1
21	646664	Clip	1
22	705087	Cable Asm. - Front Mt. Bat. (Delco S/T) Positive	1
23	705088	Cable Asm. - Front Mt. Bat. (Delco S/T) Negative	1
24	122104	Bolt (3/8-16 X 5/8 Hex)	1
25	180358	LW (3/8 Int. Tooth)	2
26	189129	Screw (1/4-20 X 5/8)	2
27	703730	Bracket Asm	1
28	9425830	Screw (1/4-14 X 5/8 THCR)	2
29	174916	LW (1/4 Int. Ext. Tooth)	2
30	702221	Clamp - Closed	3
31	705562	Harness Asm. - Gen	1
32	704549	Clamp (13/16 Closed)	1
33	180120	Bolt (3/8-16 X 3/4 Hex)	2
34	705911	Wire Asm. - Carb. Sol. (W/ A/C)	1
35	120380	LW (1/4 Med. Spring)	1
36	706100	Nut (3/8-16 Hex Flanged)	1

Section 16-12

		IGNITION WIRES - SPARK PLUGS. 8 CYLINDER	
	705987	Harness Asm. - HEI	1
	706860	Support - Spark Plug Wire - Rear Lower RH	1
	706861	Support - Spark Plug Wire - Rear Lower LH	1
	706862	Grommet - Spark Plug Wire - Rear Lower	2
	120706	Bolt (1/4-20 X 1/2 Hex)	6
	120380	Lockwasher (1/4 Med. Spring)	6
	705854	Shield - Spark Plug - RH Front	1
	704117	Shield - Spark Plug - LH Front	1
	706856	Shield Asm. - Spark Plug RH Rear	1
	706857	Shield Asm. - Spark Plug LH Rear	1
	706859	Support- Spark Plug Wire Side	2
	706864	Retainer- Spark Plug Wire Side	2
	708117	Retainer- Spark Plug Wire	2
	708064	Clip - Spark Plug Wire to Oil Pan	1
	05143	Spark Plug (AC R45TS)	

GROUP 16 - ELECTRICAL CHASSIS 16-18

A		A	
11		12	

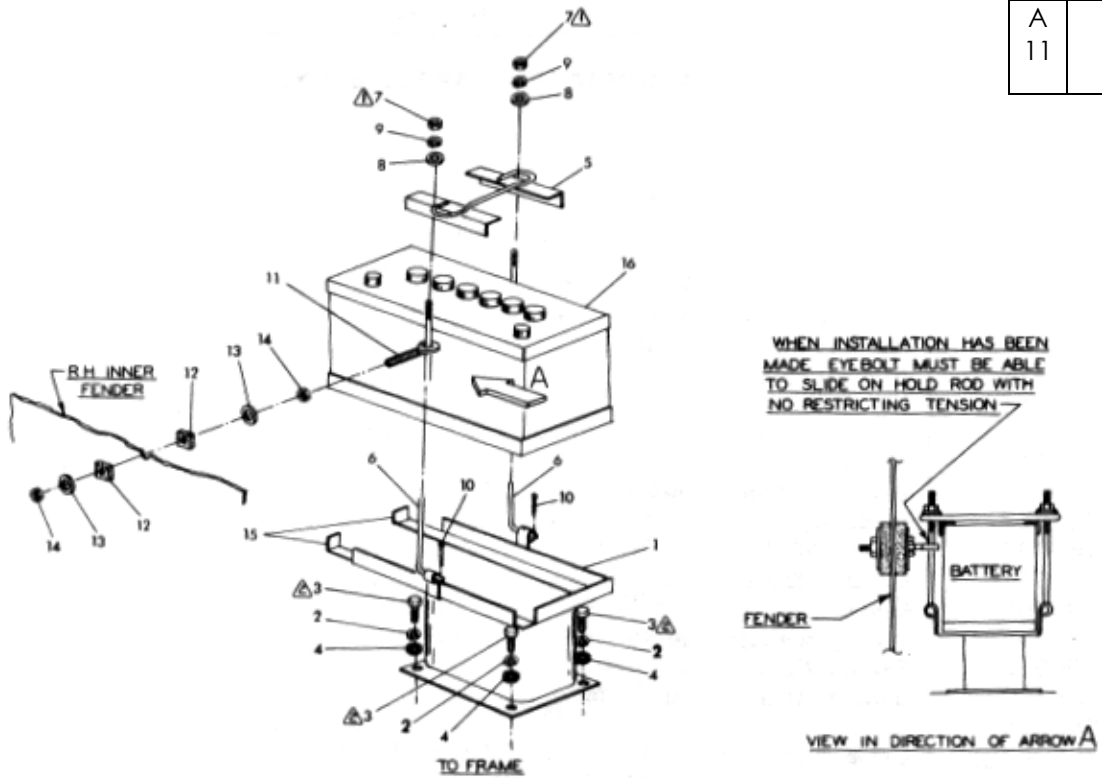


Figure 16-13 Battery Front Mounted, 6 Cylinder

A	A	A	A
11	11	12	12
	E		E

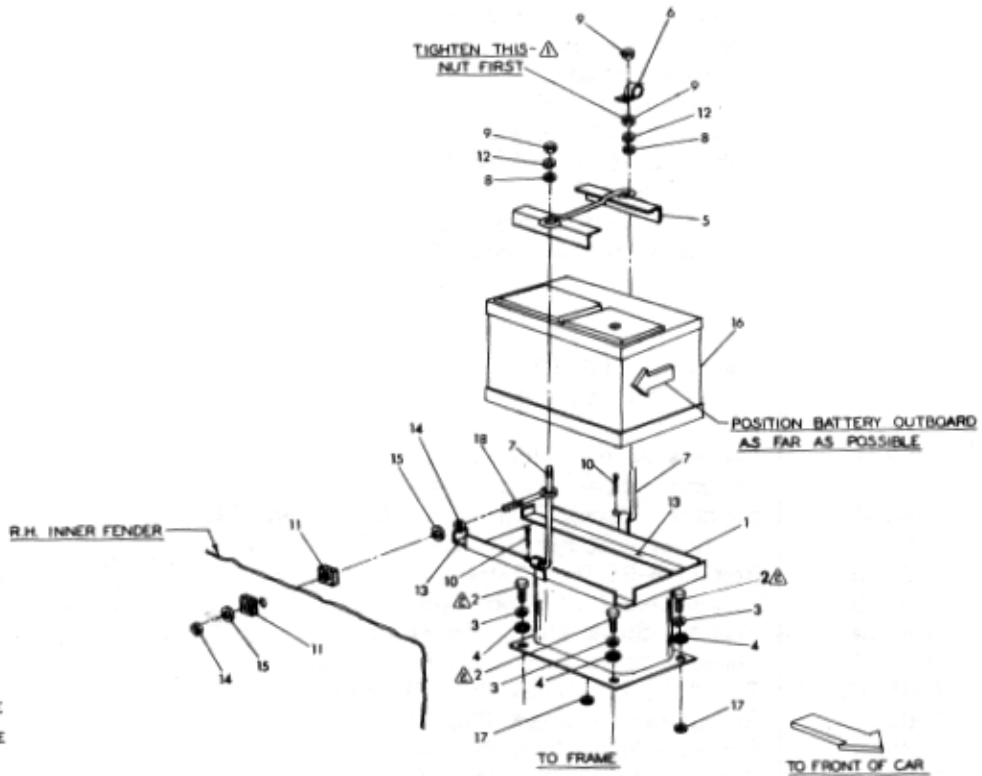


Figure 16-14 Battery Front Mounted, 8 Cylinder

Checker Motors Corp.

GROUP 16 - ELECTRICAL CHASSIS 16-19

Item	Part Number	Description	Qty
Figure 16-13			
		BATTERY - FRONT MOUNTED, 6 CYLINDER	
1	701104	Support Asm	1
2	120383	Lockwasher (7/16 Med. Spring)	4
3	181668	Bolt (7/16-20 X 1 1/4)	4
4	120388	Washer (7/16 ID X 1 OD)	4
5	707078	Hold Down	1
6	94489	Rod	2
7	120368	Nut (5/16-24 Hex)	2
8	446363	Washer (3/8 ID X 7/8 OD)	2
9	120214	Lockwasher (5/16 Med. Spring)	2
10	121222	Cotter Pin (3/32 X 3/4)	2
11	70196	Bolt - Eye	1
12	640597	Shim	2
13	446477	Washer (7/16 ID X 1 3/8 OD)	2
14	120376	Nut (5/16-18 Hex)	2
15	94555	Cleat	2
16	705829	Battery - 1 2V - 90 Amp Maintenance Free	1
Figure 16-14			
		BATTERY - FRONT MOUNTED. 8 CYLINDER	
1	701104	Support Asm. - Battery Complete	1
2	181668	Bolt (7/16-20 X 1 1/4 Hex)	4
3	120383	LW (7/16 Med. Spring)	4
4	120388	Washer (7/16 ID X 1 OD)	4
5	707078	Hold Down Asm. - Battery	1
6	702221	Clamp (13/16 Closed 11/32 Bolt Hole)	1
7	94489	Rod - Battery Hold Down	2
8	446363	Washer (3/8 ID X 7/8 OD)	2
9	120368	Nut (5/16-24 Hex)	3
10	121222	Cotter Pin (3/32 X 3/4)	2
11	640597	Shim	1
12	120214	LW (5/16 Med. Spring)	2
13	706238	Cleat - Battery Tray	2
14	120376	Nut (5/16-18 Hex)	1
15	446477	Washer (7/16 ID X 1 3/8 OD)	2
16	707076	Battery - Delco Maintenance Free Freedom	1
17	706237	Spacer	2
18	70196	Bolt - Eye	1

GROUP 16 - ELECTRICAL CHASSIS 16-20

A		A	
11		12	

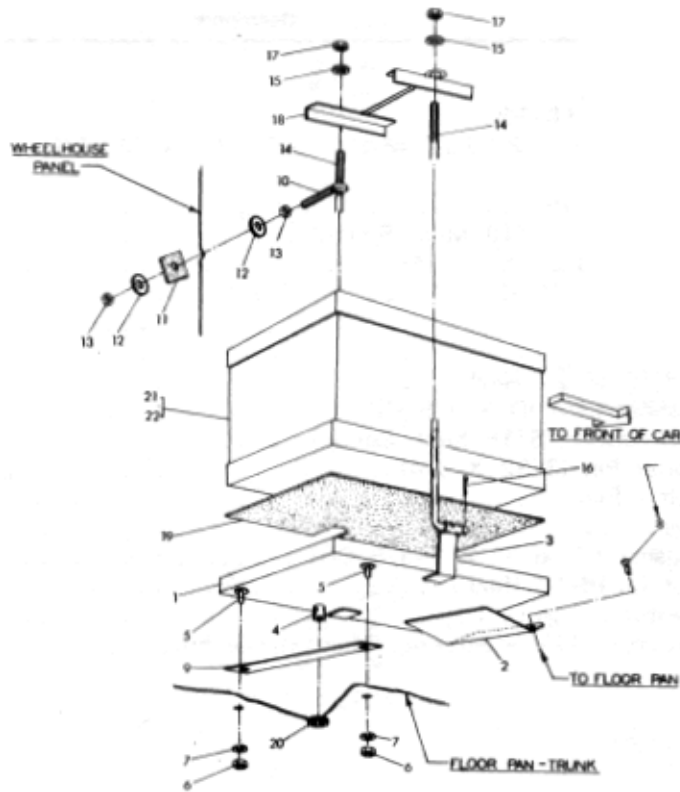


Figure 16-15 Battery Installation. Rear Mounted. 6 & 8 Cylinder

A		A	
11		12	

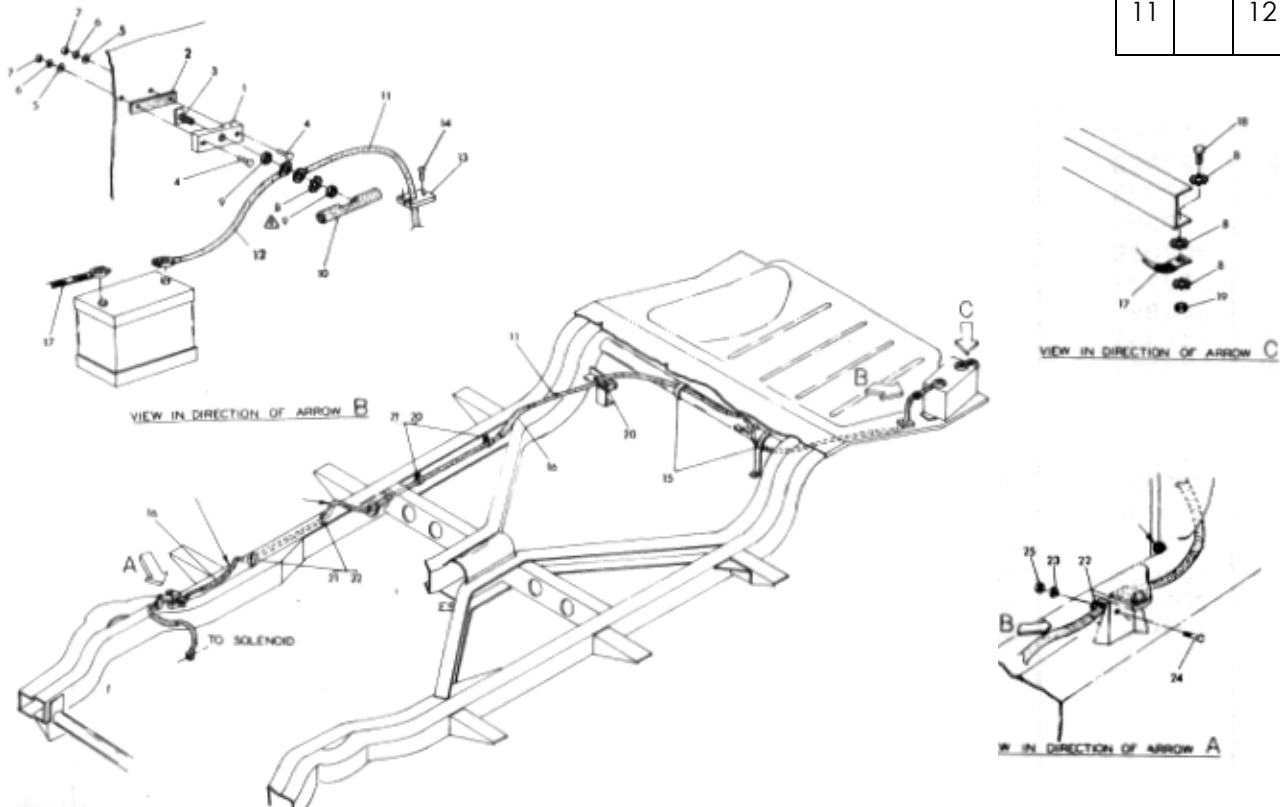


Figure 16-16 Split Cable Installation. Rear Mounted Battery

GROUP 16 - ELECTRICAL CHASSIS 16-21

Item	Part Number	Description	Qty
Figure 16-15			
BATTERY INSTALLATION. REAR MOUNTED. 6 & 8 CYLINDER			
	95283	Tray Asm	1
1	94714	Tray	1
2	94715	Plate	1
3	94488	Strap	2
4	94721	Tube	1
5	626169	Bolt (5/16-18 X 3/4)	2
6	120376	Nut (5/16-18 Hex)	2
7	120214	Lockwasher (5/16 Med. Spring)	2
8	9425830	Screw (1/4-14 X 5/8 THCR)	2
9	94716	Strip	1
10	70196	Bolt	1
11	640597	Shim	1
12	446477	Washer (7/16 ID X 1 3/8 OD)	2
13	120376	Nut (5/16-18 Hex)	2
14	94489	Rod	2
15	446363	Washer (3/8 ID X 7/8 CD)	2
16	121222	Cotter Pin (3/32 X 3/4)	2
17	120368	Nut (5/16-24 Hex)	2
18	707078	Hold Down	1
19	94722	Pad	1
20	702324	Grommet	1
21	705829	Battery - 1 2V - 90 Amp Maintenance Free	1
Figure 16-16			
SPLIT CABLE INSTALLATION. REAR MOUNTED BATTERY			
1	702834	Block	1
2	702837	Spacer - Block	1
3	701698	Bolt Asm	1
4	123461	Bolt (1/4-28 X 1 Hex)	2
5	120392	Washer (9/32 ID X 5/8 CD)	2
6	120380	LW (1/4 Med. Spring)	2
7	120367	Nut (1/4-28 Hex)	2
8	178551	LW (3/8 Int. Ext. Tooth)	4
9	120377	Nut (3/8-16 Hex)	2
10	702836	Boot - Battery Cable Junction	1
11	701699	Cable Asm. - Solenoid Switch to Junction Block	1
12	701700	Cable Asm. - Junction Block to Battery	1
13	94719	Insulator - Battery Cable Floor	1
14	162009	Screw (#12 X 3/4 Pan Hd.)	3
15	80345	Clamp Asm	2
16	636909	Loom (10" Long)	2
17	95278	Strap Asm. - Battery Ground	1
18	181637	Bolt (3/8-24 X 1 Hex)	1
19	120369	Nut (3/8-24 Hex)	1
20	702221	Clamp (13/16 Closed)	3
21	626912	Screw (5/16-18 X 3/4 Hex)	4
22	626532	Clip (15/16 Double)	3
23	120214	LW (5/16 Med. Spring)	1
24	181595	Bolt (5/16-24 X 3/4 Hex)	1
25	120368	Nut (5/16-24 Hex)	1

GROUP 16 - ELECTRICAL CHASSIS 16-22

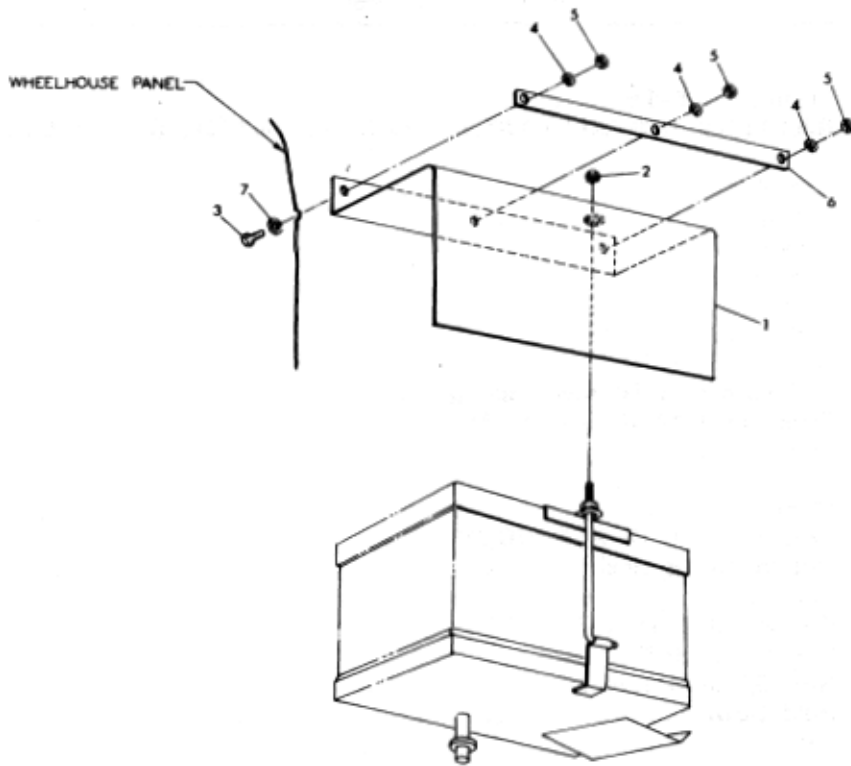


Figure 16-17 Shield Assembly .Rear Mounted Battery, 6 & 8 Cylinder .120 WB

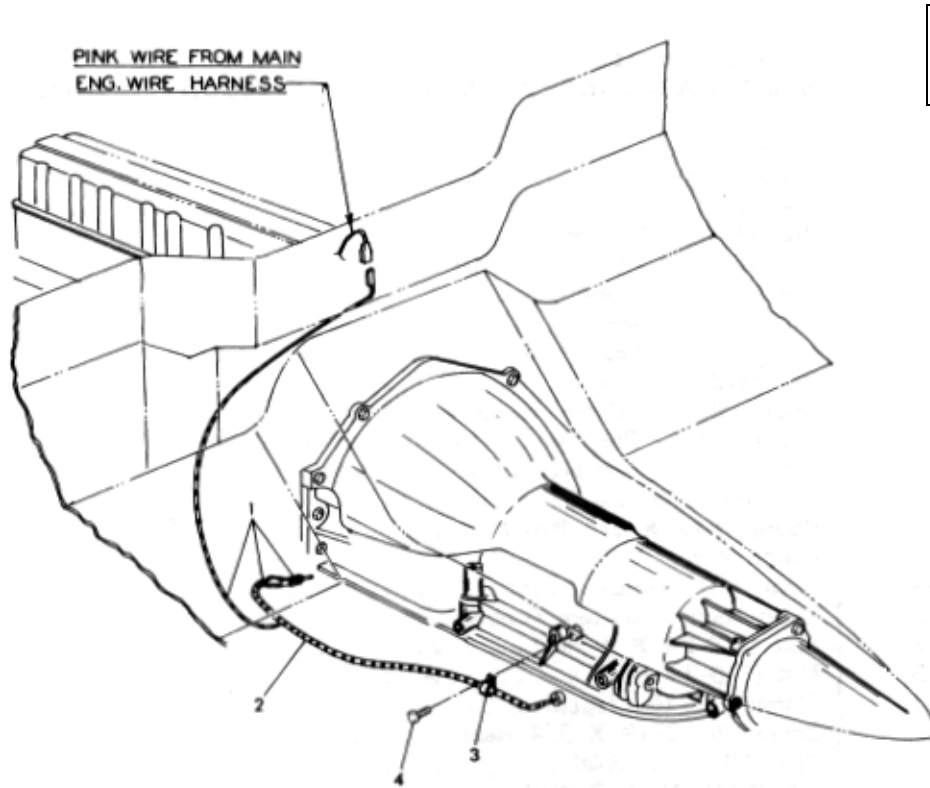


Figure 16-18 Kickdown Switch and Wiring Installation. 6 & 8 Cylinder

GROUP 16 - ELECTRICAL CHASSIS 16-23

Item	Part Number	Description	Qty
Figure 16-17			
SHIELD ASSEMBLY - REAR MOUNTED BATTERY. 6 & 8 CYLINDER - 120 WB			
1	97368	Cover Asm	1
2	131501	Nut (5/16-24 Low Crown)	1
3	120854	Bolt (1/4-20 X 5/8 Hex)	3
4	120380	Lockwasher (1/4 Med. Spring)	3
5	120375	Nut (1/4-20 Hex)	3
6	98066	Strip	1
7	626930	Washer & Sealer Asm. (5/8 CD)	3
Figure 16-18			
KICKDOWN SWITCH AND WIRING INSTALLATION. 6 & 8 CYLINDER			
	705517	Switch & Insulator Asm. - Kickdown	1
1	705516	Switch Asm. - Kickdown	1
2	704804	Insulator - Wire Protector	1
3	626858	Clip - Nylon (3/8 Wide)	1
4	274105	Screw (#10-24 X 3/8 Hex)	1