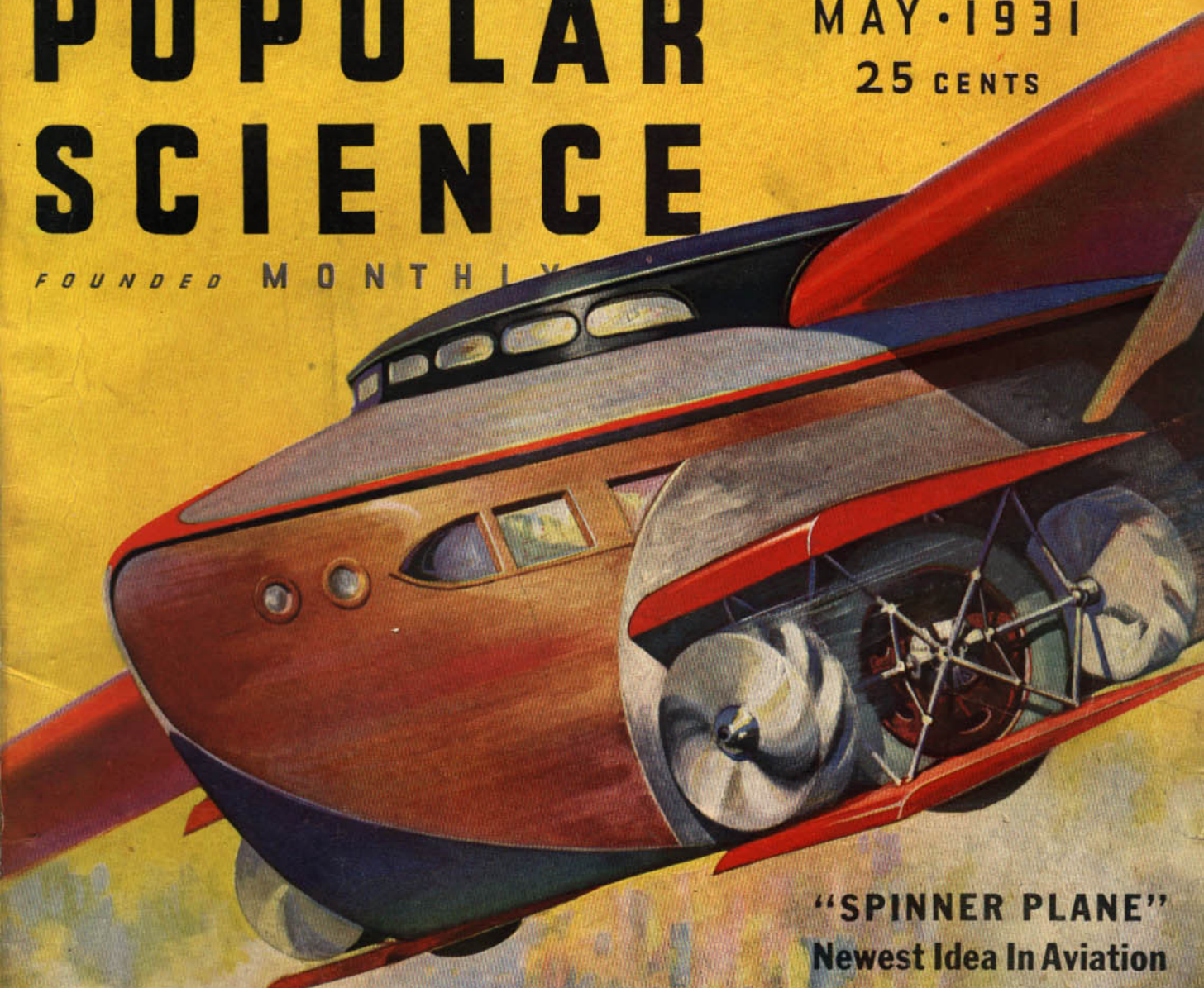


POPULAR SCIENCE

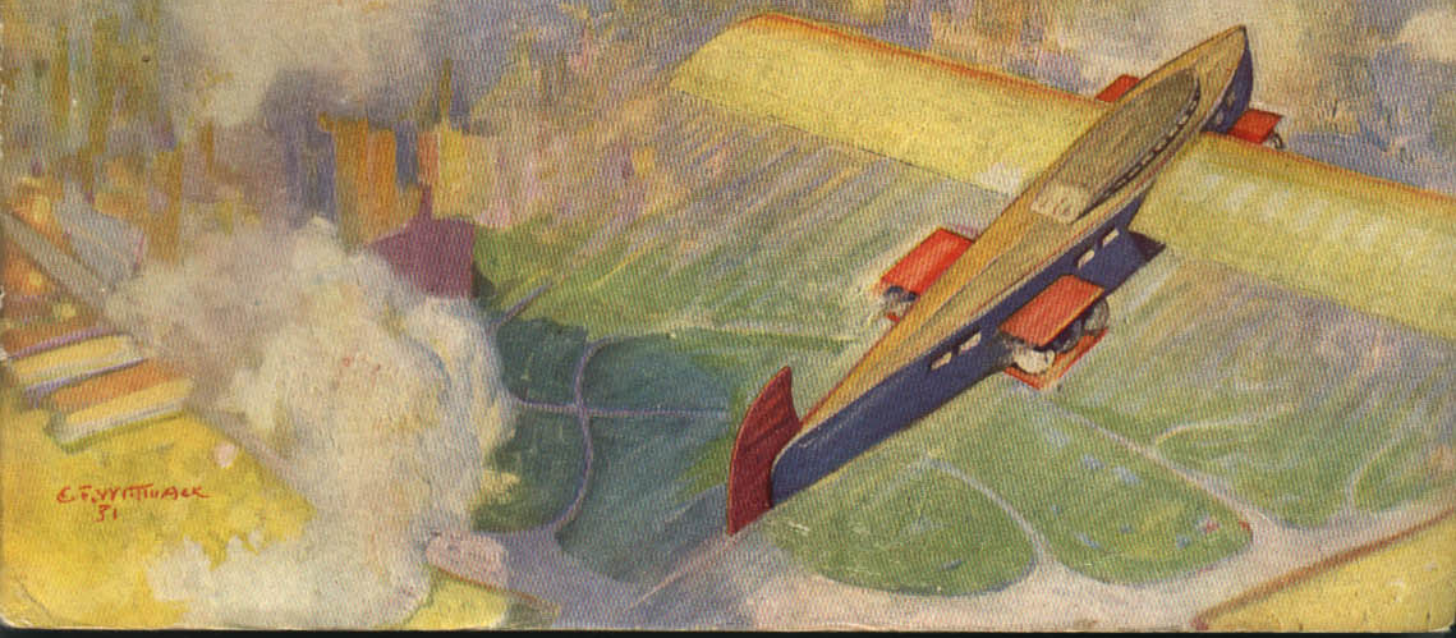
FOUNDED MONTHLY

MAY • 1931

25 CENTS



"SPINNER PLANE"
Newest Idea In Aviation
PAGE 28

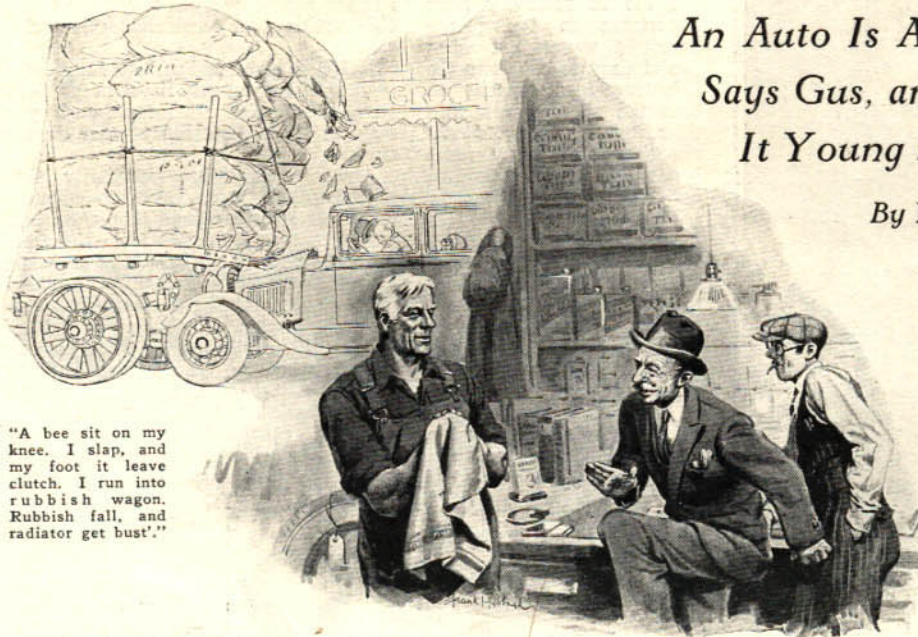


E. F. WYATT
31

Should Law Scrap Old Cars?

*An Auto Is As Old As It Acts,
Says Gus, and You Can Keep
It Young by Proper Repairs*

By MARTIN BUNN



"A bee sit on my knee. I slap, and my foot it leave clutch. I run into rubbish wagon. Rubbish fall, and radiator get bust'."

GUS WILSON, half owner of the Model Garage, had about decided to call it a day when his partner Joe Clark called him to the window.

"What's the idea of the funny decorations?" Joe asked, pointing to a small sedan that was coming slowly down the road. The car certainly looked queer. Scraps of paper and strings of various colors fluttered in the breeze, a sheet of brown paper was wrapped around the front axle, and the remains of a burlap bag dragged from the rear bumper.

Gus gazed at it wonderingly, but before he had time to make a reply the car swung in and came to a bucking halt in front of the garage. Immediately there came a loud hissing sound, clouds of steam poured out of the openings in the hood, and a torrent of steaming water rained down and formed a pool under the motor.

The two garage men came out in time to see the owner pop out of the car and shake his fist at the offending radiator.

"*Sacre!*" he yelled. "After all these mile' I have driven you, little pig, you try to push the van full of the rubbish from the road—and see what happen! Jules Marceau, he punish you!" And he backed up his threat with a vigorous kick administered to the unoffending front tire.

Gus calmed the excited little man and led him into the office. "Tell us what happened, Mr. Marceau," he suggested.

"Perhaps it is a little bit my fault," Marceau began, his wrath rapidly evaporating. "I take Marie to the shops this afternoon and I wait for the traffic light behind a grand big truck filled with bags of the rubbish. A bee jump through the window and he sit on my knee. I slap, and my foot it leave—how you call, the clutch—and my car it jump right into the rubbish wagon. The rubbish it come down all over me and the radiator get

bust'. Is it not what you call bad luck?"

Gus grinned. "Bad luck and poor management," he observed. "If you hadn't had the car in gear, you could have taken a poke at the bee without having your car jump ahead.

"Of course, lots of drivers put the gears in first speed when they stop in traffic and keep their feet on the clutch pedals waiting for the signal to go ahead. But you shouldn't do that. Anything that happens to make you move suddenly—like the bee that landed on your knee, or maybe a hot cigar ash falling on your hand or even a little cramp in your leg muscle—is going to make you take your foot off the clutch pedal and slam into whatever is ahead of you. You're lucky you weren't at the head of the line with a lot of people walking across the street a foot or two from your bumper. You might have killed somebody.

"Besides," he continued, "you're putting a lot of extra work on the clutch throwout bearing when you stand in first gear with the clutch pedal down."

"But I do not stand in the first gear,"

Gus Says:

AN AUTOMOBILE wears out in two ways—there's the wear on the mechanical parts and the wear on the body, upholstery, and paint. Age means nothing to the mechanical parts; mileage wears out the motor and running gear. Age means more than mileage to the body, so if you expect to keep a car for several years and not drive it very much, it pays to put some extra dollars into a better body.

Marceau protested. "I am such a good driver I do not need the first speed. Me, always I start in the middle speed."

"Humph!" the veteran auto mechanic grunted. "If you start in second all the time, I'll bet your clutch lining is pretty near worn out already. Starting in second is bum dope unless you have a four-speed transmission with first geared so low that it isn't any use. Let's take a look at that car."

They pushed it inside and Gus investigated the extent of the damage.

"Not so bad," he said. "For a wonder the radiator isn't damaged. I'll fix the supports and put on a new hose connection and it'll be all right except for that dent in the hood. I'll roll that out, too, if you'll bring it in tomorrow."

As with every car that came into the place, Gus inspected it to see if any vital part was out of order. He poked at the brake pedal, thumbed the horn button, fingered a broken spot in the windshield wiper hose, and squinted at the wheel alignment.

"Looks to me like you had a few other little jobs here, Mr. Marceau," he said. "The brakes need taking up, the horn doesn't work, and the windshield wiper is out of commission."

"*Poof!*" exclaimed Marceau waving his fingers expressively. "The brakes you should fix, yes, but these other little things are as nothing. I do not like the sound of the horn and never do I drive in the rain."

"Maybe so," Gus growled. "But if you ever meet an inspector he'll think different. Blowing a horn all the time is silly business, but there's times when the horn may save some child's life or your own. As for the windshield wiper, you must be some weather prophet if you can be sure you're never going to be caught in a driving rainstorm at night!"

"I have not think of it so," said Marceau. "It is the one time in the thousand that the noise maker is necessary. That is true! Fix it at once! Never will I take the chance again. And the scrubber of the windshield also."

"That's the way to talk," said Gus with a smile. "With all the cars that are around today, everybody's got to keep his machine right or pretty soon there'll be a lot of new inspectors on the road just looking for (Continued on page 128)

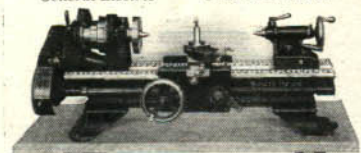
New Model South Bend Lathes

BACK-GEARED, SCREW CUTTING, PRECISION

96 Sizes and Types

SOUTH BEND LATHES are made in sizes 9" to 24" swing with 3' to 12' bed lengths and may be had with countershaft or motor drive, in bench, floor leg, tool room, and gap bed types. Easy payments, if desired — a small payment down and the balance in 12 monthly payments.

A few prominent users:
 Westinghouse General Motors
 Western Electric Studebaker
 General Electric U. S. Government



9' x 3' Junior Back-Geared, Screw Cutting, Precision Lathe, also made in 3 1/2' and 4' bed lengths.
 Complete with Countershaft and Reversing Motor. **\$169**
 Equipment, Weight, 375 lbs. Price
 Payments: \$33.80 Down, Balance \$11.83 a Month for 12 Months.



18' x 8' Motor Driven Quick Change, Back-Geared, Screw Cutting, Precision Lathe, furnished in 6', 7', 10', 12' and 14' bed lengths.
 Complete with Reversing Motor, Reversing Switch and Regular Lathe Equipment. Weight, 3,240 pounds. **\$997**

WRITE FOR THESE BOOKS

"HOW TO RUN A LATHE" 25c postpaid
 Contains 160 pages, more than 300 illustrations. Shows how to handle 400 different types of lathe jobs as practiced in the modern machine shop. Sent postpaid for only 25 cents; coin or stamps of any country accepted.

AUTO MECHANICS' SERVICE BOOK No. 66 25c postpaid
 This 96 page book, with 200 illustrations, describes correct and most practical way to do 60 automobile service jobs that come to the shop.

CATALOG No. 91-A—FREE
 This 104 page book illustrates, describes and prices the 96 different sizes and types of New Model South Bend Lathes. Send the Coupon now for your copy, free.

SOUTH BEND LATHE WORKS

846 E. Madison St., South Bend, Ind., U.S.A.
 Lathe Builders for 24 Years — 50,000 in Use

SOUTH BEND LATHE WORKS
 846 E. Madison St., South Bend, Indiana, U.S.A.
 Gentlemen: Please send me books checked
 "How to Run a Lathe" (25c)
 Auto Mechanics' Service Book (25c)
 Catalog No. 91-A (Free)
 Name _____
 Address _____
 City _____ State _____

SHOULD LAW SCRAP OLD CARS?

(Continued from page 84.)

defects like that. A little while ago they stopped a lot of cars in another state and nearly a quarter of 'em had bum lights that couldn't pass inspection."

"Inspect mine, please," Marceau suggested, and grinned with pleasure when Gus found them in good shape.

"YOU see it's this way, Mr. Marceau," Gus went on as he set about adjusting the car. "Today the roads are jammed with cars. You'll meet hundreds on a trip for every ten you met a few years ago. And everywhere the speed laws have been made more reasonable so all cars travel lots faster now than they used to. I can remember only a few years back when you got pinched on our boulevard if you went over twenty miles an hour. Now if you don't move along at thirty when traffic is heavy you're likely to get a ticket for obstructing the road! Cars are getting more powerful. Weights are not going down. To balance that we've got four-wheel brakes and big tires that get a good grip on the road. The higher speeds of today really are safer than the slower speeds of yesterday, if—and that's a great big if—everything about the car is working as it should.

"There's a lot of talk right now about condemning all cars over a certain age and putting them off the road. We may come to that in the end, but it always seemed to me like a kind of a silly way to look at it. Maybe the people who keep proposing it will get the straight of it after a while. It isn't the age of a car that makes it safe or not. What counts is its condition. A five-year-old car in perfect shape is a lot safer bet than one two months old with the brakes out of whack and a lot of other things the matter with it," Gus concluded as he finished the brakes and started on the next job.

"Aha, my little cabbage!" whispered Marceau, patting the crumpled mudguard of his car affectionately. "Me, I will make very sure they do not condemn you, little one. Beginning with the now we will have your ills fixed at once, or before that, even!"

COUNTERFEITING KNOWN TO ROMAN CROOKS

RECENT excavations among Roman ruins in Trier, Germany, add another bit of evidence to prove that counterfeiting is not a crime confined to modern civilization. A number of molds were dug up, several with coins still in them. Analysis of the metal in these showed them to be not of silver, but of bronze, containing a mixture of lead.

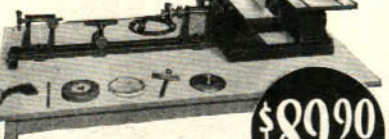
The molds were found in an obscure corner of the city, further proving them to be spurious, for legitimate makers of money always worked near the central parts of towns. Roman counterfeiters must have found it more profitable to ply their trade far out in the provinces, for among the several discoveries of counterfeiting establishments dating from the days of the Roman Empire, none have ever been unearthed in Italy.

WALKING STICK LIGHTS AS END HITS GROUND

A BRITISH innovation in walking sticks, recently exhibited in London, is an "illuminated cane." Each time the stick is touched to the ground, a small flashlight bulb in its head blinks on and off. Pedestrians who walk along country roads, late at night, thus may warn passing automobilists.

PRODUCTO

Electric Work Shop Combination



\$89.90

A new and sturdier machine for the home shop. Heavy cast iron base, 6" x 36" lathe, 4" planer, 8" circular saw. Priced complete with motor. Send today for descriptive circular.

Note: Complete catalog of larger Parks machines will also be sent on request.

THE PARKS WOODWORKING MACHINE CO.
 Dept. PS-5, 1525 Knowlton St., Cincinnati, Ohio
 Good woodworking machines since 1887.
 Canadian Factory: 338 Notre Dame East, Montreal.



FANCY WOODS

We have in stock 50 kinds of hard and soft fancy woods for Inlaying, Models and Scroll work. Send 4c postage for List No. P. S. We also have an illustrated Catalogue describing our designs for Scroll Work, 35 cents.
H. L. WILD, 510 East 11 Street
 Phone Algonquin 4-6056, New York City

SHIP MODEL FITTINGS

For model Yachts we make mastsockets, mast bands, boom bands, rudders, goose-necks, adjustable mast stop, automatic steering gear, brass and aluminum turn-buckles.
 We manufacture the largest and most complete line of model fittings for yachts, sailing ships, steamships and naval vessels, in the United States.
 A specialist of fittings for Destroyer "Preston" will be found in our catalog. Our illustrated catalog No. 7 will be mailed on receipt of 10c.
A. J. FISHER
 1002 Etowah Ave. Dept. S. Royal Oak, Mich.

BURN YOUR NAME ON TOOLS WITH THE ARKOGRAF
 Protect Your Tools From Theft. Write with electricity any name or design on the handle and finest tools and instruments, or any metal, like writing on paper with pen or pencil. Complete outfit \$3.50 Prepaid Anywhere. Interesting illustrated circular free. Write today. Agents wanted.
ARKOGRAF
 1171-A East Stark St., Portland, Oregon

SEND FOR FREE RADIO CATALOG LOWEST PRICES
COAST TO COAST RADIO CORPORATION
 ALL RADIO REPLACEMENT PARTS
 HEADQUARTERS
 142 D LIBERTY ST., NEW YORK

MODEL SHIPS

We can supply construction sets and all sorts of parts such as unfinished hulls, blocks, deadeyes, special flags, anchors, steering wheels, capstans, figureheads, blue prints, books, etc. For building real fine scale models of the Destroyer Preston, Baltimore Clipper, Flying Cloud, Constitution, Spanish Galleon, Mississippi River Steamboat, Sovereign of the Seas, Buzeose, Mayflower and many others. Also special construction sets for racing sail boats, power boats, model steam engines, propellers, etc., and fine tools for the model maker. Our large 32-page photographic illustrated booklet contains valuable information and hints for building ship models in addition to prices and full description of the above articles. Many people only slightly interested in models have become greatly enthused upon receiving this booklet. A copy will be sent postpaid upon receipt of 15 cts. (coin preferred).
Model Ship Supply Co., Dept. N, Mineola, N. Y.

A definite program for getting ahead financially will be found on page four of this issue.