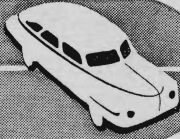
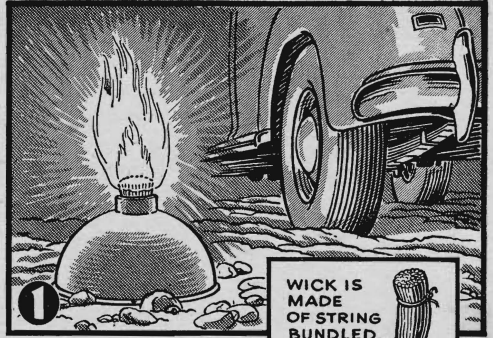


AUTO HINTS

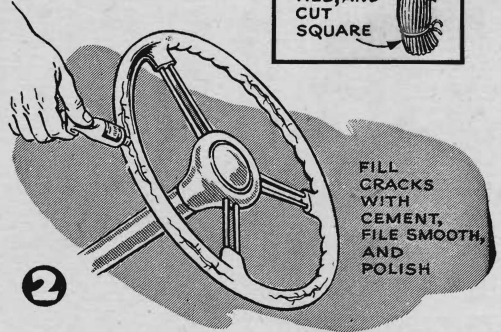


1. THIS ROADSIDE FLARE, a good warning light for nighttime highway stops, is made from the bottom of an old oilcan. The wick is cotton wrapping cord tied into a bundle of the diameter of the hole and cut square at both ends. Kerosene is good fuel. A bottle cap covers the wick when the flare is not in use.—H. K.



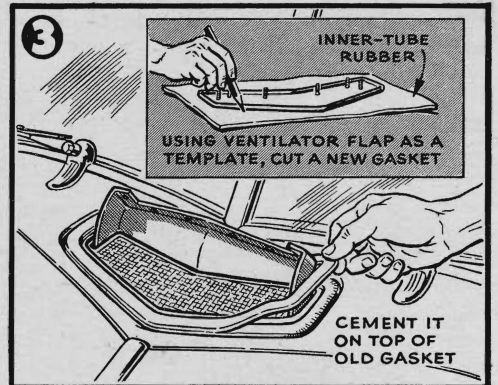
WICK IS MADE OF STRING BUNDLED, TIED, AND CUT SQUARE

2. STEERING-WHEEL CRACKS can be filled with clear cellulose cement so they won't be noticed. Scrape out and clean the cracks in the plastic and force in the cement in one or more applications. File and polish when dry.—W. A. W.



FILL CRACKS WITH CEMENT, FILE SMOOTH, AND POLISH

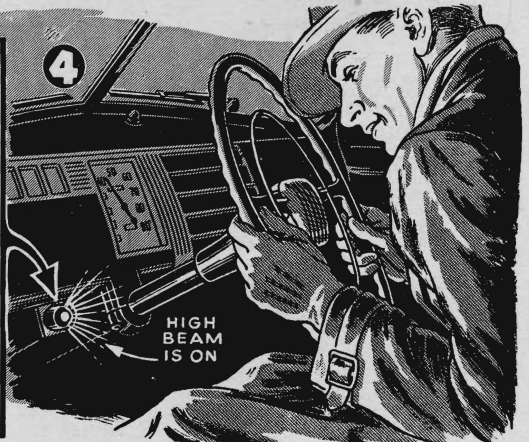
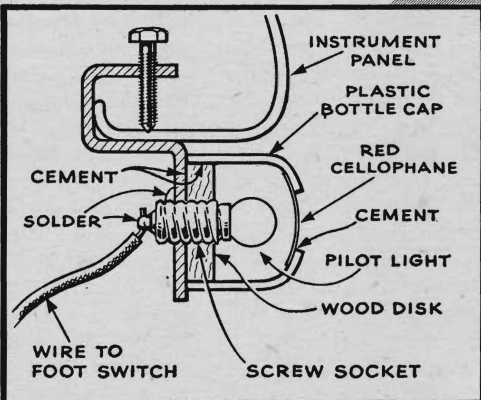
3. LEAKS IN A VENTILATOR are best repaired with a new gasket, which can be cut from an old inner tube. Remove the ventilator flap, trace and cut a $\frac{1}{2}$ " gasket, and cement it to the old rubber. Replace the flap, put some wax on the new gasket, and close the flap to provide pressure.—D. Z.



INNER-TUBE RUBBER
USING VENTILATOR FLAP AS A TEMPLATE, CUT A NEW GASKET

CEMENT IT ON TOP OF OLD GASKET

4. WIRING A HEADLIGHT INDICATOR on the dashboard is simply a matter of carrying a wire from it to the high-beam terminal on the foot switch. A pilot-light fixture may be purchased or made up from a steel clamp, machine screw, wood disk, socket, and a plastic bottle cap.—A. W. C.



4

HIGH BEAM IS ON

Drawings by STEWART ROUSE